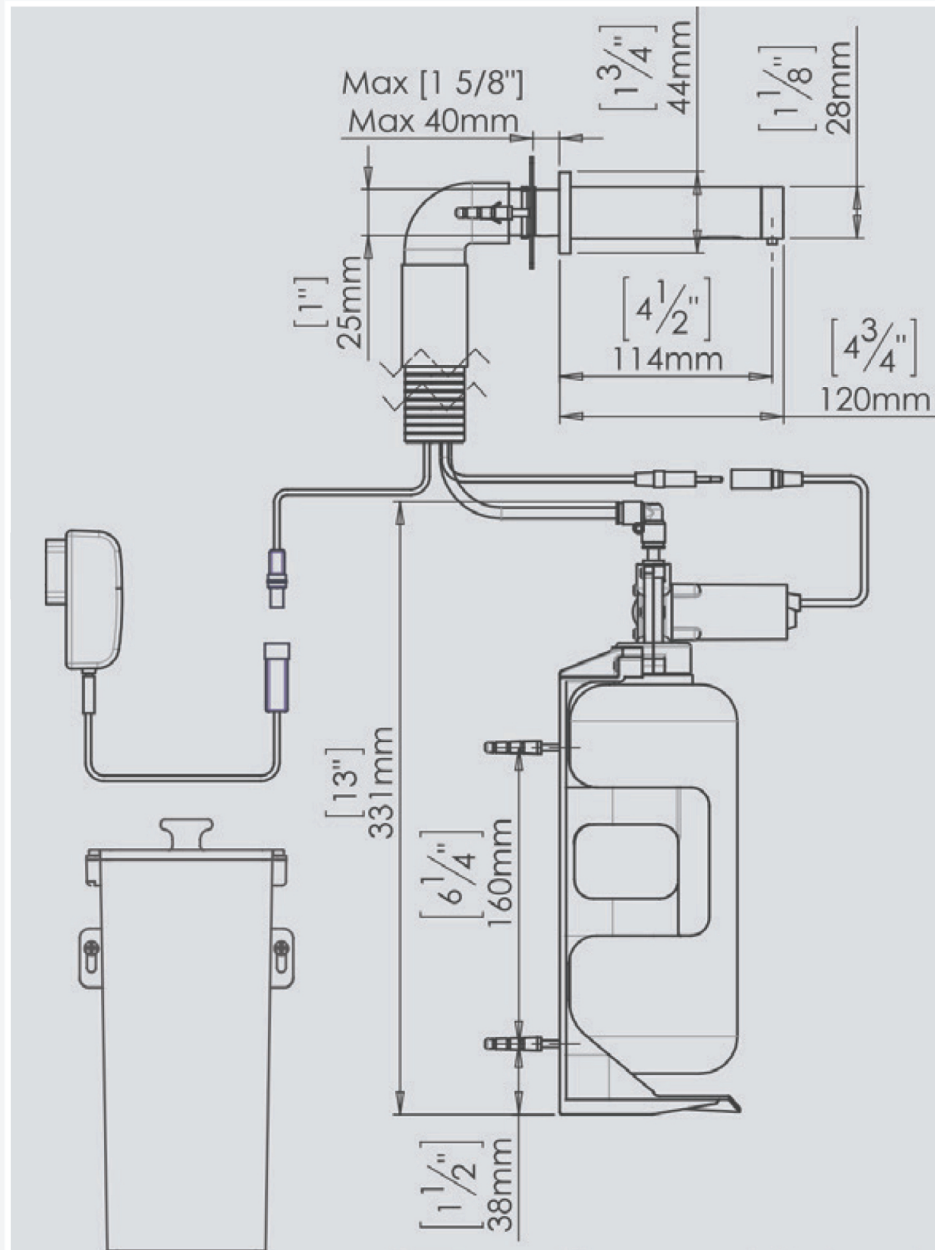


WALL MOUNT SOAP DISPENSER

MODEL: 2.2752.24.0.01



Capacity	1 Liter
Power Supply	Battery models: Battery Box for 6xD Alkaline batteries Mains models: 12V transformer
Soap viscosity	100 – 500 cPs
Standard discharge	1.4cc, Adjustable
Sensor range	35-155 mm +/- 10 mm (Adjustable by remote control)
Preset sensor range	80 mm +/- 10 mm

Check contents

Separate all parts from the packaging and check each part with the “Pack contents” section.

Make sure all parts are accounted for before discarding any packaging material.

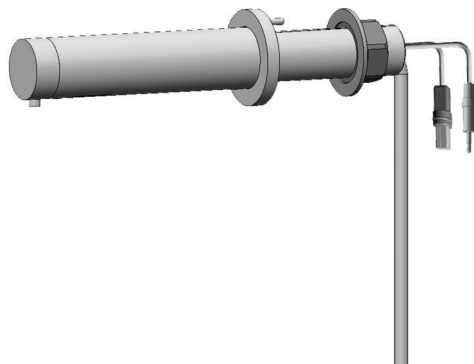
If any parts are missing, do not attempt to install your touch free soap dispenser until you obtain the missing parts.

Warnings

Do not install the system facing a mirror or any other electronic system operated by an infra-red sensor.

To prevent reflection problems, it is recommended to keep a minimum distance of 1.50 meters between the soap dispenser and any other objects.

IMPORTANT: Keep in mind that when using the faucet installed next to the soap dispenser, the user hands should not interfere with the soap dispenser sensor detection area.



1 X BODY ASSEMBLY



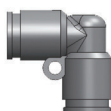
**1 X M 4 X 4
SET SCREW**



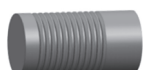
**1 X M 4 X 4
SET SCREW**



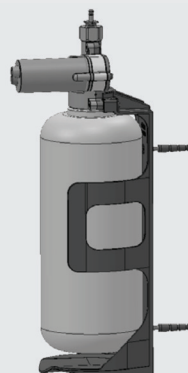
**2 X SCREW
3.5X1 1/4"**



**1 X QUICK
CONNECTION
FITTING**



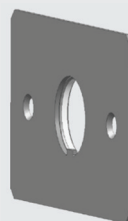
**1 X TEMPORARY
BASE COVER**



**1 X SOAP TANK WITH BOTTLE SUPPORT
AND PUMP ASSEMBLY**



**1 X ELBOW AND
CORRUGATED TUBE**



1 X WALL ROSETTE



B VERSIONS



E VERSIONS

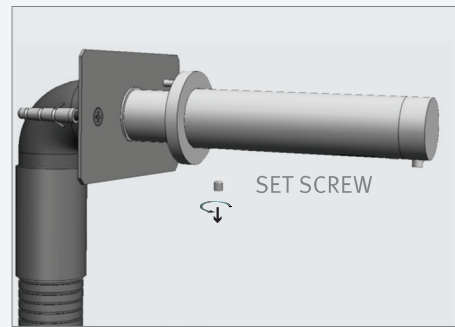
**1 X BATTERY BOX FOR 6XD ALKALINE
BATTERIES \ 12V TRANSFORMER**

STEP 1 – INSTALLING THE SOAP DISPENSER

1

Cut an adequate opening in the wall for the dimensions of the soap dispenser base (where you want to install the spout) and the corrugated tube.

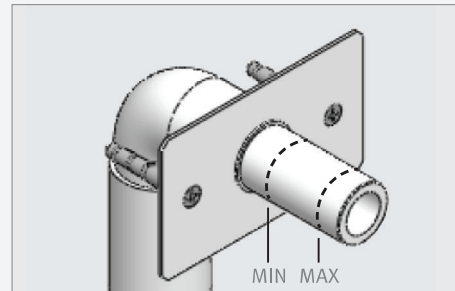
Disconnect the soap dispenser body with the rosette from the base by unscrewing the set screw.



2

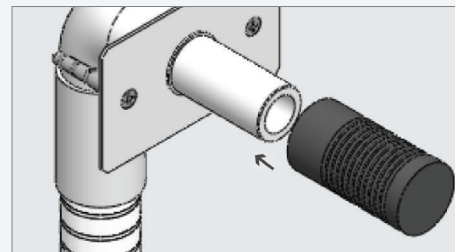
Mount the soap dispenser base into the opening in the wall and secure it using the two anchors provided in the package.

Important: The soap dispenser base should be installed so that the outside surface of the finished wall falls between the minimum and maximum lines marked at the base.



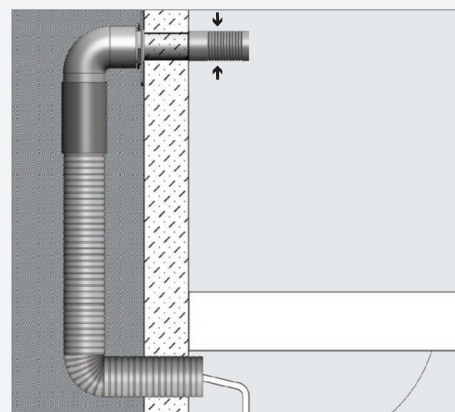
3

Assemble the temporary protective soap dispenser base cover.



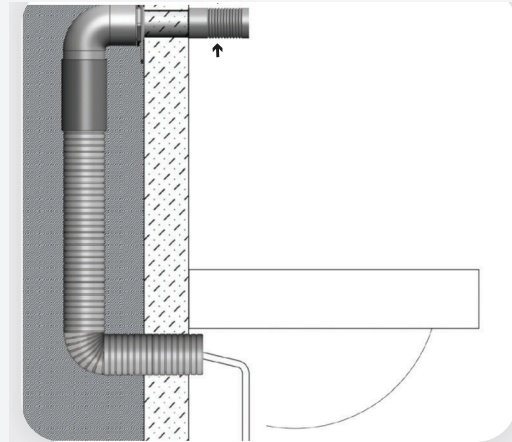
4

Assemble the corrugated tube to the soap dispenser base and make sure it stays outside the wall when you do the tiling.



1

Assemble the corrugated tube to the soap dispenser base and make sure it will stay outside of the wall when tiling.

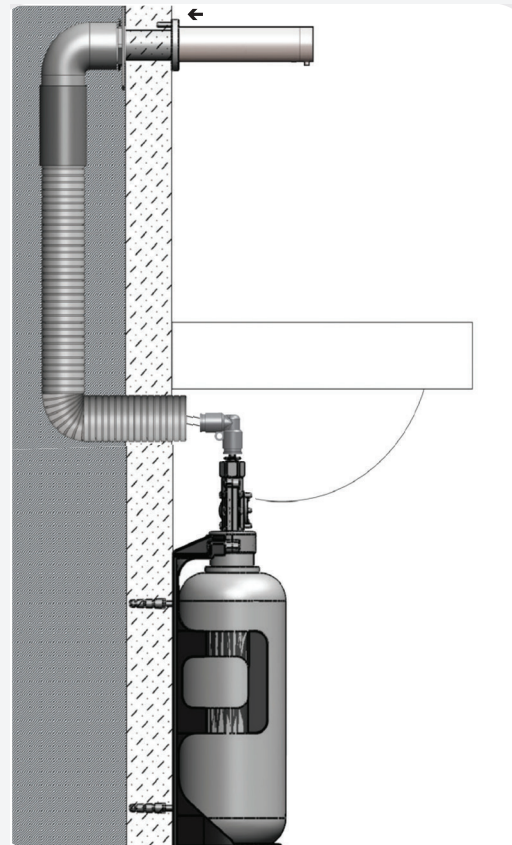


2

Once the works on electricity, plumbing and tiles have been finished, insert the wall rosette through the soap dispenser base, and cut the temporary soap dispenser base cover.

Fix the soap dispenser spout by inserting the nipple into the soap dispenser base and tighten the screw.

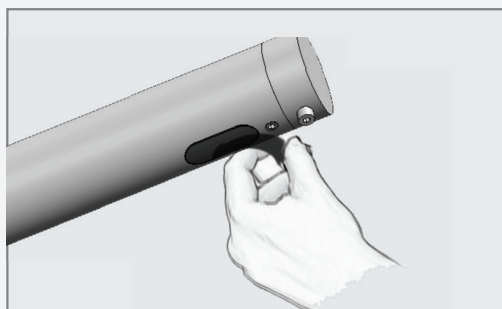
Pull the four way connector and the power supply connector out of the soap dispenser base, and lead it through the corrugated tube.



STEP 3 – CONNECTING THE POWER SOURCE

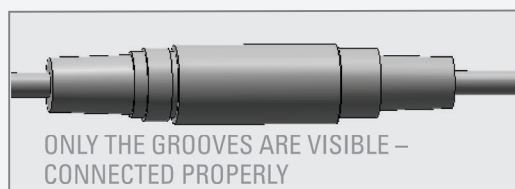
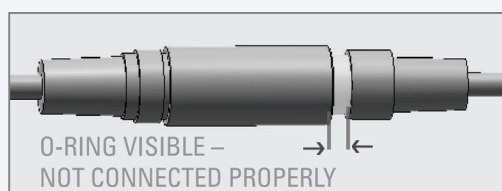
1

Remove the protective sticker covering the sensor. Keep away from the sensor range and check that no objects are in front of the sensor.



2

Connect the soap pump connector to the matching connector from the sensor. Please note that since the connector is waterproof, some friction might apply.



IMPORTANT: the 4 contacts connector should be connected properly so that the white o-ring is not visible and a clicking sound is heard.

PAY ATTENTION: If the 4 contacts connectors will not be connected properly, the pump will work continuously.

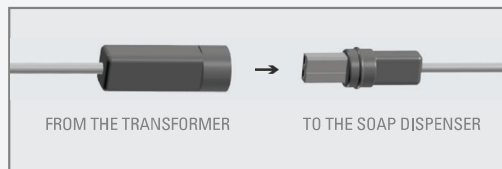
2a

For battery versions: install the battery box on the wall underneath the sink and connect the battery connector



2b

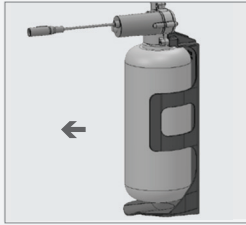


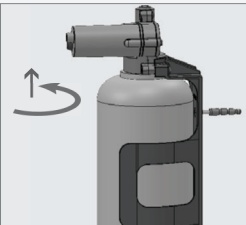
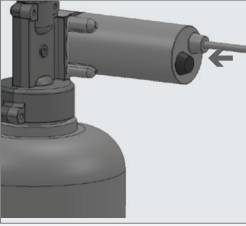

For transformer versions: plug the transformer into the electricity socket and connect the transformer connector



3

Wait about 10 seconds before you put your hands within the sensor range to avoid entering the adjustment mode.



1	Unscrew the soap tank from the pump assembly and pull it out from the bottle support.	
2	Fill in the liquid soap up to the top line.	
3	Insert the bottle back into the bottle support.	
4	Screw the soap tank back into the pump assembly. Make sure the tank is firmly secured into place.	
5	Press the refill button located at the back of the pump assembly until soap starts coming out of the soap dispenser spout. This operation can also be done using the soap dispenser remote control Refill function. NOTE: Once the soap in the soap tank has reached the bottom line the soap tank should be refilled. To refill the soap tank please refer to steps 1-5.	
		

If you acquired the remote control together with your soap dispenser, you may adjust the dispenser settings if required. To use the remote control hold it straight in front of the sensor at a distance of about 10-15 cm (4-6").

Attention: The remote control held out of the recommended range (too close or too far) will not operate.

The remote control can be used to adjust the following functions:

1-SOAP QUANTITY

The 1-4 drop keys allow the user to choose the desired soap quantity.

① 0.7 to 0.9

② 1.2 to 1.6

③ 1.6 to 1.9

④ 2.1 to 2.3 *

Indication: continuous blinking of the red light in the sensor eye.

*The exact dosage depends on soap viscosity.

2-ADJ

This function resets the sensor back to factory settings.

Indication: 2 blinks of the red light in the sensor eye.

3-TEMPORARY OFF FUNCTION

This function is ideal to perform any kind of activity in front of the sensor without operating the system (for example, cleaning). The soap dispenser will remain shut for one minute when this button is pressed once.

To cancel this function and to return to normal operation press the On/Off button again or wait for one minute.

Indication: OFF – 2 fast blinks, ON – 4 fast blinks

4-FILL THE SOAP TANK

Once the soap tank has been filled \ re-filled, press the FILL button. The pump will run for one minute for priming the soap to the soap dispenser spout.

To stop this activity press the FILL button again. If the soap has not started coming out of the spout, press the Fill button again.



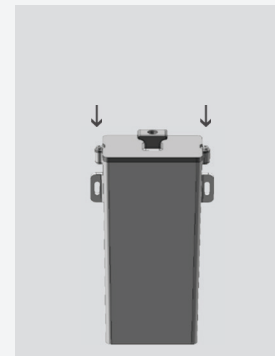
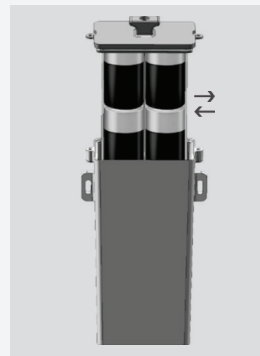
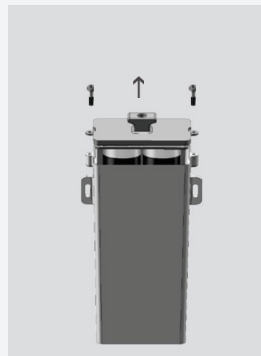
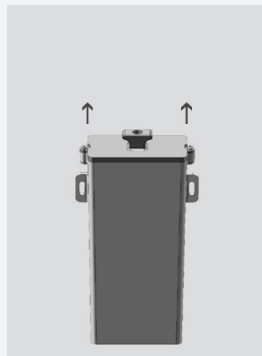
Battery models only

When the battery weakens, the red indicator light will blink at a constant rate when the user's hands are within the sensor range. The battery must be replaced within two weeks.

To replace the battery in battery models:

1. Carefully open the battery box, use a 2.5 mm Allen key
2. Remove the old batteries
3. Replace the used batteries with new D batteries
4. Close the box.

NOTE: Do not mix used batteries with new ones.



Important: Spent batteries should not be disposed of with normal household waste. Contact your local authority for information on waste disposal and recycling.



Care and cleaning of chrome and special finishes

DO NOT use steel wool or cleansing agents containing alcohol, acid, abrasives, or the like. Use of any prohibited cleaning or maintenance products or substances could damage the surface of the soap dispenser. For surface cleaning use ONLY soap and water, then wipe dry with a clean cloth or towel. When cleaning bathroom tiles, the soap dispenser should be protected from any splattering of harsh cleansers.

Disassemble of the soap pipe from the pump

The soap pipe can be disconnected from the soap pump by a simple slide & pull action. The sliding ring of the quick connection fixation nipple on the pump should be pulled down. It releases the open end of the soap pipe which can then be easily pulled out.

PROBLEM	INDICATOR	CAUSE	SOLUTION
No soap is coming out of the spout	Red light in the sensor flashes continuously when the user's hands are within the sensor's range.	Low battery.	Replace battery.
	Red light flashes (once) and the soap pump operates.	Soap has run low or is completely out.	Refill the soap tank. <i>Refer to page 12</i>
		The soap tank has been filled, but soap has not reached the spout.	Press the refill button located at the bottom of the pump to prime the soap to the spout. Alternatively, remote control FILL button can be used for priming. <i>Refer to page 13</i>
		Soap solidification in the pipe.	Fill the tank with hot water (50/60C°) and run the pump continuously for a short time until the pipe is cleansed.
		The pipe for the specific dispenser is bent or curved and does not reach the bottom of the soap tank.	Make sure the pipe is adjusted inside the tank for an ideal soap intake.
	Red light in the sensor does not flash (once) when user's hands are within the sensor range.	Sensor is picking up reflections from the washbasin or another object.	Eliminate cause of reflection.
		Connectors between the electronic unit and power source are disconnected or not properly connected.	Connect the electronic unit connectors to the power source connector.
Soap coming out from the spout does not stop	Soap pump runs continuously	The connectors between the pump and the electronic unit are not connected properly.	Connect the connectors properly so that the white o-ring is not visible.
		The connectors between the pump and the electronic unit are not connected properly.	Connect the connectors properly so that the white o-ring is not visible.