

INSTALLATION

INSTRUCTIONS

BATHROOM CABINETRY INSTALLATION GUIDE

Illustrations may not reflect every exact model

INSTALLATION INSTRUCTIONS

Congratulations on choosing the experience center of international bathroom living. These quality, service and design ensure the elegant life of bathroom space.

To install your bathroom products please ensure you read the following instructions below.

IMPORTANT

All vanities must be installed by a licenced plumber.
Vanities and tops must be installed onto finished surfaces.

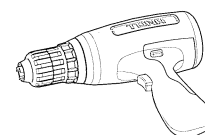
It is imperative that all bathroom installations are ventilated to meet standards.

FAILURE TO PROVIDE VENTILATION TO MEET THESE STANDARDS WILL VOID MANUFACTURERS WARRANTY.

Prior to installation

It is important that the product is unpacked and inspected for any damage, defects and that the product supplied is correct. If any of the above is apparent, DO NOT PROCEED WITH THIS INSTALLATION, AND IMMEDIATELY CONTACT THE STORE OF PURCHASE.

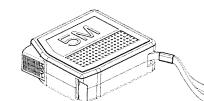
TOOLS REQUIRED FOR INSTALLATION



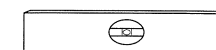
Electric/Battery Drill



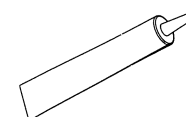
Drill Bit



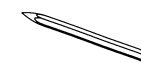
Tape Measure (3m-5m)



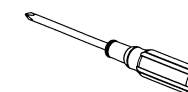
Spirit Level



Kitchen & Bathroom
Non-Acidic Silicone



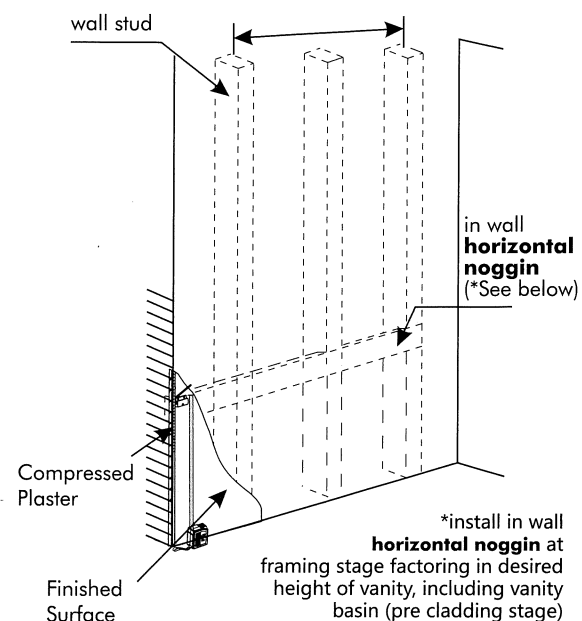
Pencil



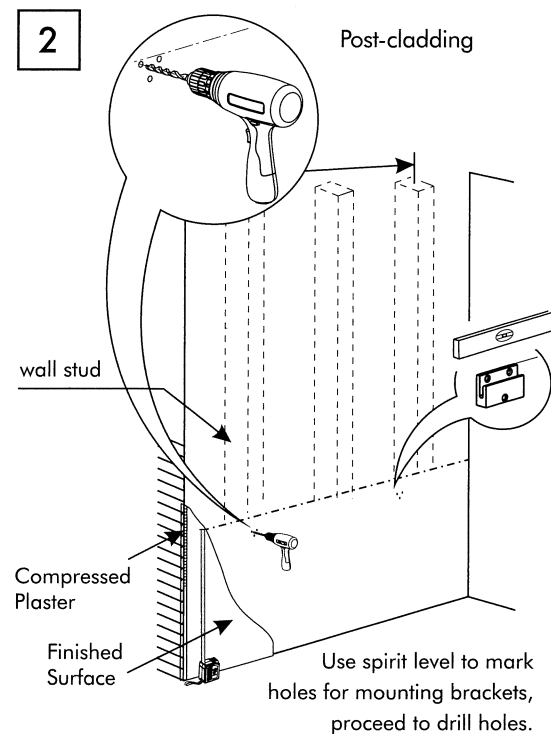
Screw Driver

WALL HUNG VANITY WITH WALL BRACKET SYSTEM FOR HOLLOW WALLS

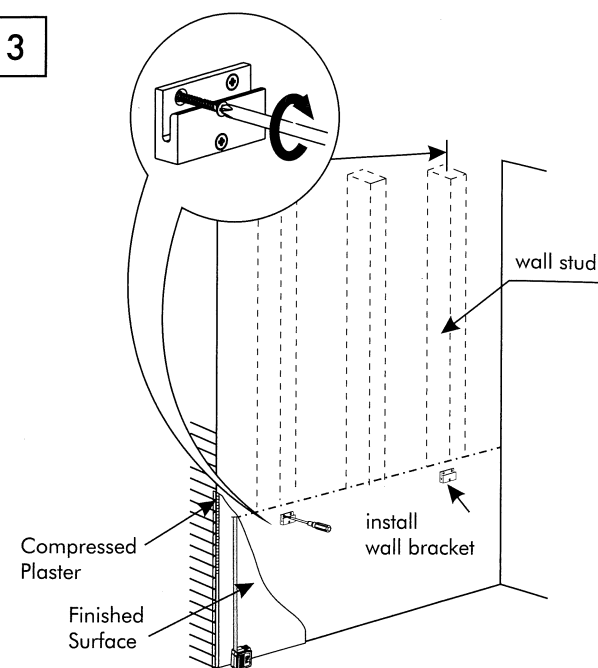
1 Pre-cladding



2 Post-cladding



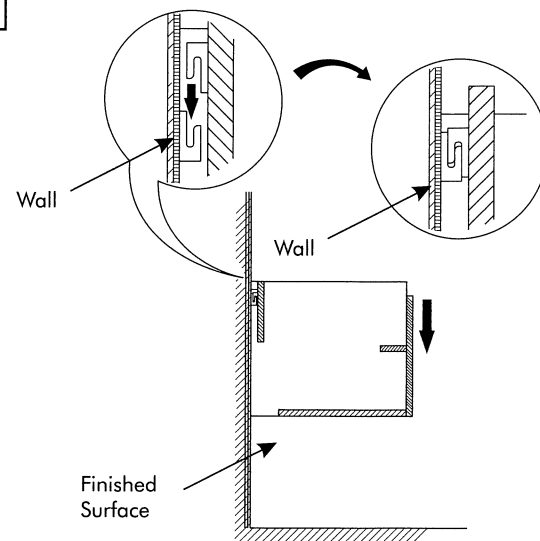
3



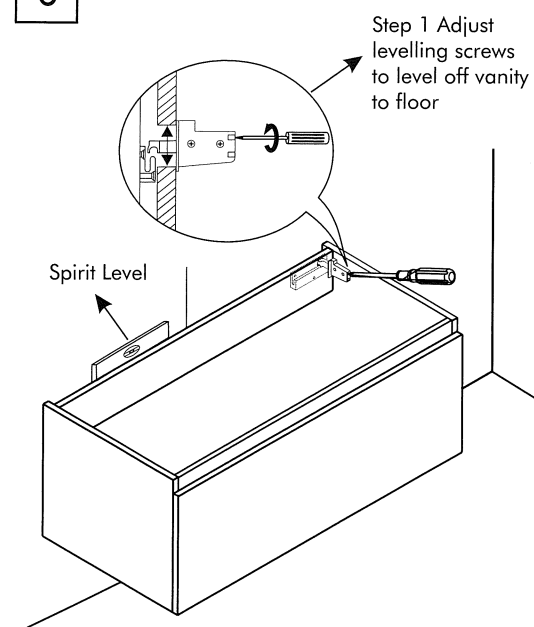
4

To avoid damage remove cabinet drawers. Then cover the drawer runners with plastic sheet to prevent debris from getting into the mechanism. Refer to page 12-14 for removing your drawers/doors for Blum/DTC runners.

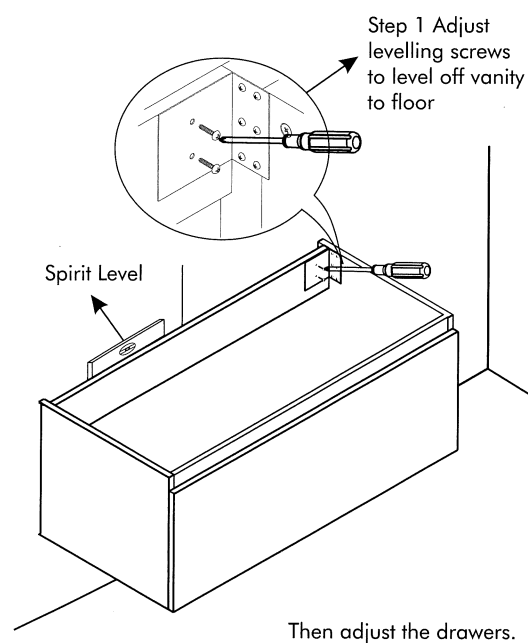
5



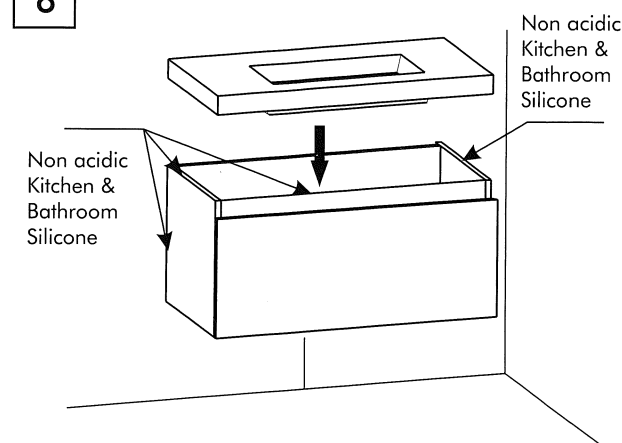
6



7



8



9

The unit must be sealed along the back edge of the top and down the sides against the wall with non acidic bathroom & kitchen silicone. Seal around the cabinet with silicone.

10

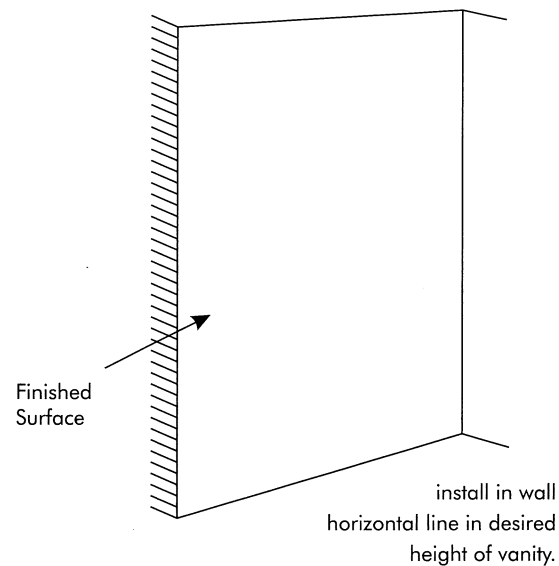
Please note when installing an undermount basin or counter basin onto a stone top, they must be siliconed on. When the silicone has dried ensure you caulk around the basin and stone top.

11

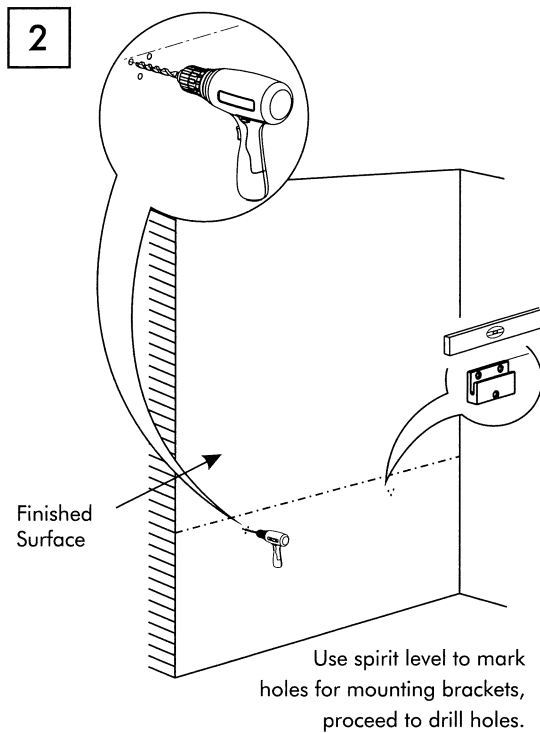
The vanity is now ready for the tapware and waste installation.

WALL HUNG VANITY WITH WALL BRACKET SYSTEM FOR CONCRETE WALLS

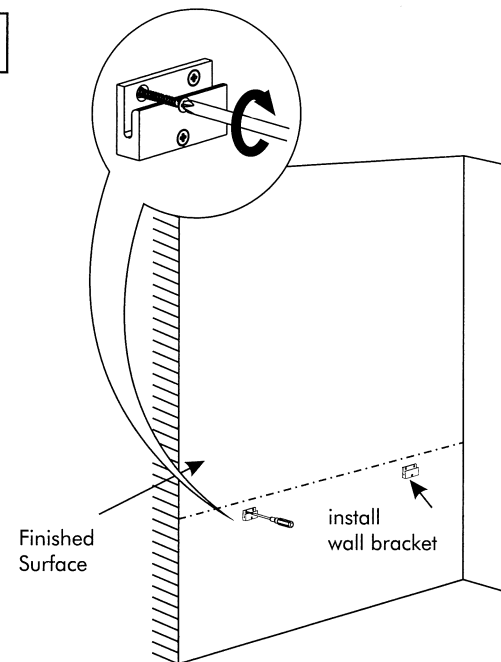
1



2



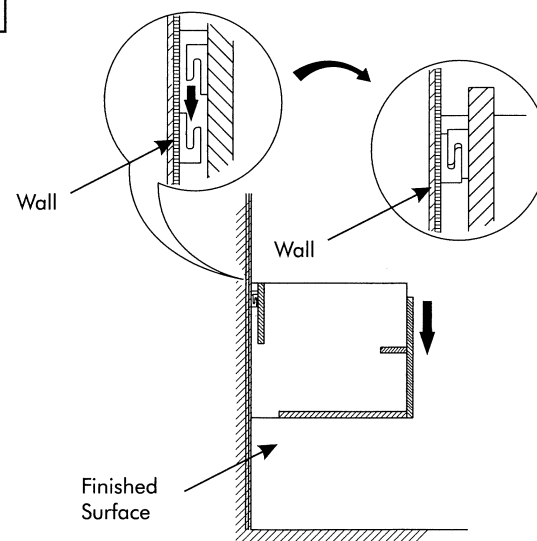
3



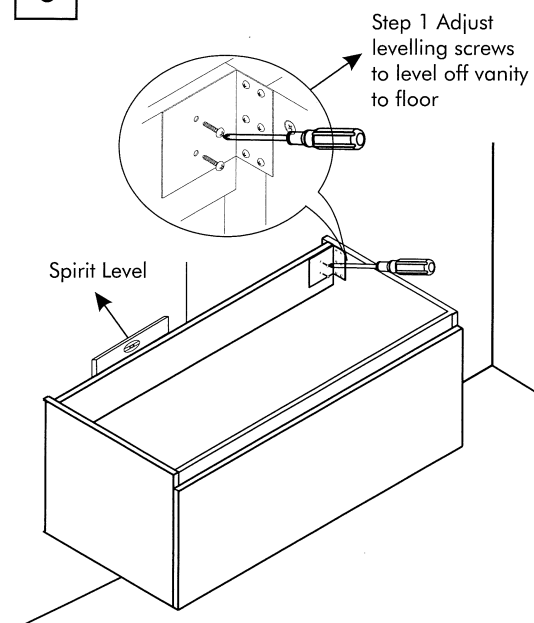
4

To avoid damage remove cabinet drawers. Then cover the drawer runners with plastic sheet to prevent debris from getting into the mechanism. Refer to page 12-14 for removing your drawers/doors for Blum/DTC runners.

5

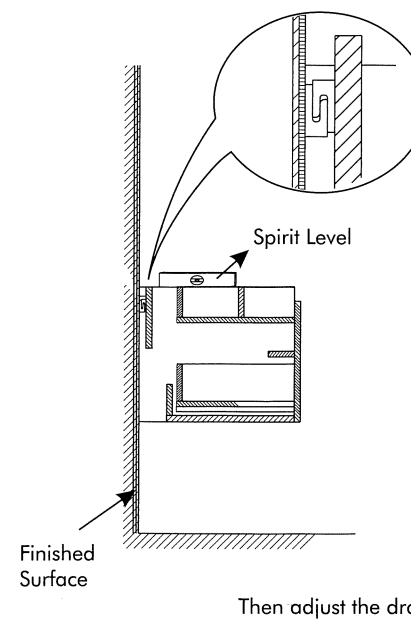


6

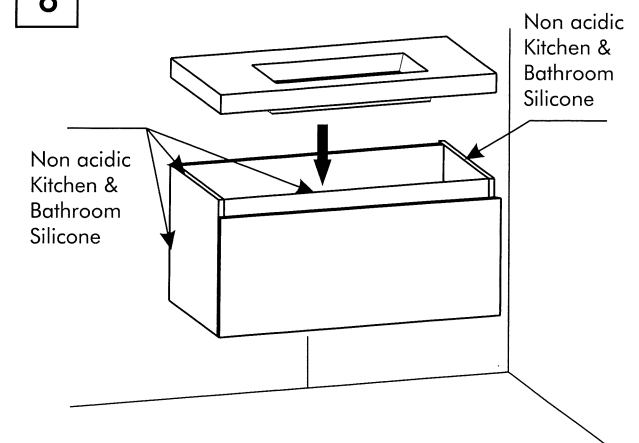


7

Step 2 Adjust levelling screws to level off vanity to wall



8



9

The unit must be sealed along the back edge of the top and down the sides against the wall with non acidic bathroom & kitchen silicone. Seal around the cabinet with silicone.

10

Please note when installing an undermount basin or counter basin onto a stone top, they must be siliconed on. When the silicone has dried ensure you caulk around the basin and stone top.

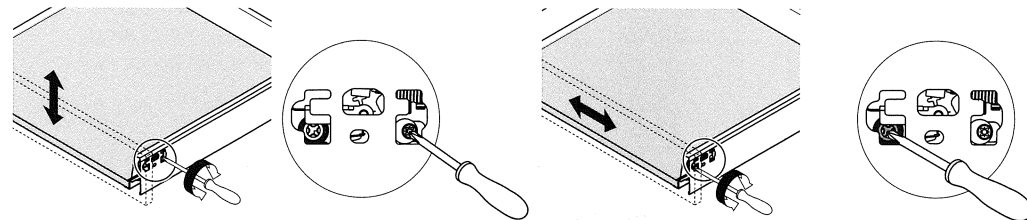
11

The vanity is now ready for the tapware and waste installation.

BLUM DRAWER/HINGE ADJUSTMENT AND REMOVAL

Blum Drawer Adjustment and removal instruction

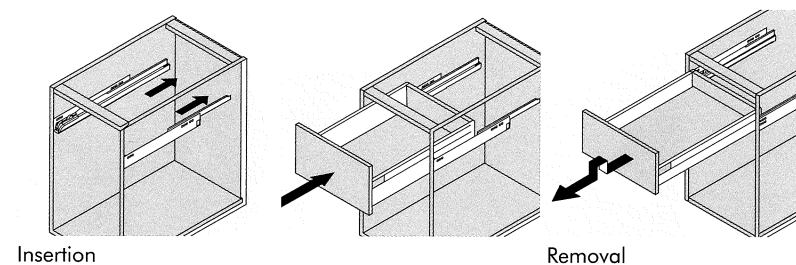
Side Adjustment



Height Adjustment

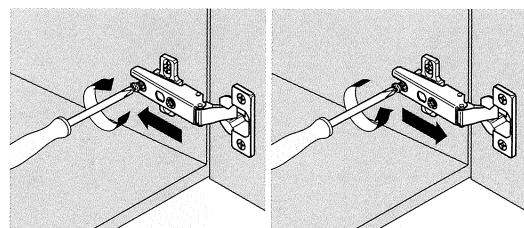
Side Adjustment

Drawer insertion & removal



Blum Hinge Adjustment and removal instruction

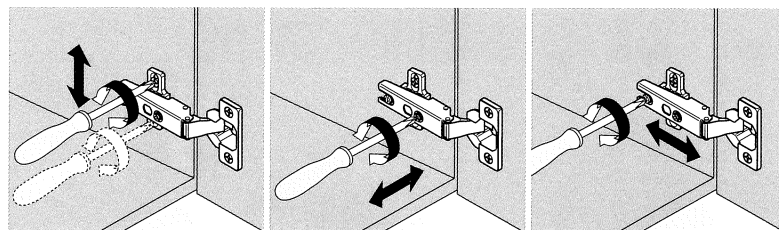
Modul



Assembly

Removal

Adjustment



Height Adjustment

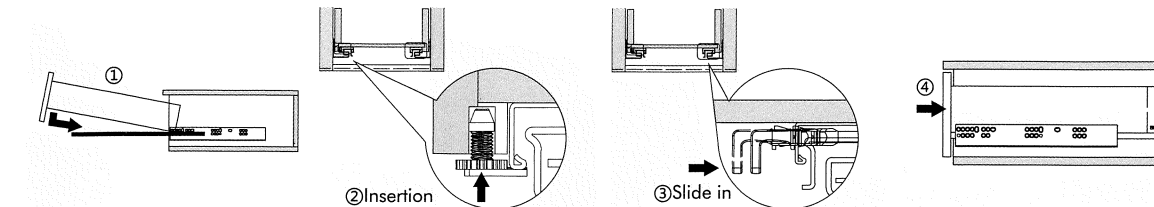
Side Adjustment

Depth Adjustment

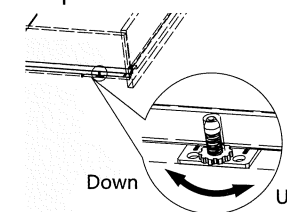
Unihopper DRAWER/HINGE ADJUSTMENT AND REMOVAL

Unihopper general drawer/hinge adjustment and removal

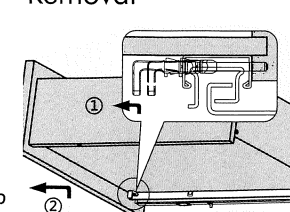
Installation



Adjustment

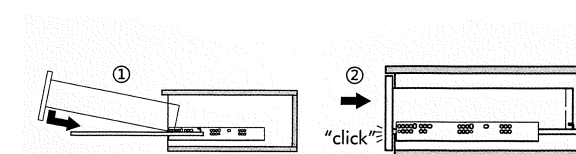


Removal

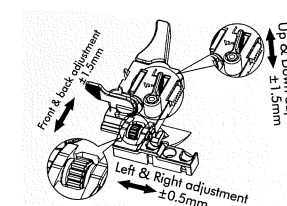


Unihopper Quick Assembly Drawer Slide

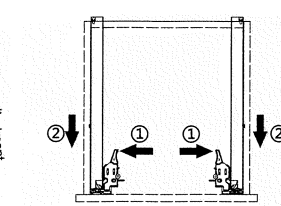
Installation



Adjustment



Removal



IMPORTANT



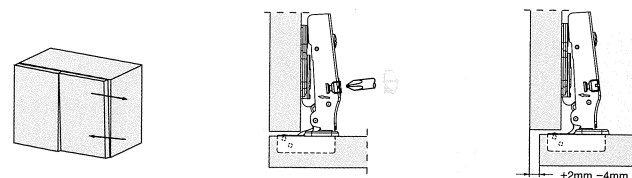
1. The drawer slides unsteadily?
To prevent debris from getting into the mechanism while assembling.
2. Cannot work smoothly?
Check if the size of drawer and cabinet meet the requirement;
check the drawer is square or diamond; make sure the slide in level.
3. Quick assembly failed?
Correct the front and back assembly position of slide
4. Drawers cannot fully close?
Correct the front and back assembly position of slide
5. Fail to remove the drawer?
Turn the quick assembly fittings; Take out the lock pin.
6. Rebound distance not enough?
Cabinet must be put in horizontal position to avoid the slide incline backward.
7. Drawer fails to rebound?
If the rebound distance less than 4mm,
quick assembly fittings should be adjusted.

Note: Only applies to rebound guide rail

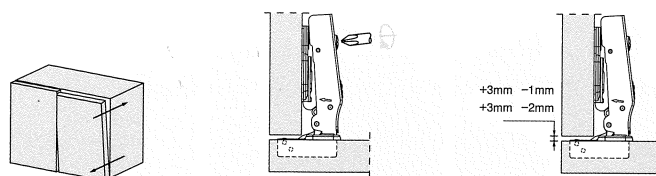
DTC DRAWER/HINGE ADJUSTMENT AND REMOVAL

DTC Hinge Adjustment and removal instruction

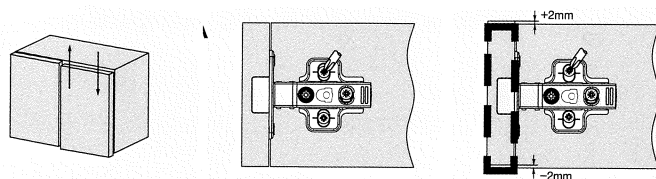
Side Adjustment



Depth Adjustment

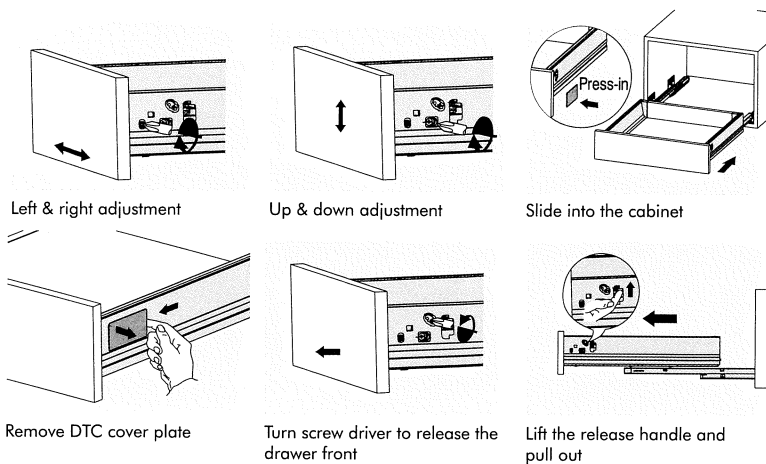


Height Adjustment



DTC Drawer Adjustment and removal instruction

Height & Side Adjustment



CARE INSTRUCTIONS

to allow your products to remain as elegant as the day they were installed please read the guide below.

DOOR AND CABINET CARE:

Regular cleaning with a damp cloth is sufficient. Never use strong detergents or abrasive cleaners as this may damage the surface finish of your furniture.

GLASS CARE:

When cleaning glass panels or mirrors, use a cloth with approved window/glass cleaner. Do not use washing powders or any other substance containing abrasives, as these will scratch the glass. Bathroom furniture may deteriorate if subjected to heavy water spillage or prolonged condensation.

POLYMARBLE BASIN CARE:

To maintain your Polymarble basin it is recommended to regularly clean your basin using a damp sponge with warm soapy water. Avoid using abrasive cleaners, ammonia-based products or bleaches as these products will damage the surface of your Polymarble basin.

SOLID SURFACE COUNTERTOP/BASIN CARE:

For general cleaning, just use soap and water or any ammonia based household cleaners. For stubborn stains, use a mild abrasive cleaner or a diluted solution of bleach. To remove light scratches and to renew the finish, use a combination of mild abrasive and a "Kitchen Scrub" pad or the equivalent pad. Matte Finish : To remove deep scratches and cuts, use a 600grit sandpaper equipped in the package using a sanding block. Sand until the scratch disappears. Be sure to feather out the area so that you do not leave a low spot in your counter top. Next, restore the finish by using a mild abrasive cleaner and a "Kitchen Scrub" pad or the equivalent pad.