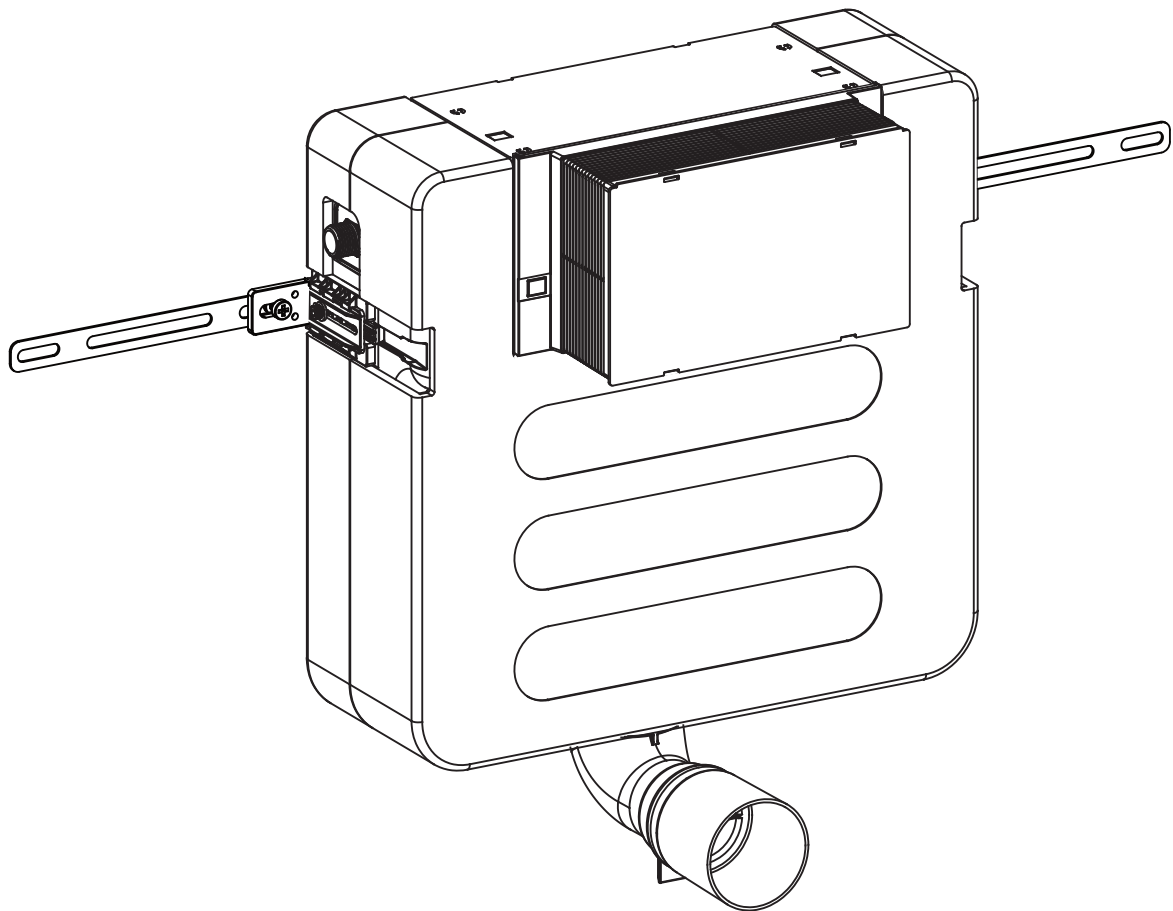
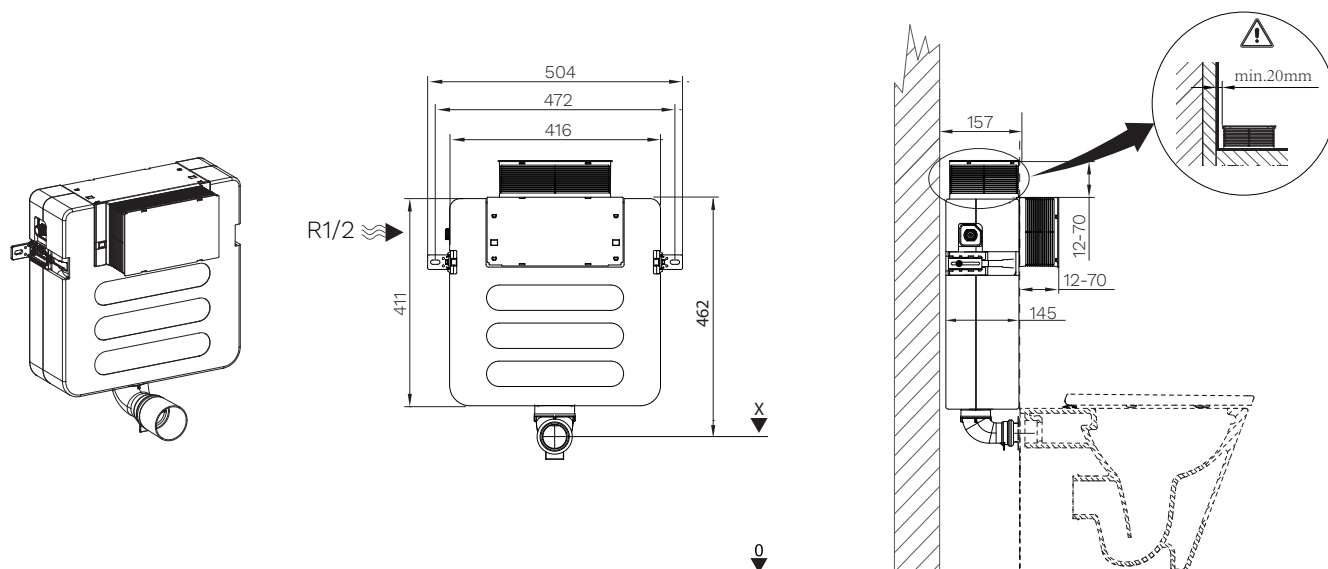


**INCASSO FRONT/TOP FLUSH CONCEALED
CISTERN**
PA330
INSTALLATION INSTRUCTIONS



TECHNICAL



For installation with:

- Drywall construction
- Nib wall or room-height pre-wall installations
- PARISI Dual flush mechanical buttons
- Wall Faced WCs with connection dimensions in accordance with AS1172.1:2014

Characteristics

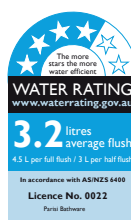
- Fixing piece for fastening in wood frame construction
- Concealed cistern with top or front actuation
- Concealed cistern, fully insulated against condensation
- Water supply connection on the left
- Water supply connection, dezincification-resistant
- Protection cover box for service opening protects against moisture and dirt

Technical data

Flow pressure	30~1200kPa
Maximum operating temperature, water	25 C
Flush volume, factory setting	4.5 and 3L
Flush volume large, adjustment range	4.5/6L
Flush volume small, adjustment range	3~4L

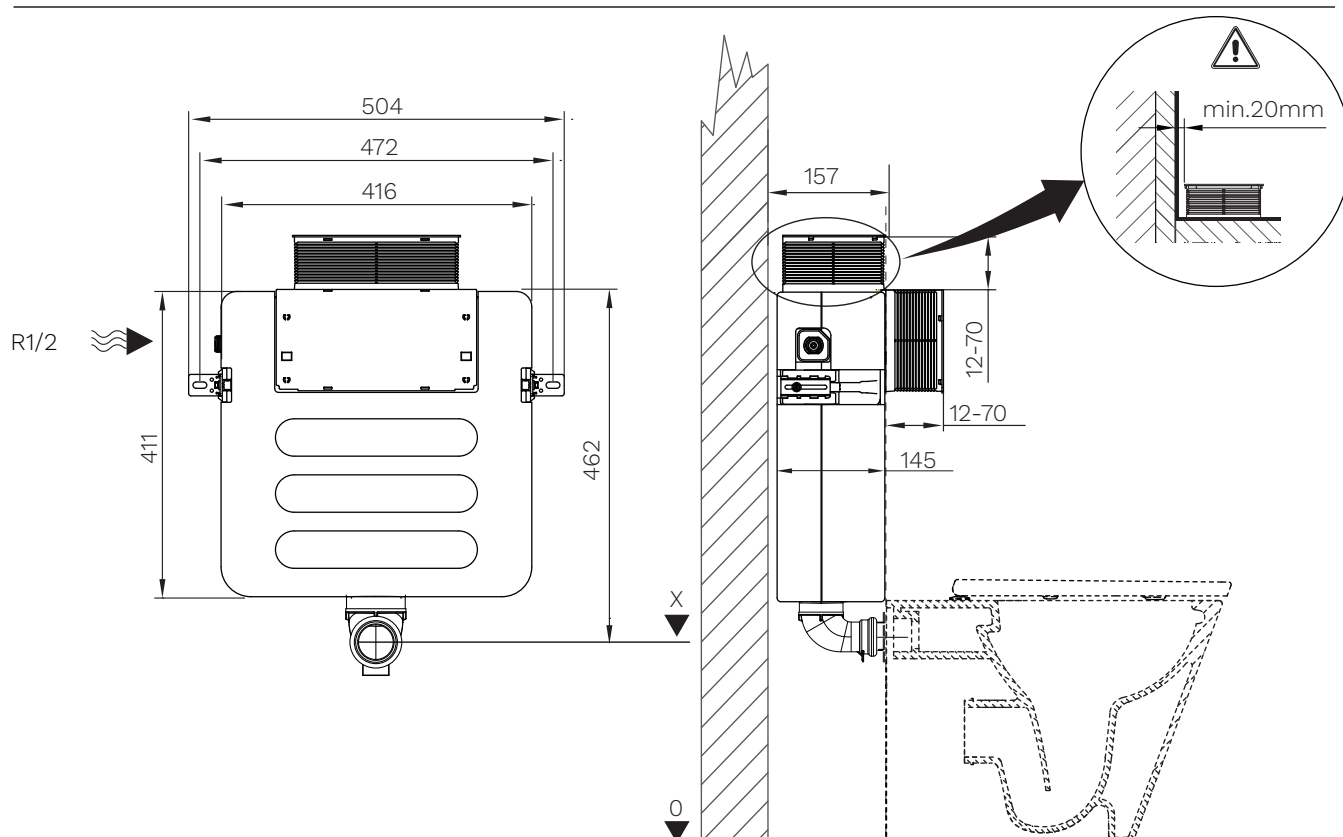
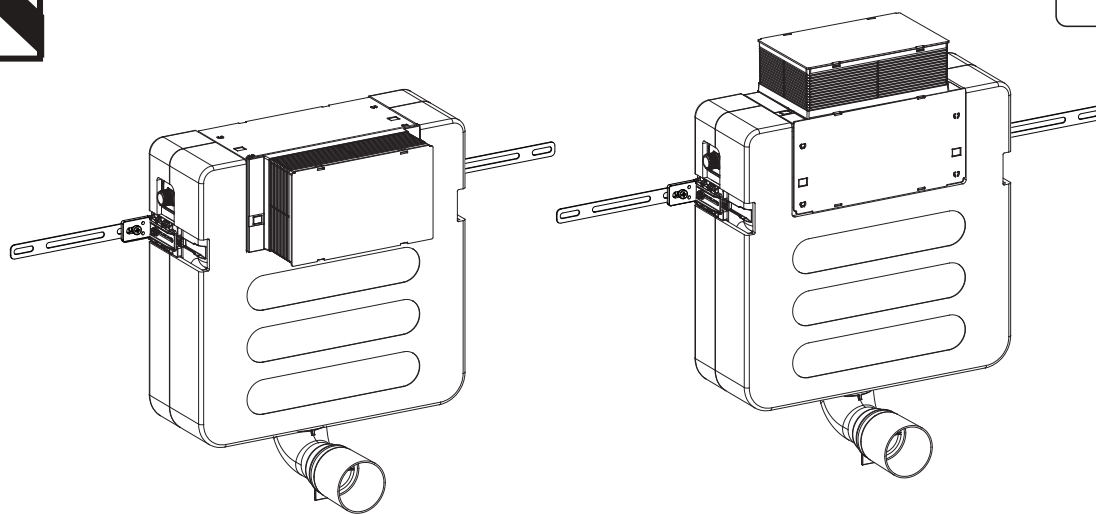
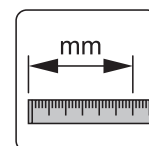
Included in this carton

- Water supply connection R 1/2", with integrated angle stop valve
- Protection box for service opening
- 1 protection plugs
- Fastening material



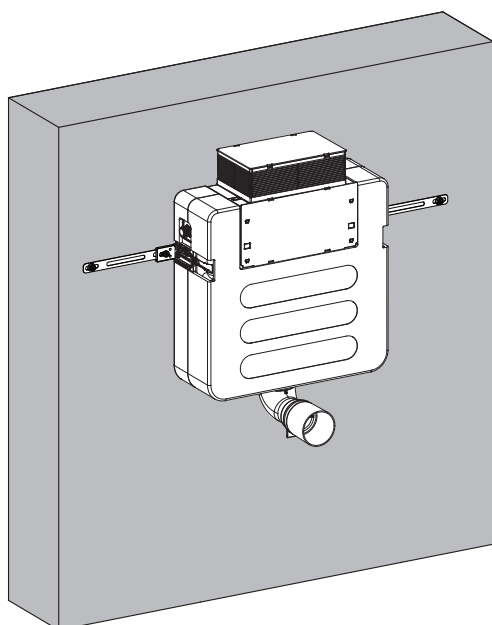
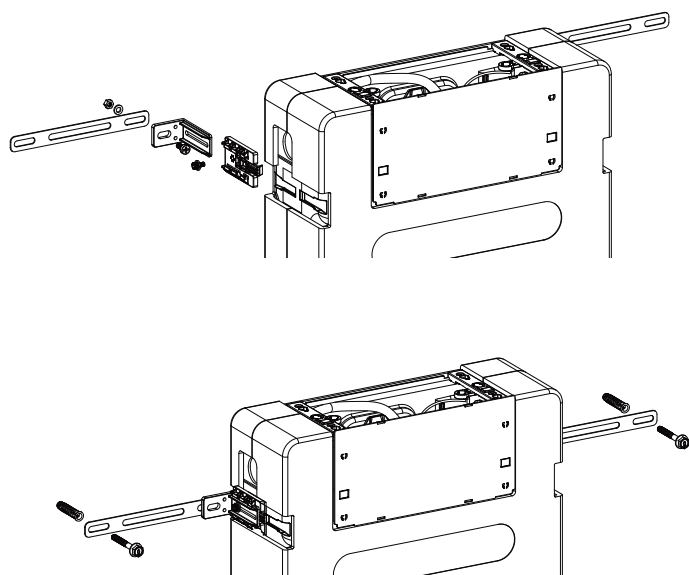
Product Code	Flush Volume	Width	Height	Depth
PA330	4.5/3L	504mm	462mm	145mm

INSTALLATION INSTRUCTIONS

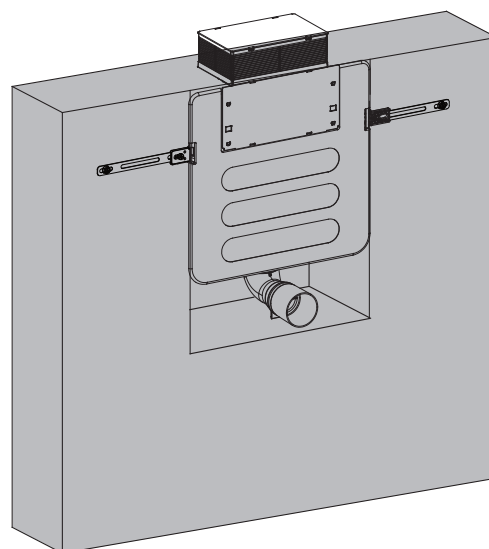
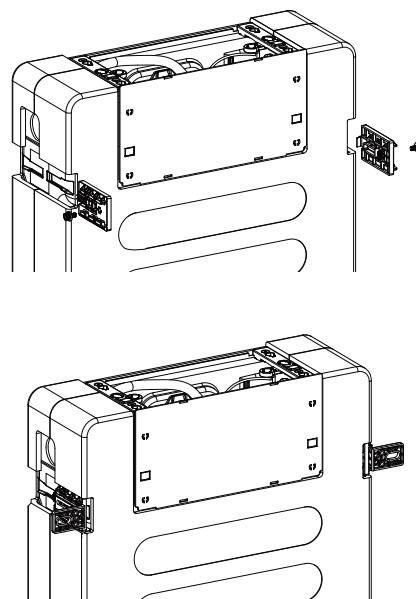


INSTALLATION INSTRUCTIONS

A

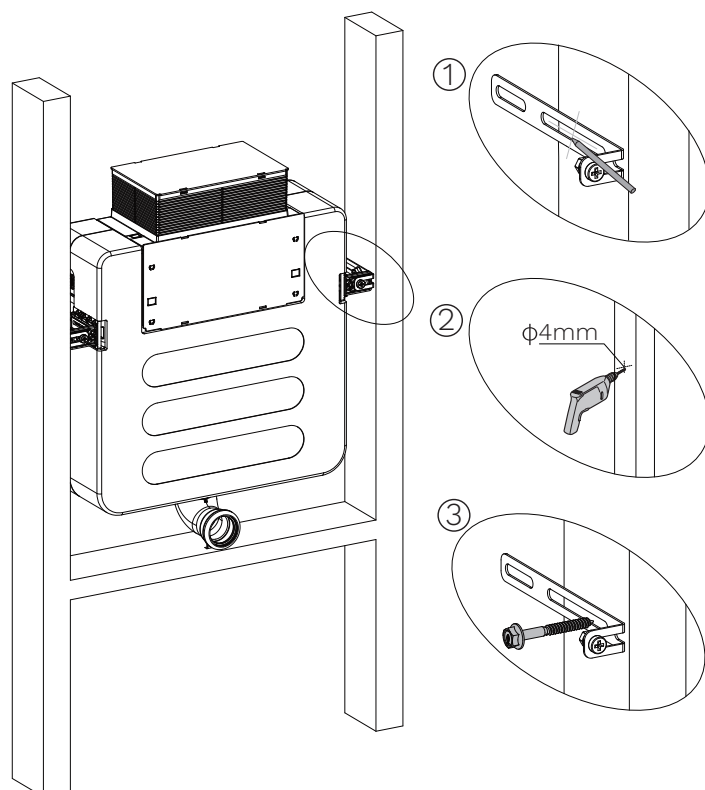
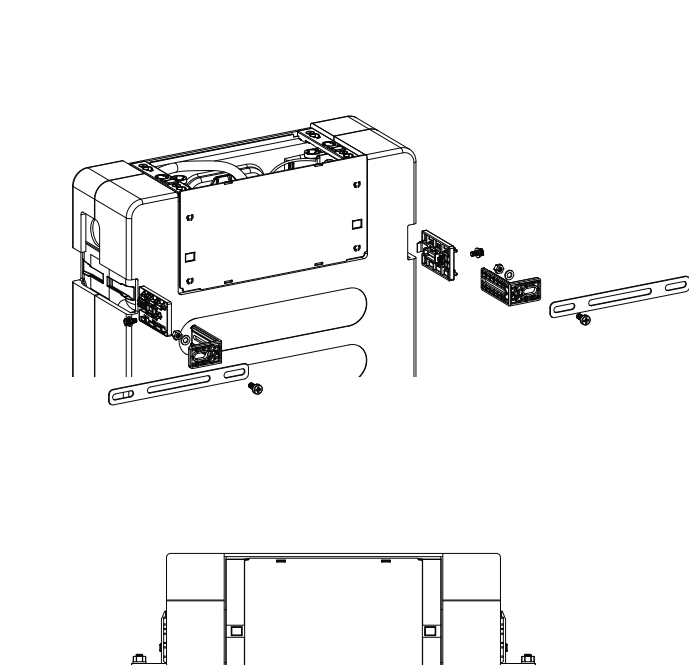
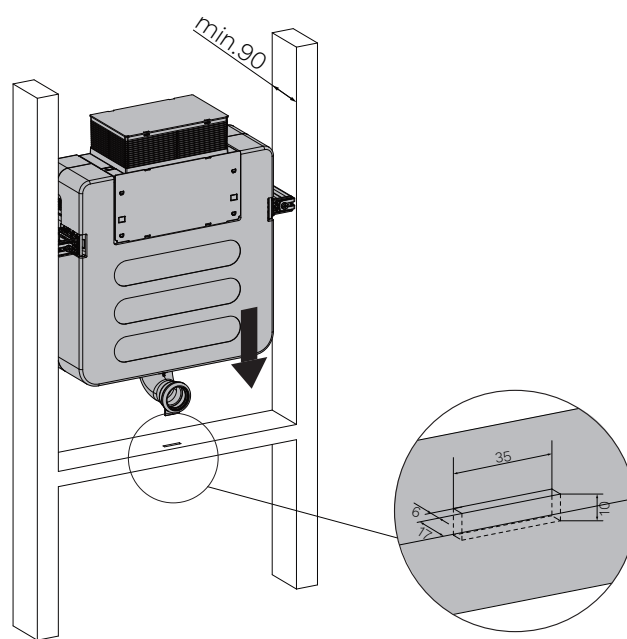
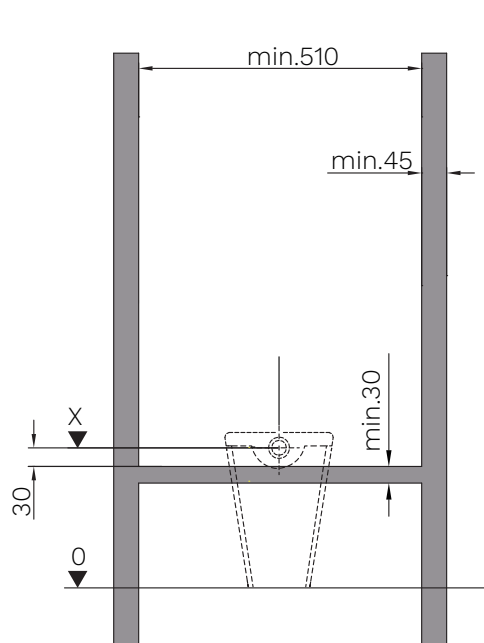


B

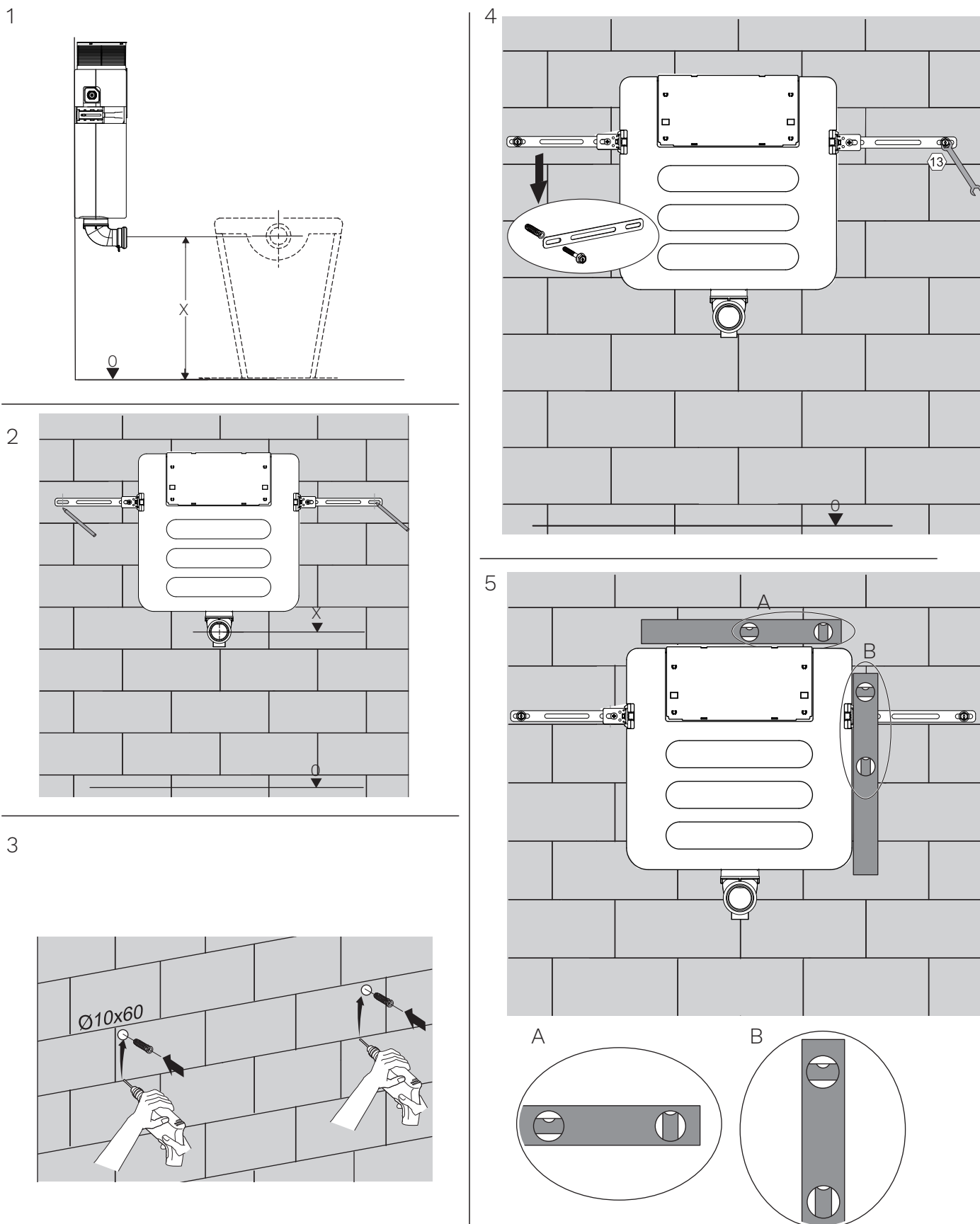


INSTALLATION INSTRUCTIONS

C

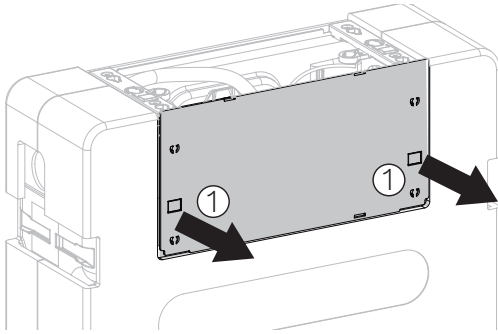


INSTALLATION INSTRUCTIONS

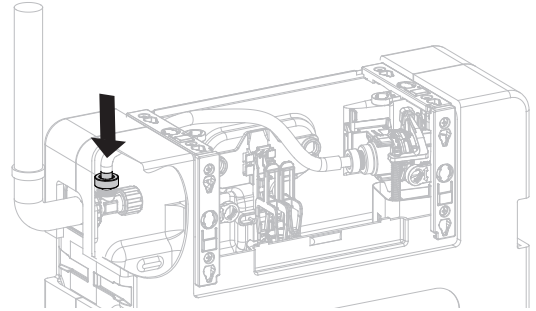


INSTALLATION INSTRUCTIONS

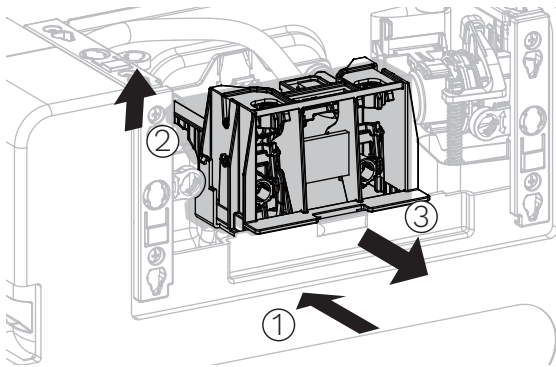
6



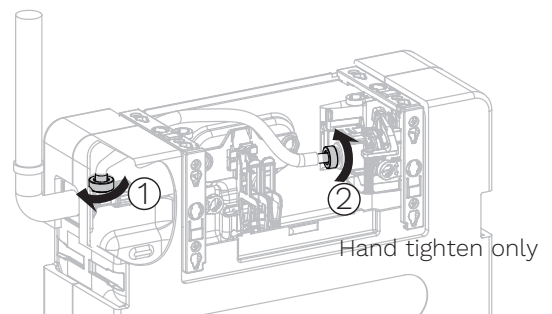
10



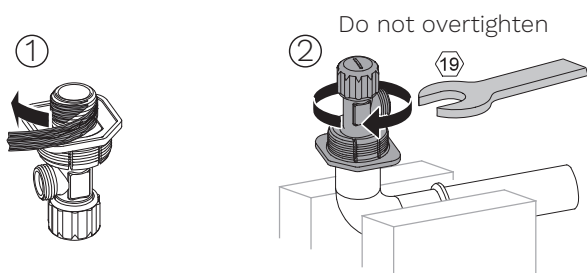
7



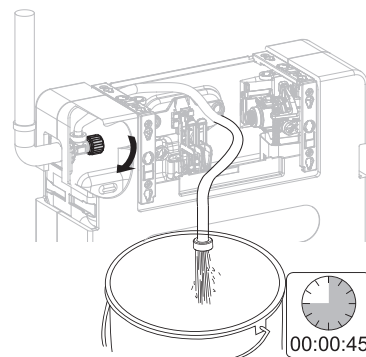
11



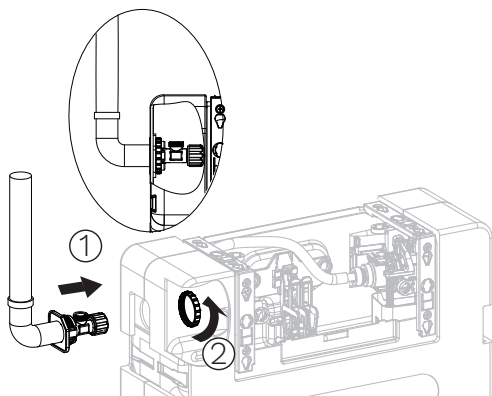
8



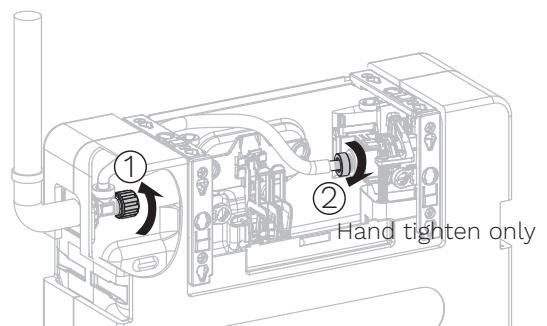
12



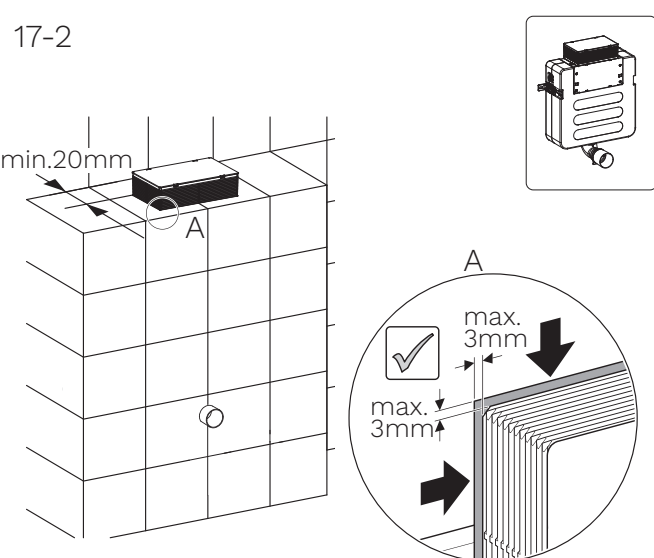
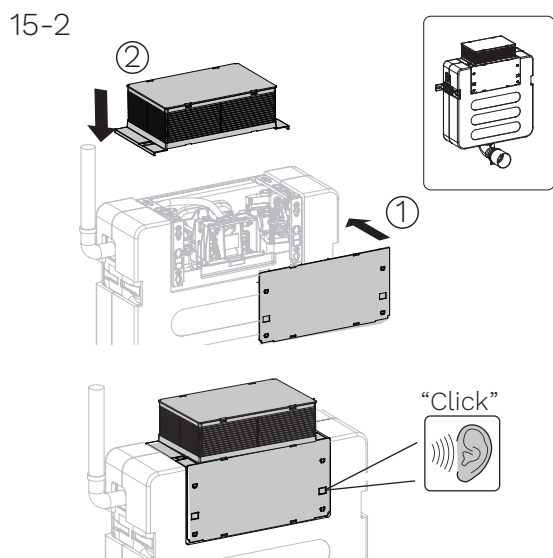
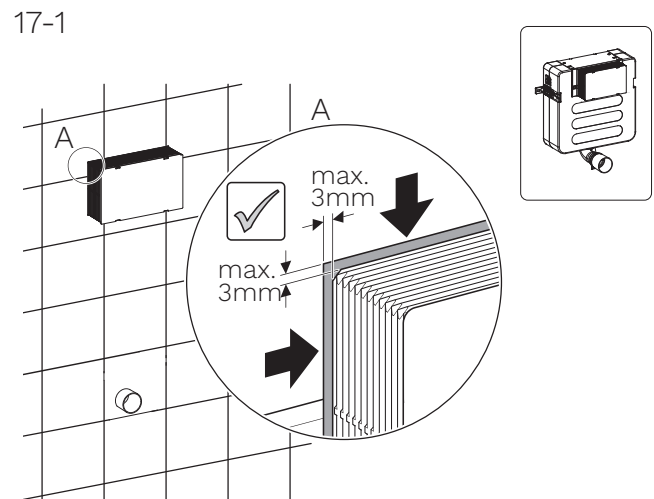
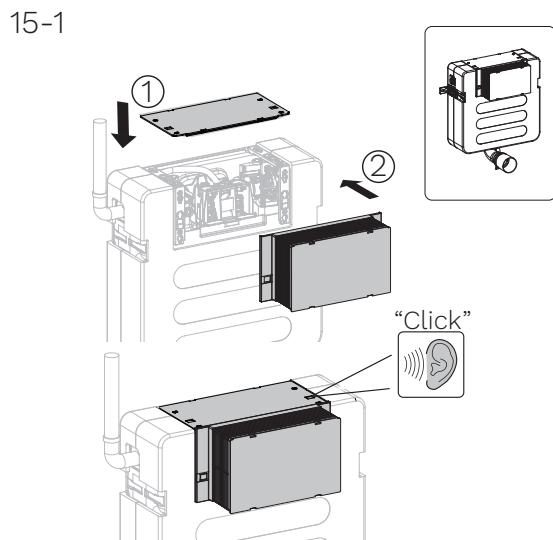
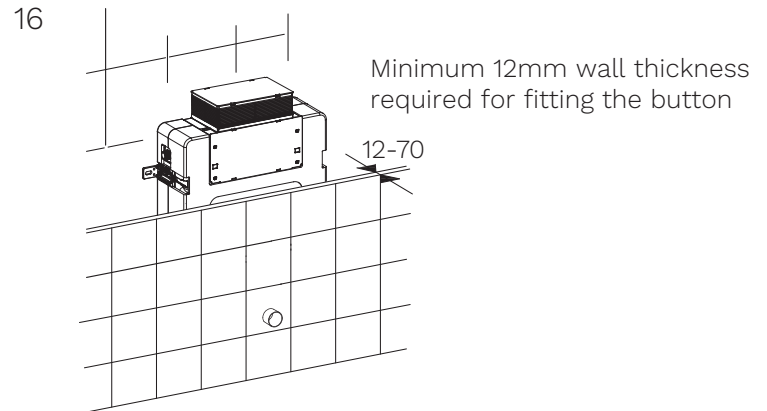
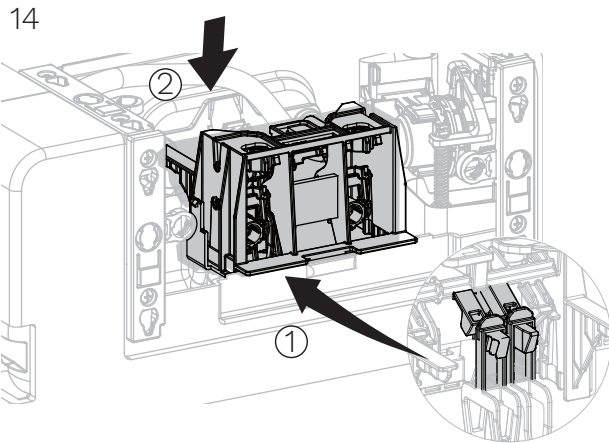
9



13



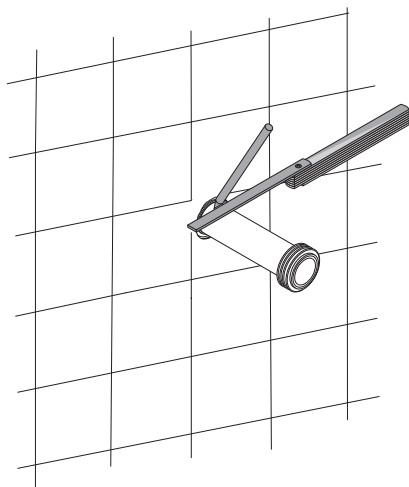
INSTALLATION INSTRUCTIONS



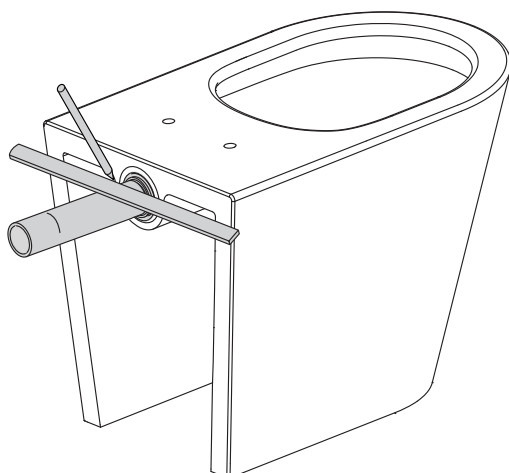
INSTALLATION INSTRUCTIONS



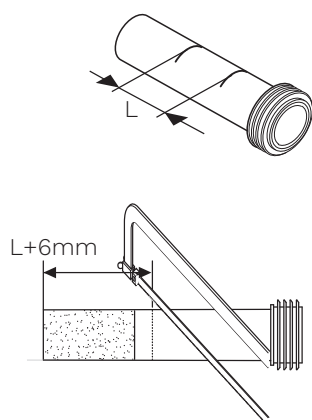
1



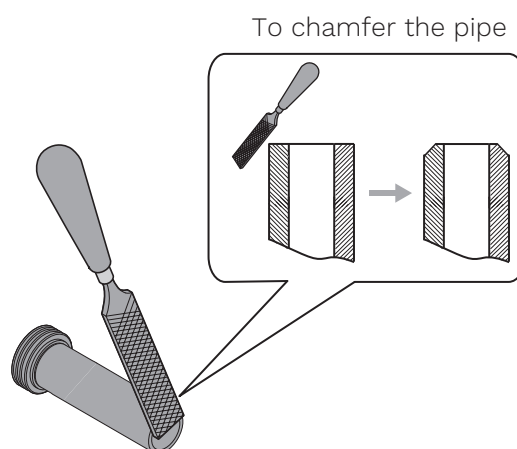
2



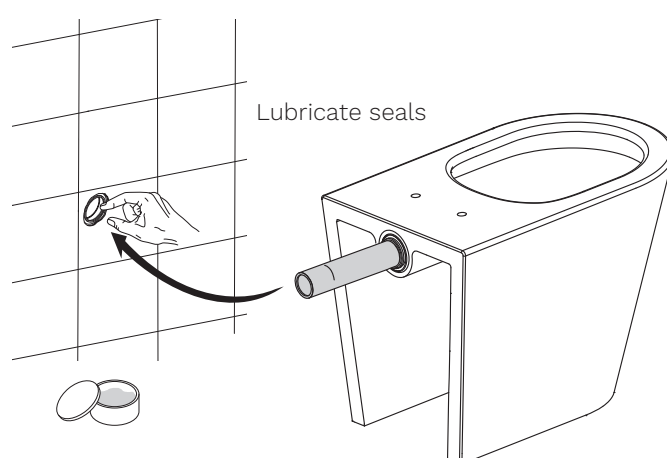
3



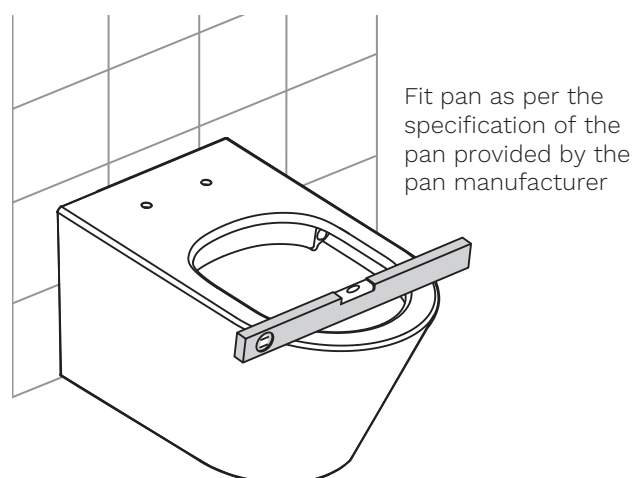
4



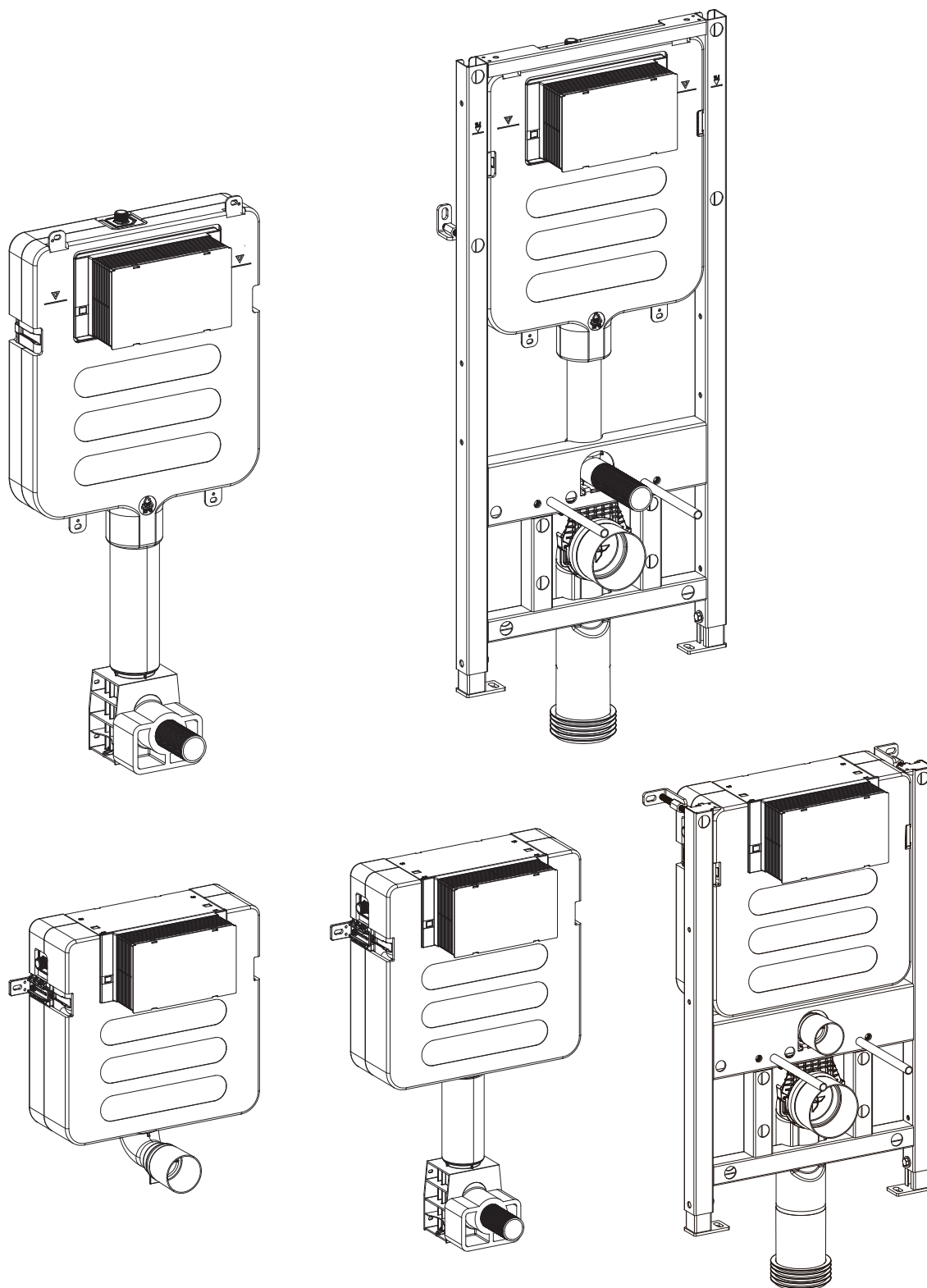
5



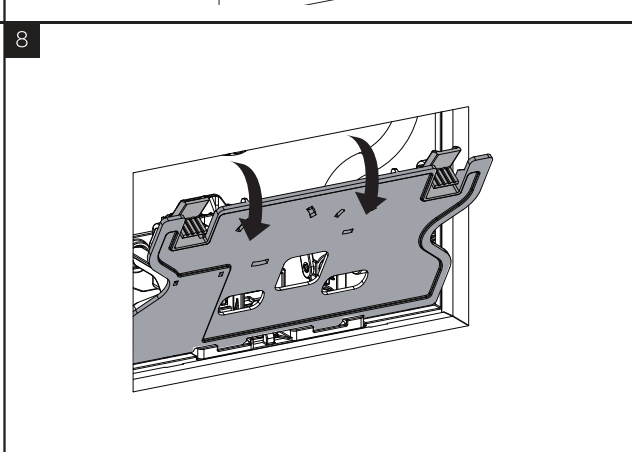
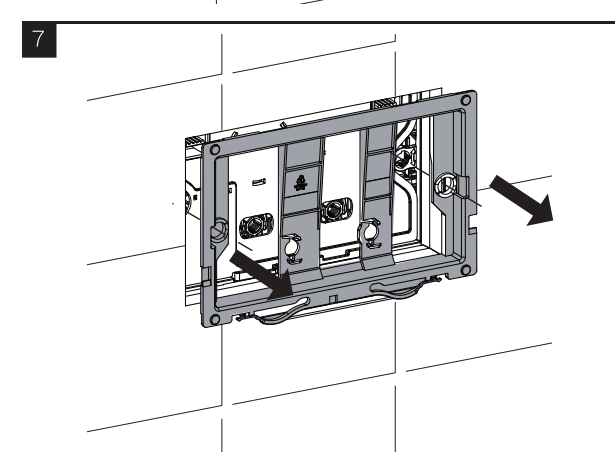
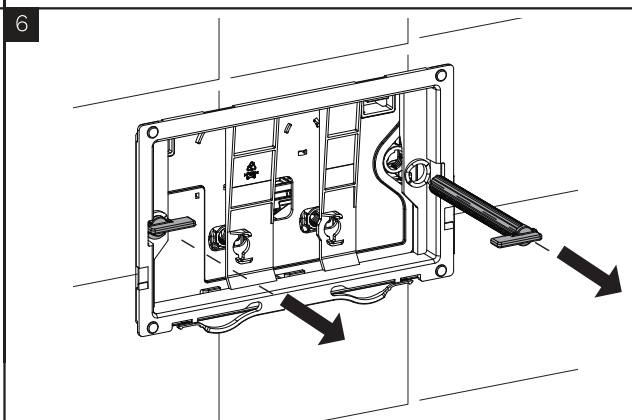
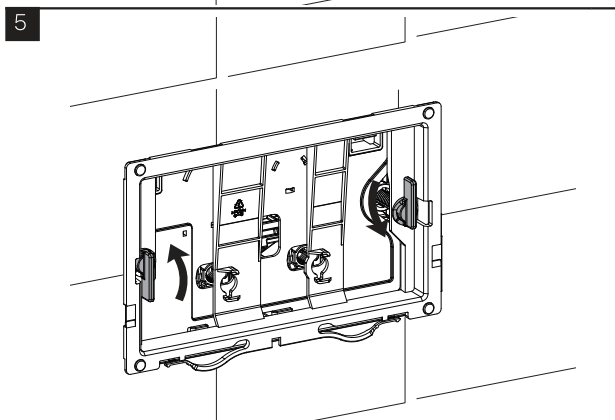
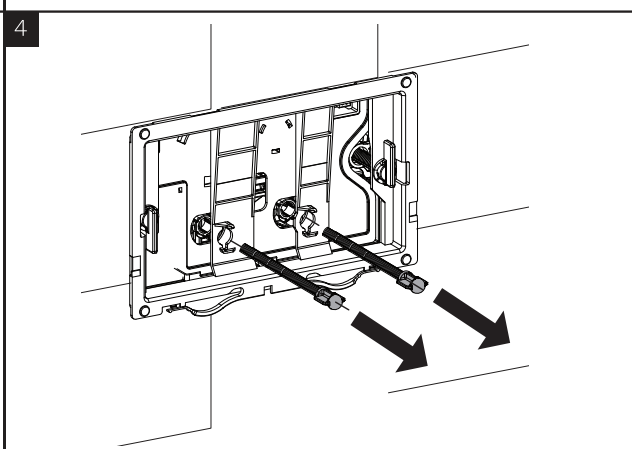
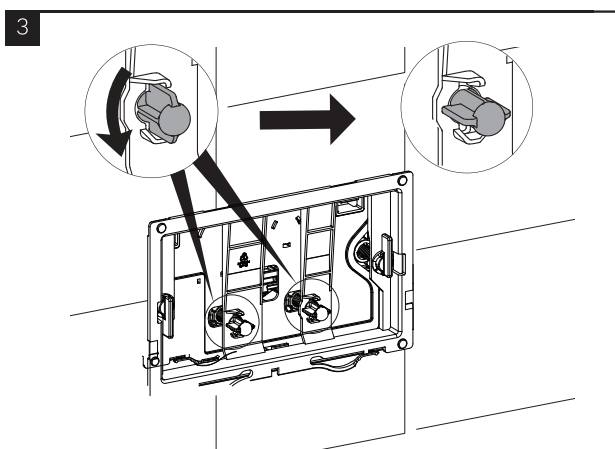
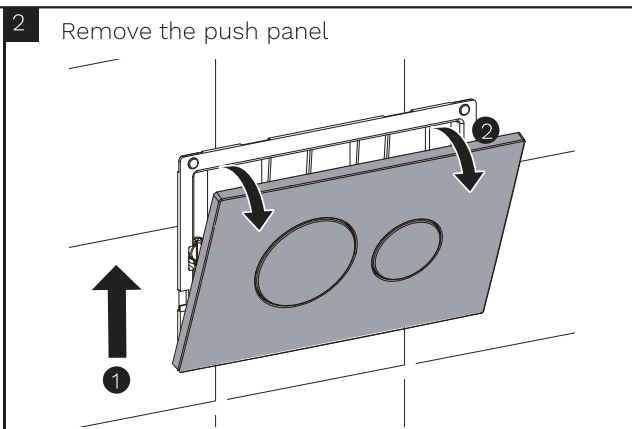
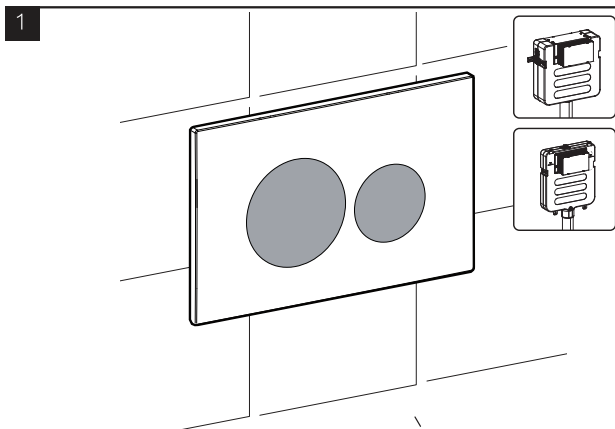
6



SERVICE SHEET

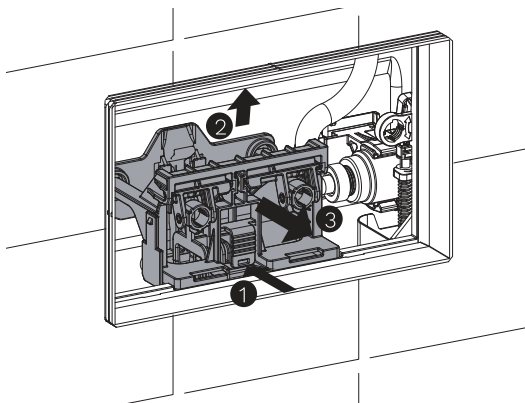


SERVICE SHEET

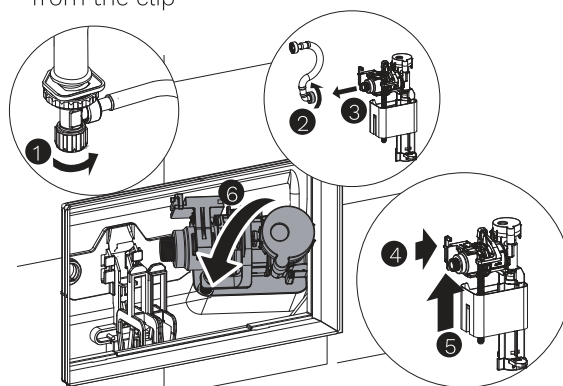


SERVICE SHEET

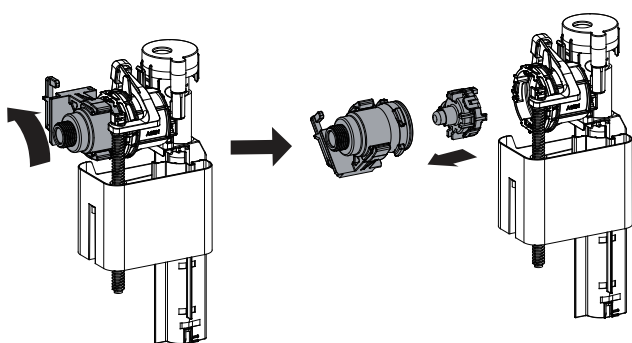
9 Remove the mechanism



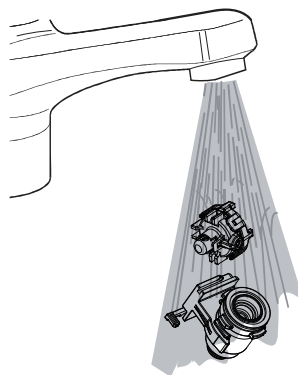
10 Turn off mini stop valve & unhook fill valve from the clip



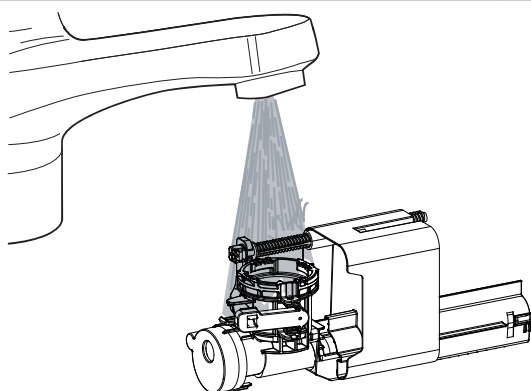
11



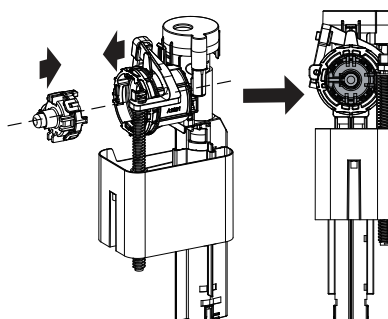
12



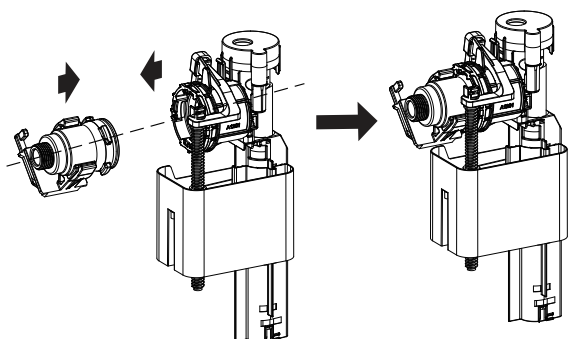
13



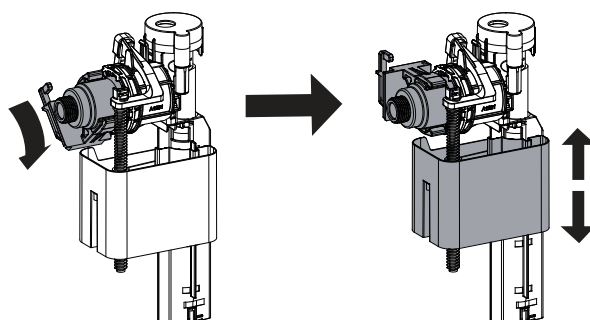
14



15 Assemble fill valve

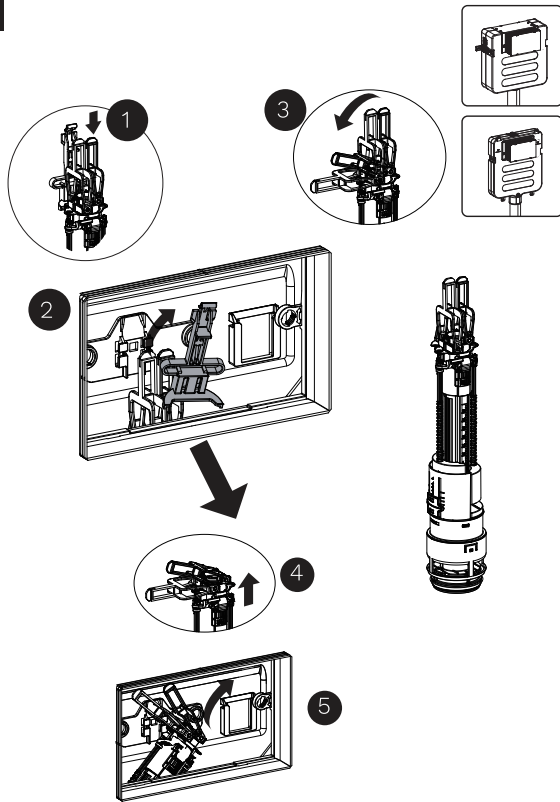


16 Check whether the float can move up and down freely



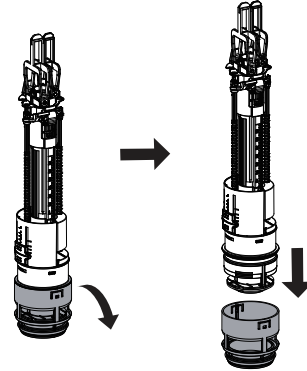
SERVICE SHEET

17

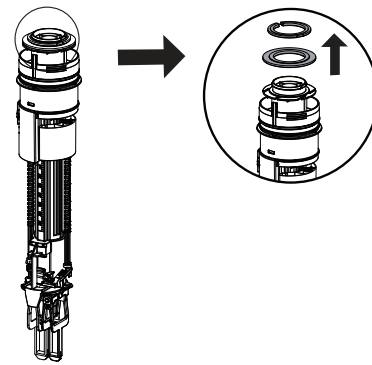


18

Dismantle the flush valve from its base

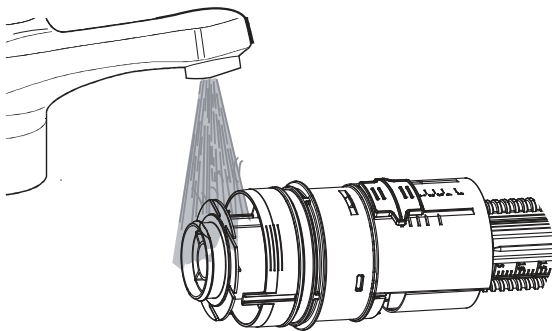


Carefully remove the seal



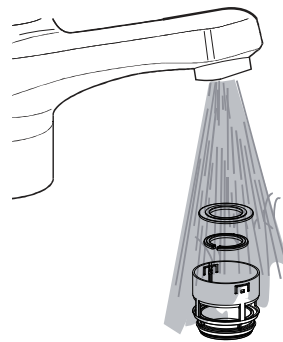
*if required, replace with new seal(SP.PA0023)

19

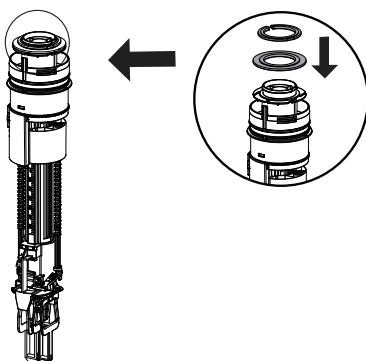


20

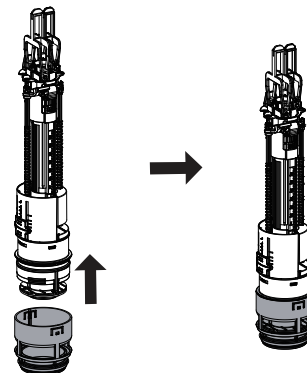
Clean the seal and flush base



21

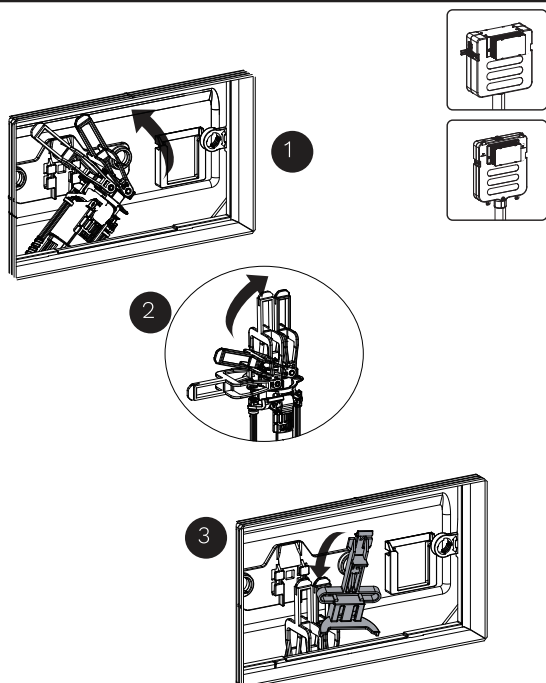


22

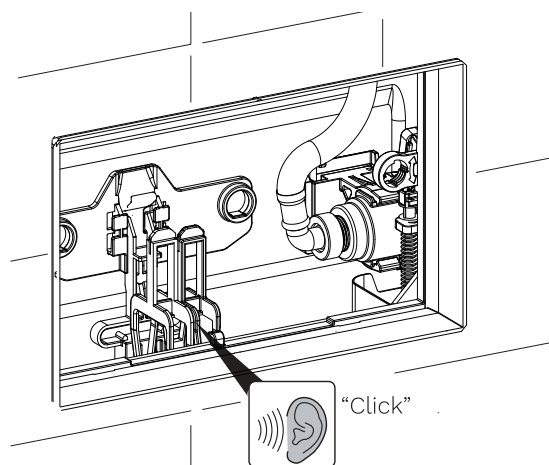


SERVICE SHEET

23

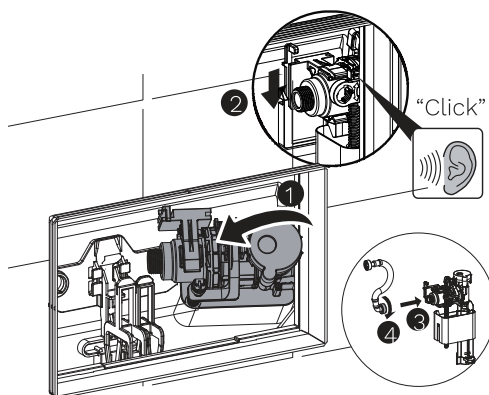


24



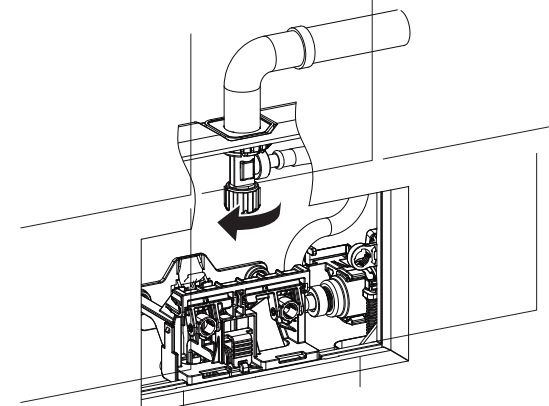
25

Put fill valve back into cistern & connect it to hose. DO NOT TURN ON THE WATER



26

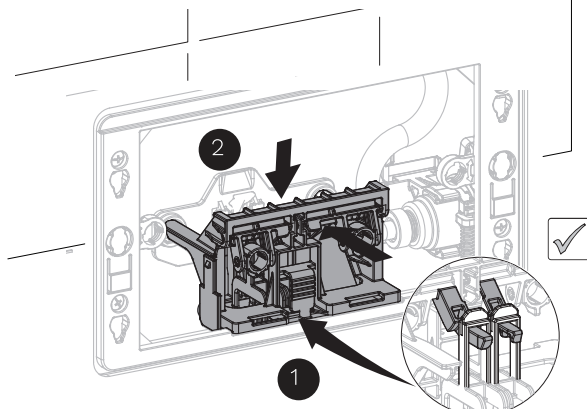
Secure the flexible hose end connections



Open mini stop valve and check for leaks

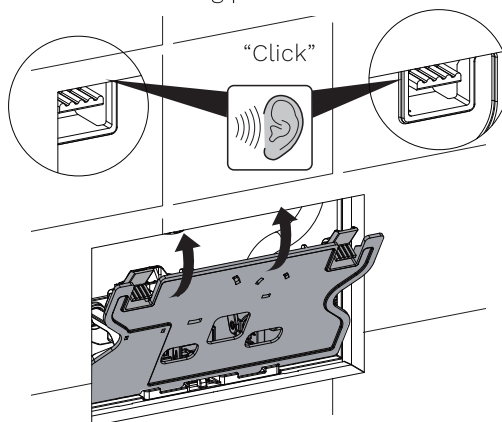
27

Assemble the drive support and put the two arms into holes



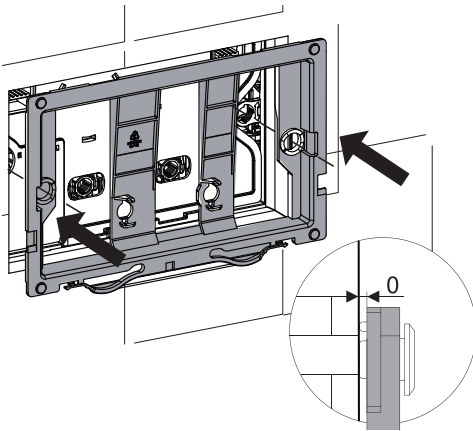
28

Assemble the fixing plate

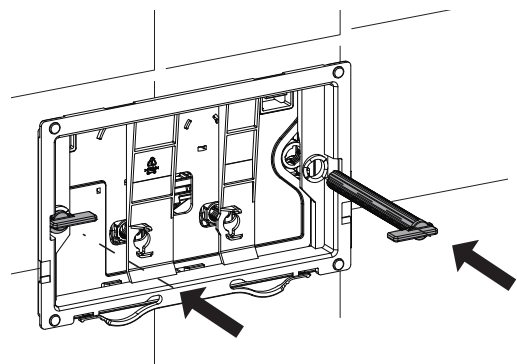


SERVICE SHEET

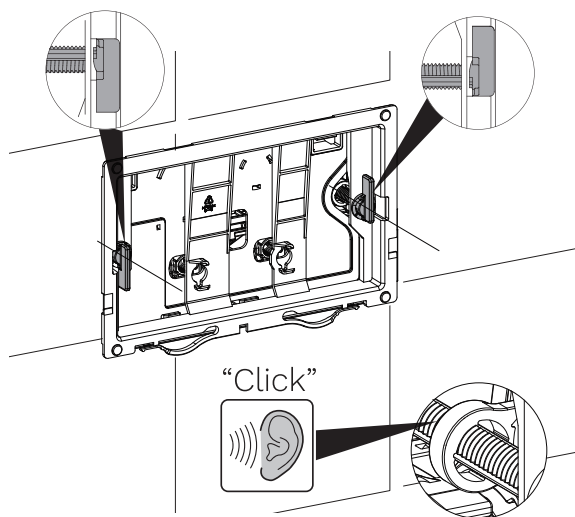
29



30

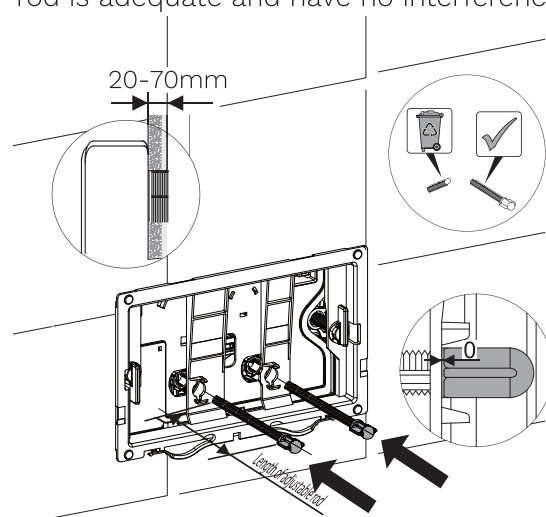


31

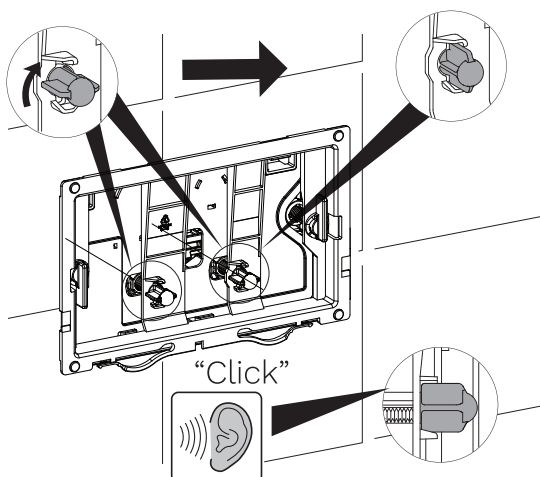


32

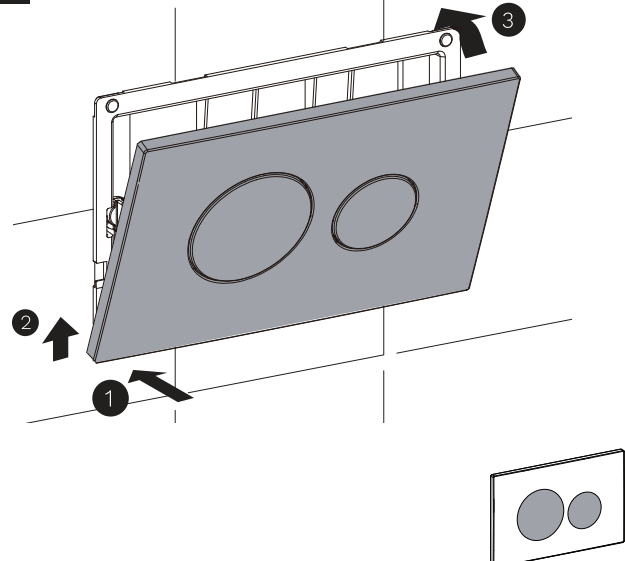
Make sure the length of adjustable rod is adequate and have no interference



33



34



WARRANTY & CARE AND MAINTENANCE

Warranty

PARISI has confidence in their products' quality and function and offer lengthy and comprehensive warranties against manufacturing defects, which are in addition to that required under Australian Consumer Law.

Refer to our website for full warranty terms and conditions:

www.parisi.com.au/pages/warranty-information

Product Care and Maintenance

We take great pride in the materials we use whilst conforming with the Australian Standards, Water Efficiency Labelling Standards (WELS) requirements.

To maintain the finish of the push panels regularly wipe over with a soft duster or cloth to remove any surface dust. Alternatively, wipe over with a dampened clean, soft cloth with soapy water and dry with a soft cotton or flannelette cloth (not a micro-fibre cloth).

Avoid any scourers, abrasives, bleach or hard chemical as these will scratch and discolour the surface of the product.

Access to the cistern internals for any servicing or maintenance is done through the push panel (slimline concealed or undercounter cisterns). Noting alternate access needs to be provided for remote-mounted buttons.

Refer to **Concealed Cistern Service Sheet** for maintenance instructions.

For required spare parts, refer to **Concealed Cistern Spare Parts**.

FAQ

Frequently asked questions

Q: Can I change the push panel after installation ?

Yes, the selection needs to stay within the PARISI offering and the appropriate spare parts will need to be purchased to ensure compatibility with the chosen cistern.

*Refer to **Concealed Cistern Spare Parts**.*

Q: What is the load capacity for the wall-hung cistern with Frame?

PARISI preassembled framed cisterns are designed to support up to 400kgs as per Australian Standards.

Q: How do you access the cistern internally for service and maintenance?

Access to the cistern internals for any servicing or maintenance is done through the push panel (slimline concealed or undercounter cisterns). Noting alternate access needs to be provided for remote-mounted buttons.

*Refer to **Concealed Cistern Service Sheet** for maintenance instruction.*

Q: What is the difference between Mechanical and Pneumatic?

Mechanically operated cisterns are always the first choice due to their reliability and ease of service. This is where the buttons are directly connected to the flushing mechanism (outlet Valve), whereas pneumatic operation relies on bellows connected via hoses attached to the button to activate the flushing mechanism.

Q: Do PARISI cisterns work with other supplier's pans?

PARISI pans have been tested and certified with our cisterns to ensure correct flushing performance.

Whilst our cistern can work with non-PARISI pan we can not guarantee optimal performance.

Q: Can your buttons and cisterns be used with another supplier's cistern or button?

PARISI buttons are only compatible with our cisterns.

Q: What is the depth of your cistern for installation in a stud wall?

*Our slimline concealed cistern is 88mm deep and suitable for a traditional 90mm stud wall.
Our slimline concealed cistern is 145mm deep and suitable for a traditional 160mm stud wall.*

Q: Can I purchase spare parts?

*Spare parts can be purchased through our specified retailer. For all spare part refer to **Concealed Cistern Spare Parts**.*

FAQ

Trouble Shooting

Q: My push panel isn't working. What is causing this and how can it be fixed?

If the cistern is pneumatic and buttons are hard to depress, then it's likely that the hoses are twisted preventing the air from freely flowing down the hose to the bellows on the outlet valve.

Again, if the cistern is pneumatic and the buttons are easy to depress but no flushing occurs then there are likely perforations or minor cuts in the hose preventing actuation of the outlet valve.

If the cistern is mechanical and the button is hard to depress and/or does not depress all the way back, then the flushing rods need to be cut to the adequate length.

If the cistern is mechanical and the buttons are easy to depress but no flushing occurs, then the flushing rods are too short. Refer to installation instructions.

Q: Water keeps running into the pan. What's causing this and how can it be fixed?

If water is continuously running into the pan, then this means that the outlet valve is not sealing correctly. Remove the outlet valve to ensure that there is no debris or obstruction within the cistern tank. Also, check the outlet valve seal to ensure that this is clean and smooth. Return the valve to its original position.

*Refer to **Concealed Cistern Service Sheet***

Q: The inlet valve is continuously running. How can this be fixed?

*If the inlet valve is not shutting off, then this is due to one of two factors. Either there is debris in the diaphragm preventing a water seal, or the float is not lifting adequately. The suggestion is to remove the inlet valve, check and clean as prescribed in the **concealed cistern service sheet**.*