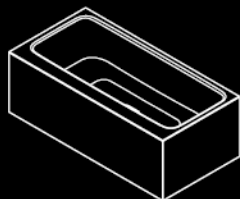


MEISTERSTÜCK

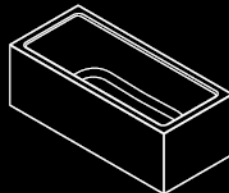
ASYMMETRIC DUO



CENTRO DUO OVAL



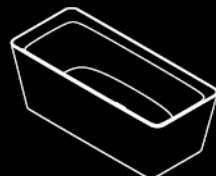
CONODUO



EMERSO



INCAVA



CLASSIC DUO OVAL



2

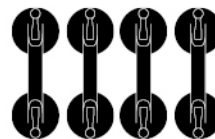
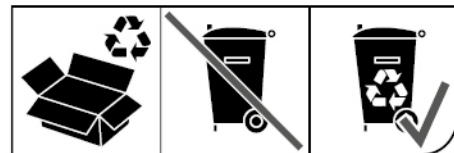
DE Montageanleitung | EN Installation instructions

NL Montagehandleiding | FR Instructions de montage | IT Istruzioni di montaggio
ES Instrucciones de montaje | PT Instruções de montagem | DA Monteringsvejledning
NO Monteringsanvisning | SV Monteringsanvisning | FI Asennusohje | ET Paigaldusjuhised
LV Montāžas instrukcija | LT Montavimo instrukcija | PL Instrukcja montażu | CS Návod k montáži
RU Инструкция по монтажу | UK Інструкція з монтажу | SK Návod na montáž | HU Összeszerelési utasítás | RO Instrucțiuni de montare | SL Navodila za montažo | HR Upute za montažu
BG Ръководство за монтаж | EL Οδηγίες συναρμολόγησης | TR Montaj talimatı | AR بيكرتلا ليلد
ZH 安装说明书 | JA 設置説明書 | KO 조립설명서 | ID Petunjuk perakitan | TH คำแนะนำในการติดตั้ง
VI Hướng dẫn lắp ráp | HI स्थापना निर्देश

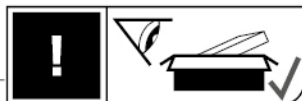
1.



2.



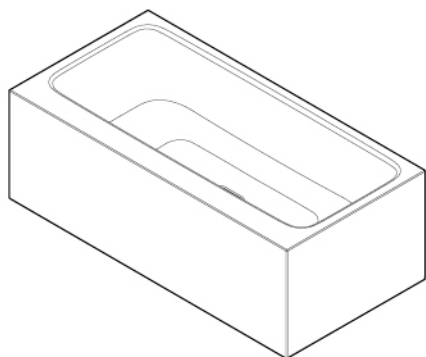
13 KBW 001



ASYMMETRIC DUO

1740

1742



CENTRO DUO OVAL

1127

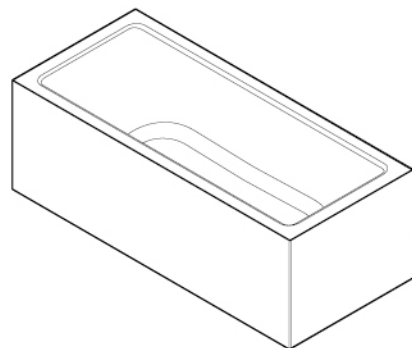
1128



CONODUO

1732

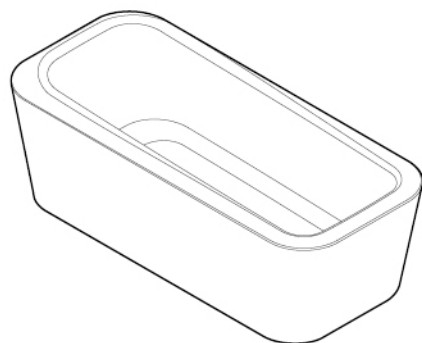
1733





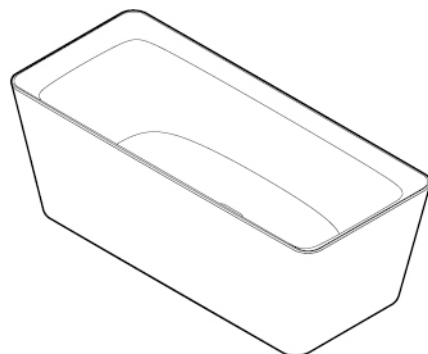
EMERSO

1100



INCAVA

1174



MEISTERSTÜCK

CLASSIC DUO OVAL

1111

1113

1112



616202

616201

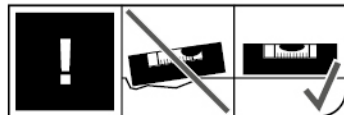
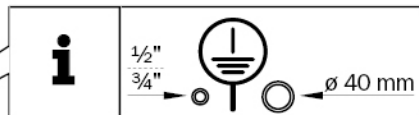
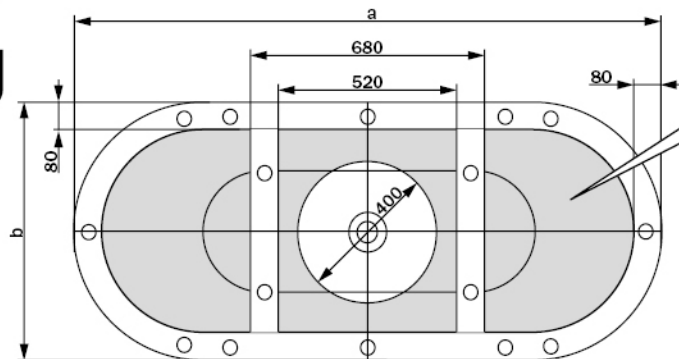
616102

616101





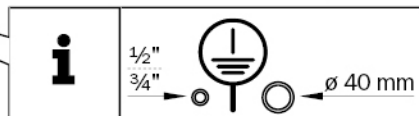
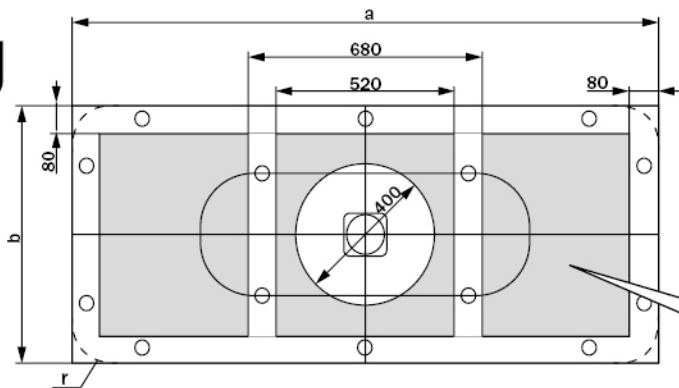
A

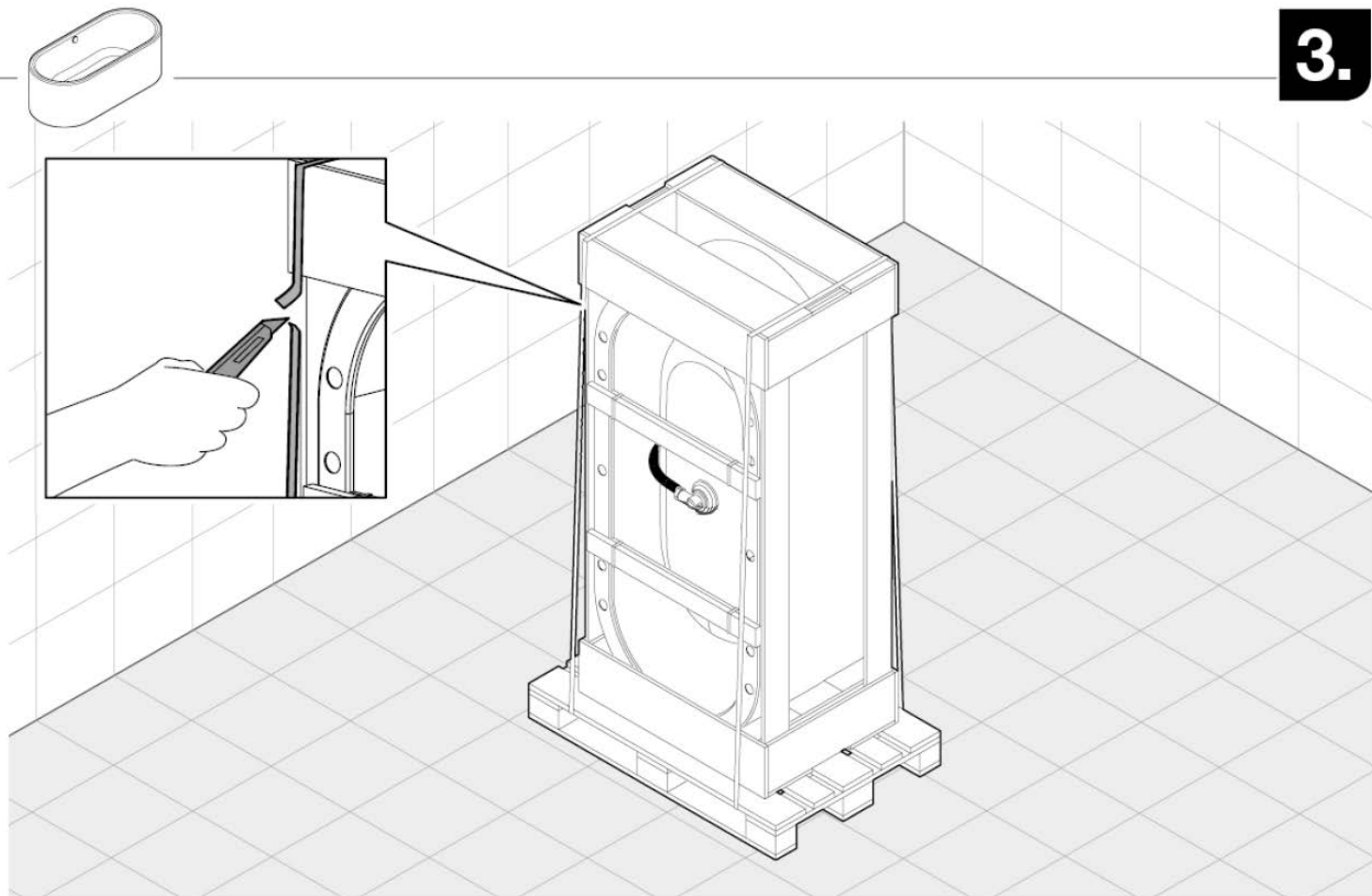


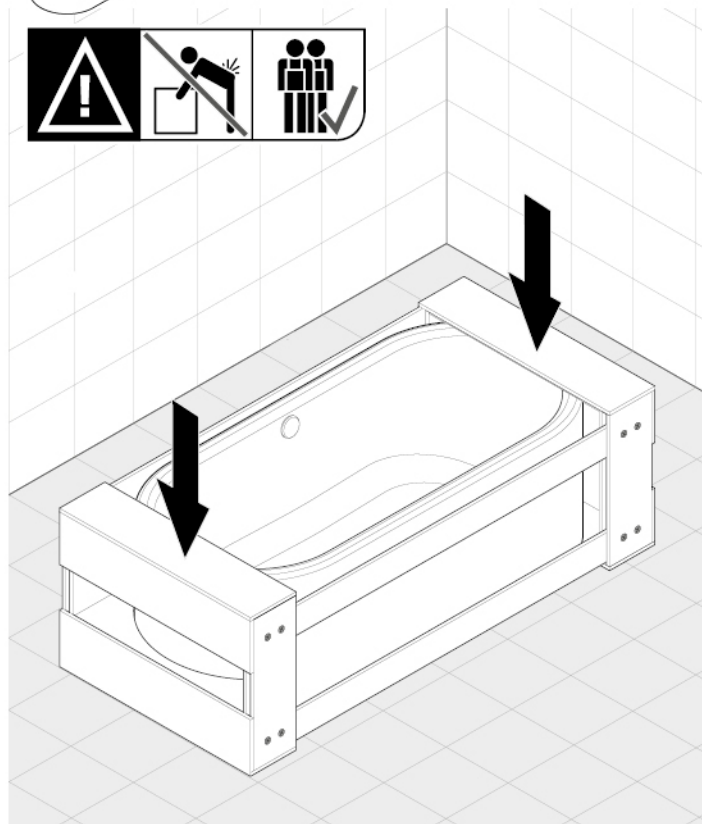
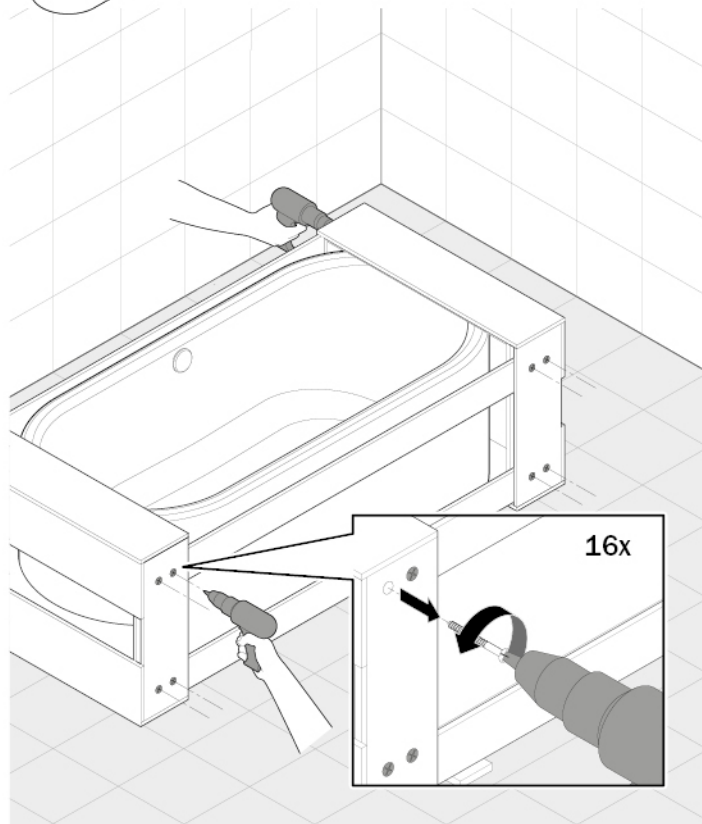
	a mm	b mm	r mm
1740	1700	800	-
1742	1800	900	-
1127	1700	750	375
1128	1800	800	400
1732	1700	750	-
1733	1800	800	-
1100	1600	710	200
1174	1493	643	80
1113	1418	643	321,5
1111	1518	693	346,5

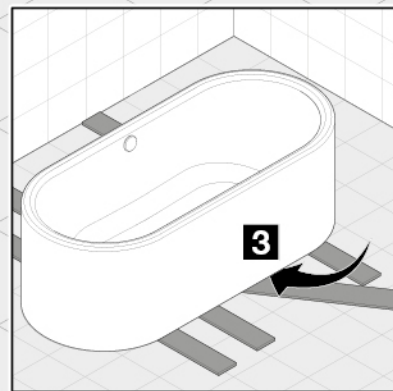
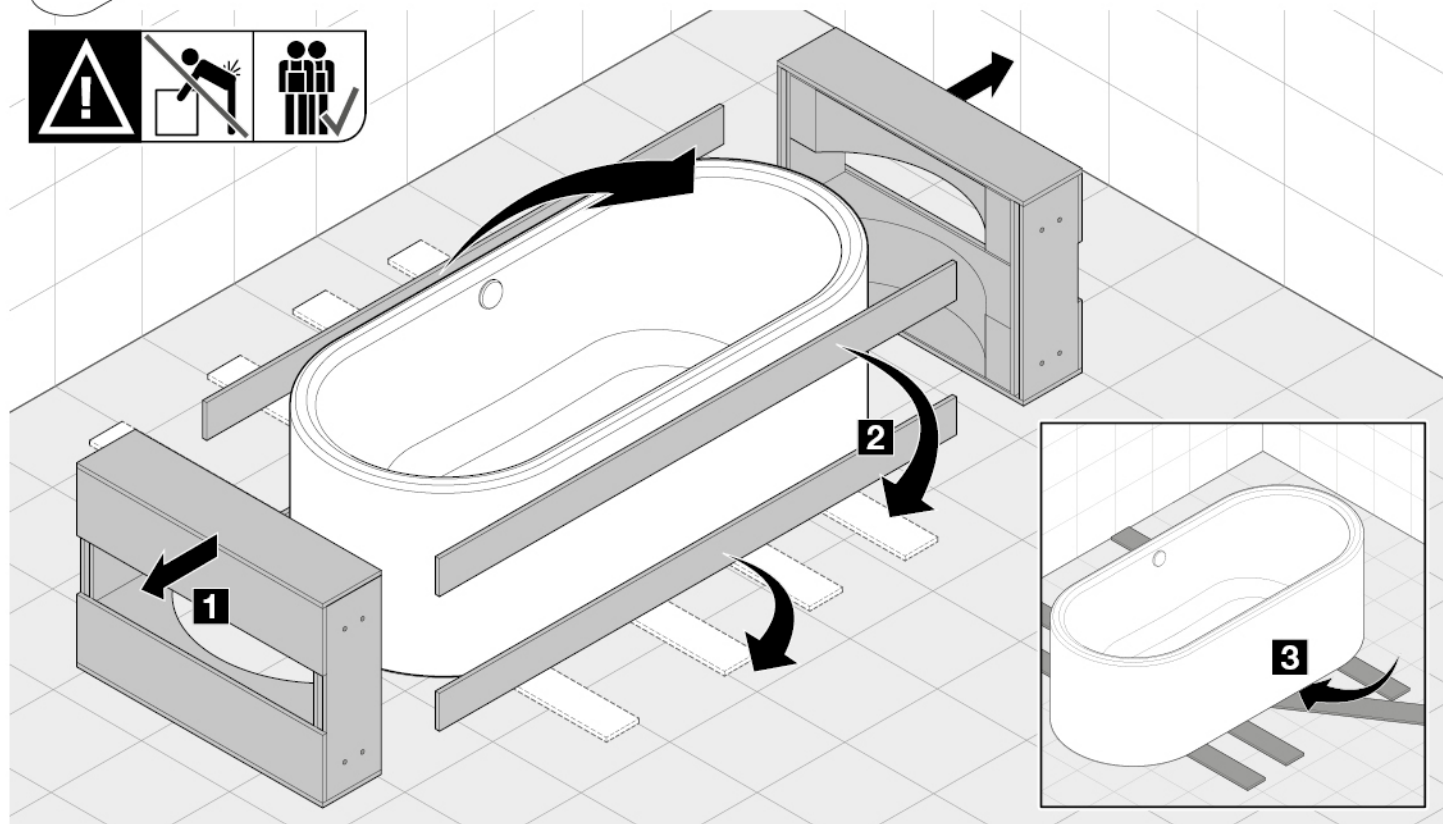
Inch = mm x 0,0394

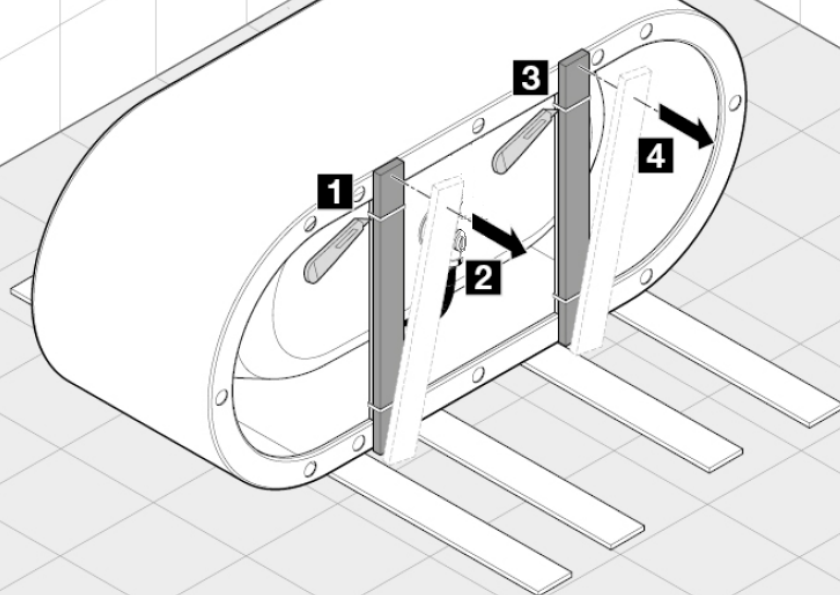
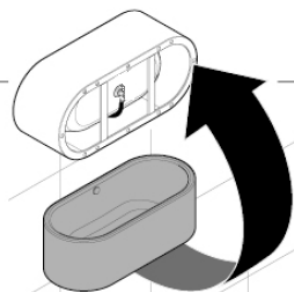
B





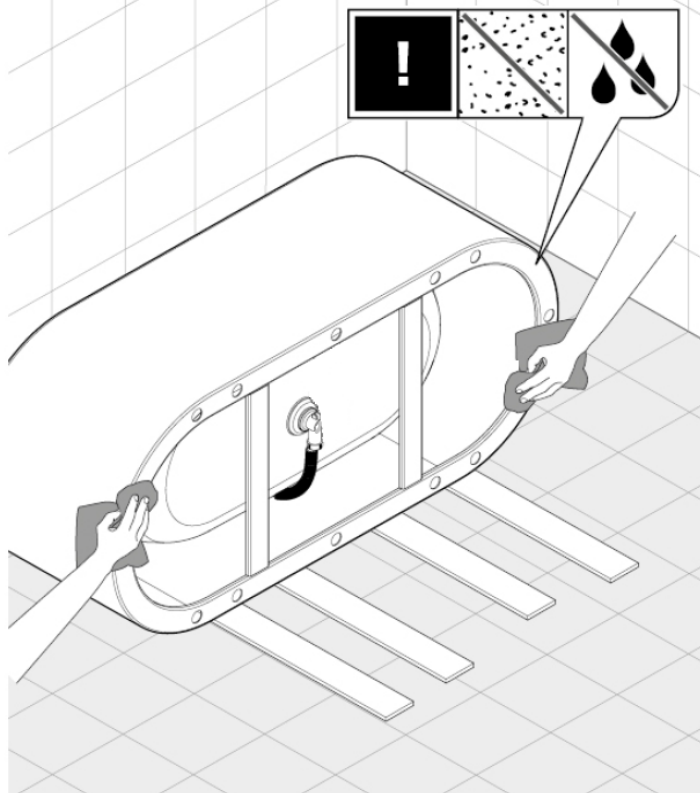
**4.****5.**



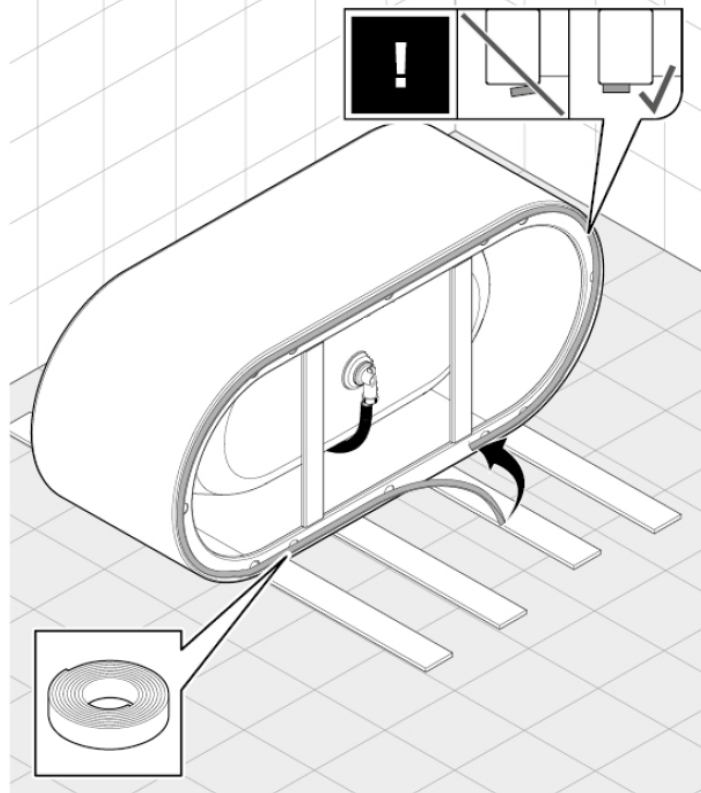


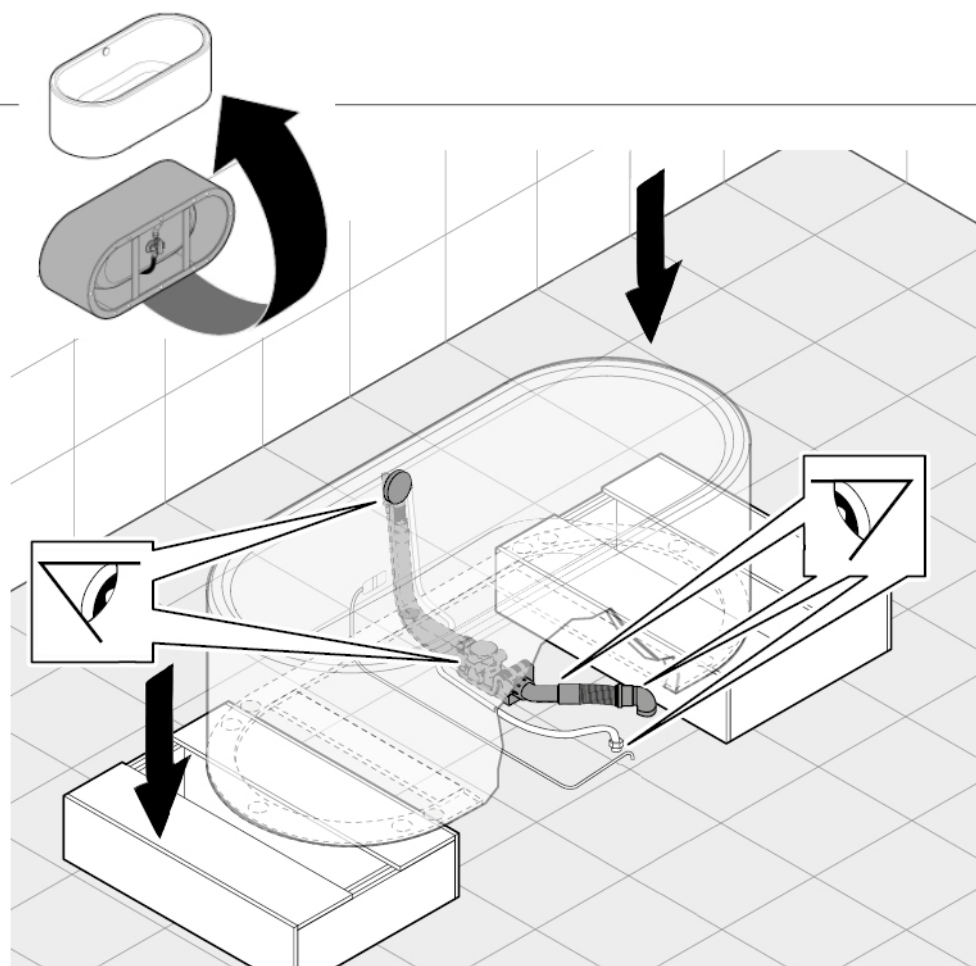


8.

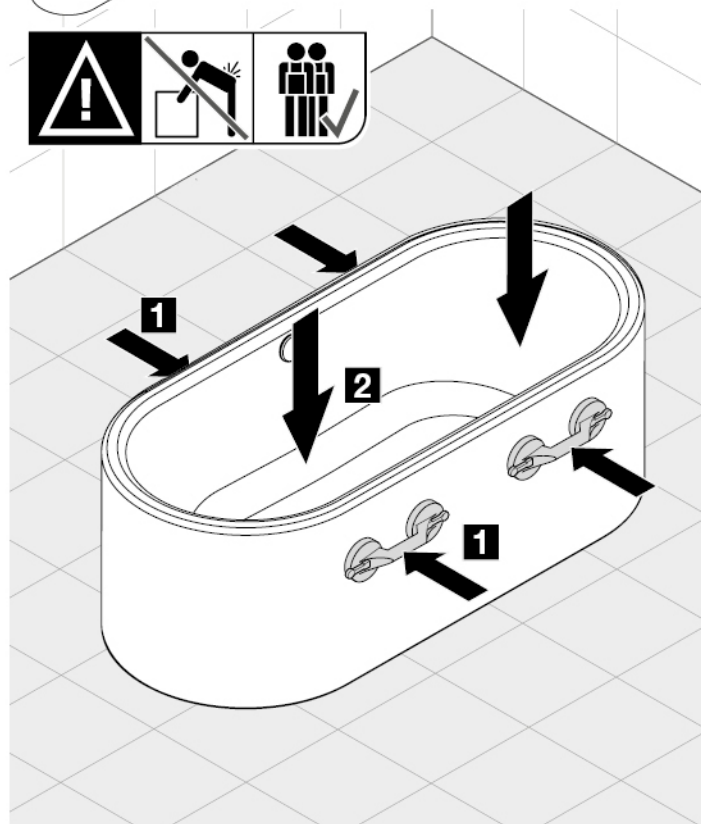
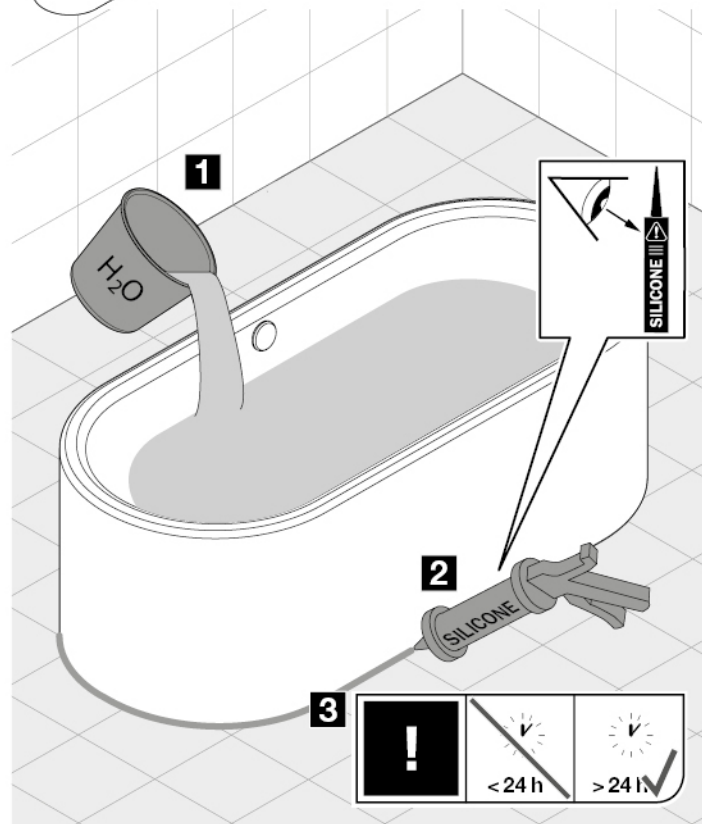


9.

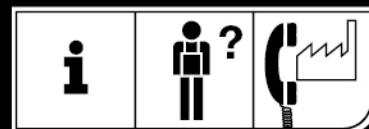




****THE WASTE FITTINGS PICTURED ARE NOT APPLICABLE IN AUSTRALIA. PLEASE SEE PAGE 15 FOR AU APPROVED OVERFLOW AND WASTE FITTINGS.**

**11.****12.**


KALDEWEI



Franz Kaldewei GmbH & Co. KG

Beckumer Str. 33-35

D-59229 Ahlen

 +49 2382 785 0

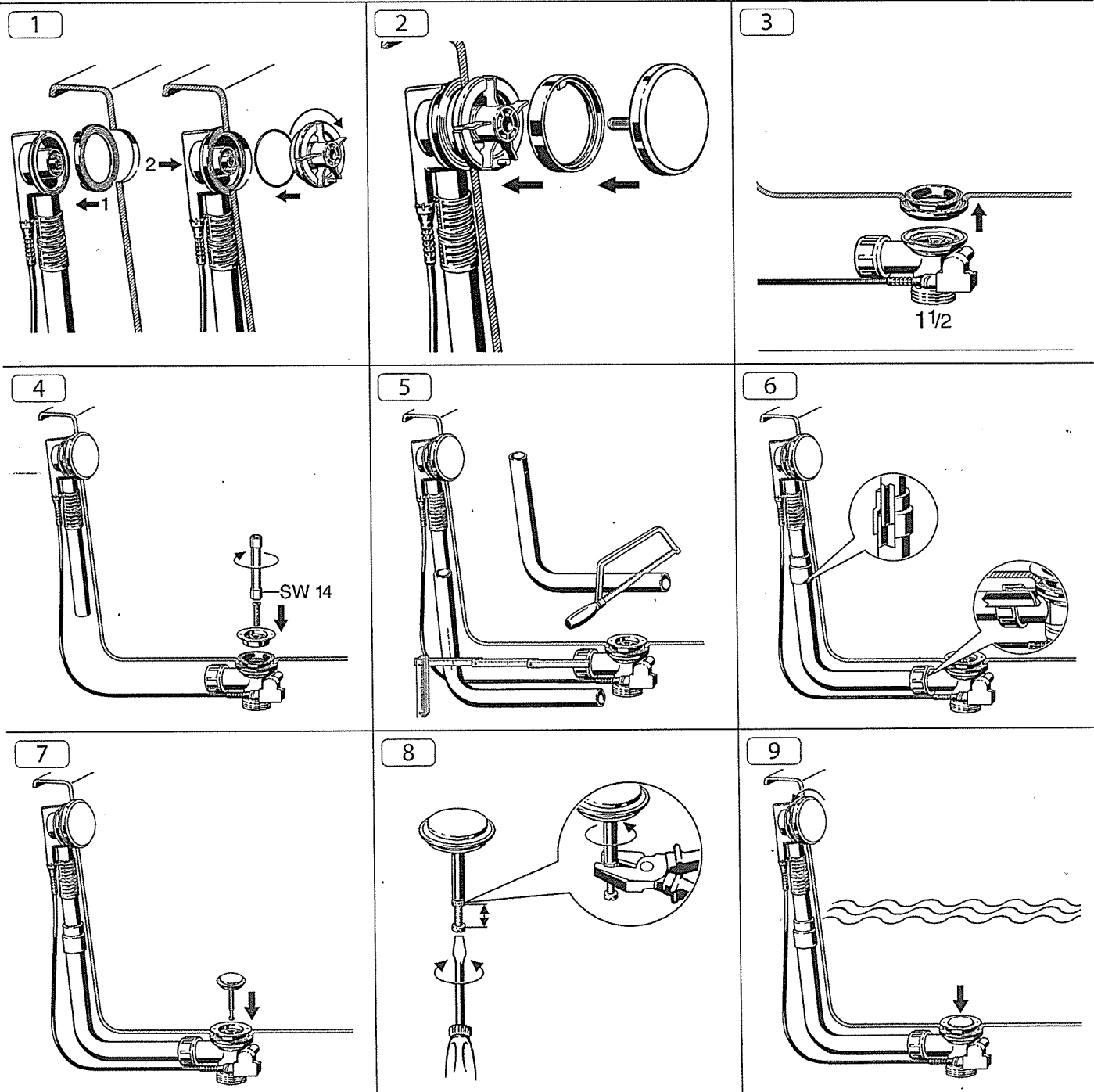
 +49 2382 785 200

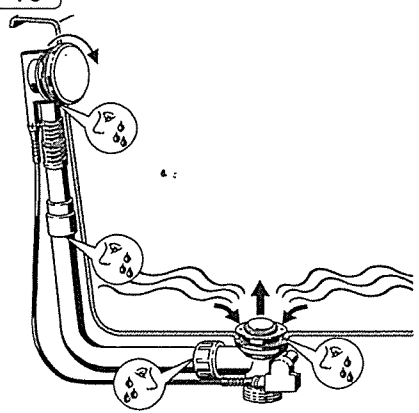
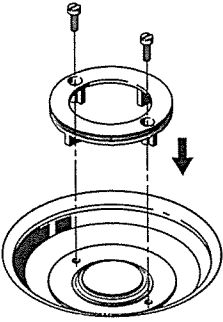
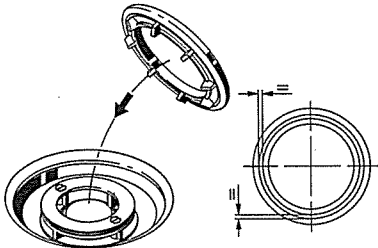
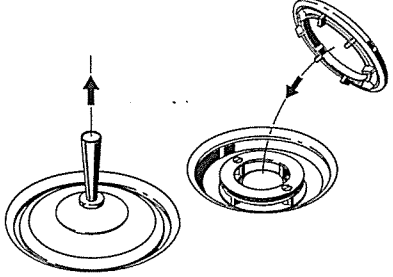
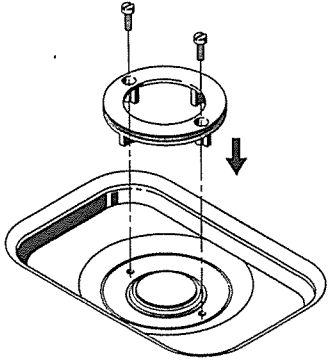
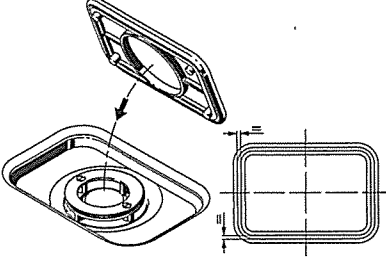
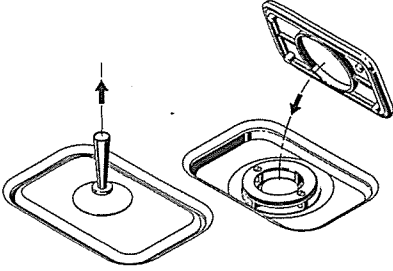
www.kaldewei.com



AUSTRALIA APPROVED
WASTE AND OVERFLOW
FITTINGS

EINBAUANLEITUNG / INSTALLATION INSTRUCTIONS AB- UND ÜBERLAUFGARNITUR / DRAIN AND OVERFLOW FITTINGS MOD. KA 4040 AUSTRALIA MOD. KA 4060 AUSTRALIA MOD. KA 4080 AUSTRALIA



<p>10</p> 		
<p>11a</p> <p>4040</p> 	<p>12a</p> <p>4040</p> 	<p>13a</p> <p>4040</p> 
<p>11b</p> <p>4060</p> 	<p>12b</p> <p>4060</p> 	<p>13b</p> <p>4060</p> 

EINBAUANLEITUNG / INSTALLATION INSTRUCTIONS AB- UND ÜBERLAUFGARNITUR MIT INTEGRIERTEM EINLAUF/ DRAIN AND OVERFLOW FITTINGS WITH INTEGRATED INLET

MOD. KA 4041 AUSTRALIA

MOD. KA 4061 AUSTRALIA

MOD. KA 4081 AUSTRALIA

