

SCHOCK



CONOS PRO
528006EDM/A



www.schock.de/en/easy-conospro





PRODUKTMERKMALE

PRODUCT SPECIFICATIONS



Anschluss Schlauchlänge
Length of supply hoses



Gewindegröße Anschluss Schlauch
Thread size of supply hose



Schwenkbereich
Swivel range



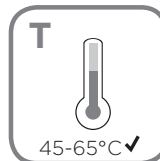
Seitenbrause
Sidespray



Anschluss Schlauchlänge Seitenbrause
Sidespray length of supply hoses



Wasserdruck
Water pressure



Temperatur
Temperature



Wasserdurchlaufmenge
Water flow rate





SCHOCK

SICHERHEITSHINWEISE
SAFETY NOTES

- DEU** **DIE GEWÄHRLEISTUNG VERFÄLLT BEI LAIENMONTAGE.
SCHOCK EMPFIEHLT DIE VERWENDUNG DES GROBPARTIKELFILTERS SF-100 (629883).
KEINEN CHLORREINIGER VERWENDEN.**
- ENG** **THE WARRANTY IS VOIDED BY NON-PROFESSIONAL INSTALLATION.
SCHOCK RECOMMENDS THE USE OF THE SF-100 (629883) COARSE PARTICLE FILTER.
DO NOT USE CHLORINE-BASED CLEANING AGENTS.**
- ES** **LA GARANTÍA CADUCA CUANDO EL MONTAJE NO ES REALIZADO POR PERSONAL ESPECIALIZADO.
SCHOCK RECOMIENDA LA INSTALACIÓN DEL FILTRO CONTRA PARTÍCULAS GRUESAS SF-100 (629883).
SE ADVIERTE NO UTILIZAR DETERGENTES QUE CONTENGAN CLORO.**
- TR** **YETKILI KİŞILERCE YAPILMAYAN MONTAJLARDA GARANTI GEÇERSİZ SAYILACAKTIR.
SCHOCK SF-100 (629883) KALIN PARÇACIK FİLTRESİNİ KULLANMANIZI ÖNERİR.
ASLA KLORLU TEMİZLEYİCİLER KULLANMAYINIZ.**
- POL** **GWARANCJA TRACI WAŻNOŚĆ W PRZYPADKU NIEWŁAŚCIWEGO MONTAŻU. SCHOCK ZALECA UŻYCIE
ZAWORU KĄTOWEGO Z FILTREM SF-100 (629883). NIE STOSOWAĆ ŚRODKÓW NA BAZIE CHLORU.**
- RUS** **ГАРАНТИЯ РАСПРОСТРАНЯЕТСЯ НА СМЕСИТЕЛИ УСТАНОВЛЕННЫЕ КВАЛИФИЦИРОВАННЫМ САНТЕХНИКОМ.
SCHOCK РЕКОМЕНДУЕТ ИСПОЛЬЗОВАТЬ ФИЛЬТР ГРУБОЙ ОЧИСТКИ SF-100 (629883).
НЕ ИСПОЛЬЗОВАТЬ ХЛОРСОДЕРЖАЩИЕ ЧИСТЯЩИЕ СРЕДСТВА.**



WERKZEUGE TOOLS



19 mm
23 mm
36 mm

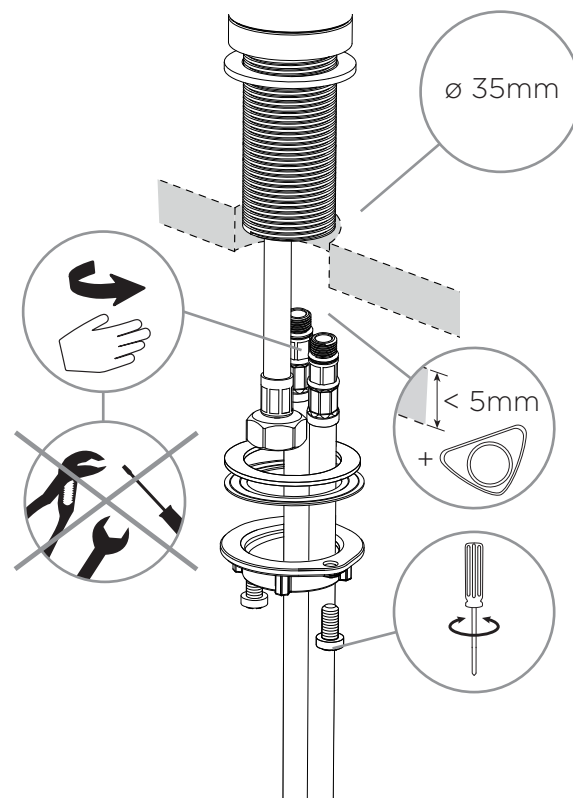


INSTALLATION INSTALLATION

1

Anschlusschläuche handfest anziehen

Hand - tighten supply hoses





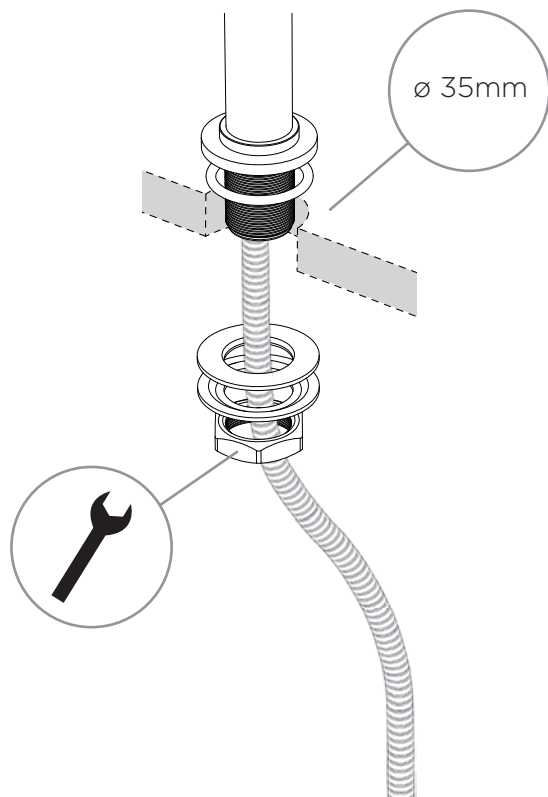
INSTALLATION INSTALLATION

2



Anschlusschläuche handfest anziehen

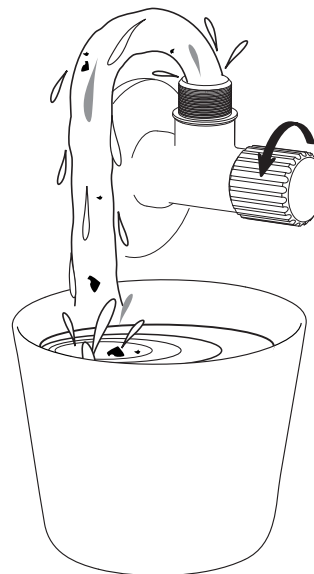
Hand - tighten supply hoses



3

Eckventile vor der Installation gründlich ausspülen

Flush piping system before installation of fitting thoroughly



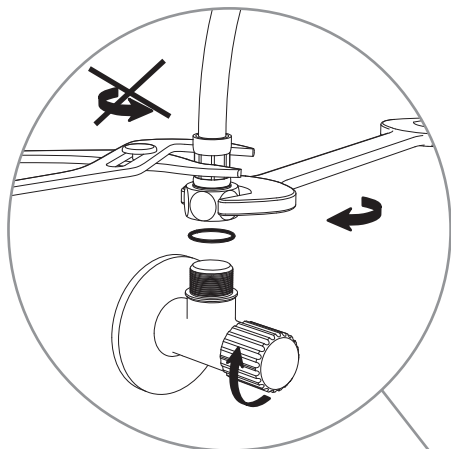


INSTALLATION INSTALLATION

4

Anschlusschläuche an Eckventile anschrauben

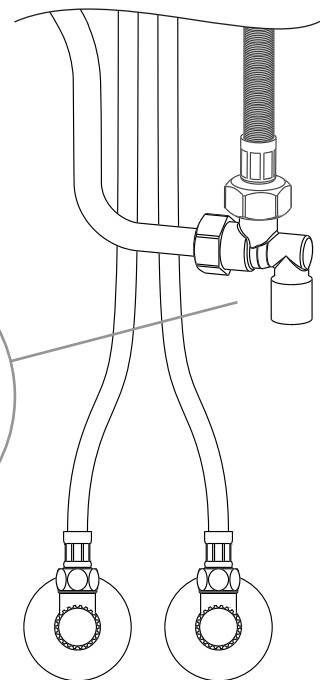
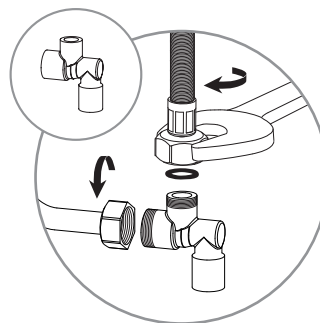
Screw supply hoses onto angle valves



5

Fest anziehen

Tighten





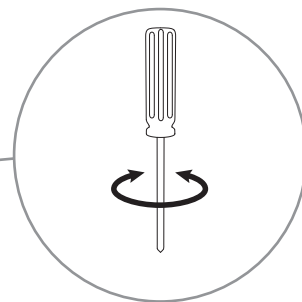
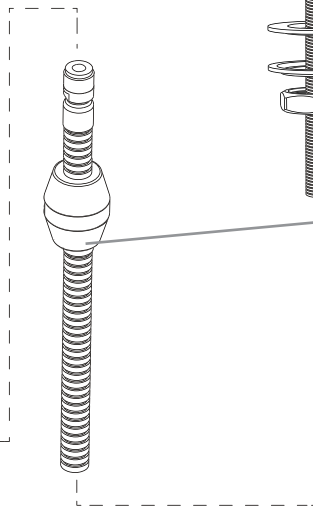
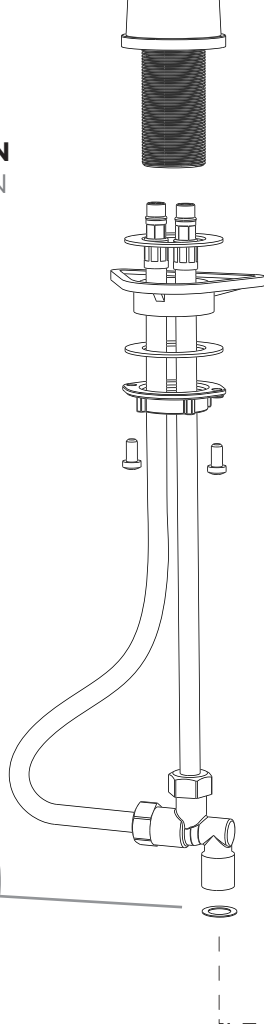
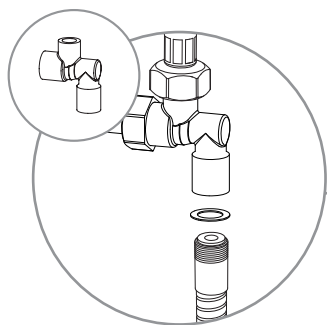
INSTALLATION INSTALLATION

5



Fest anziehen

Tighten



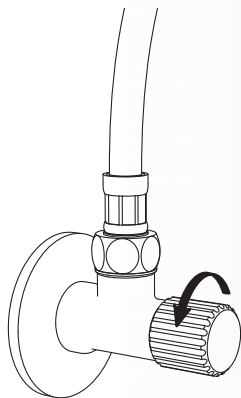


INSTALLATION INSTALLATION

6

Eckventile öffnen

Turn on water supplies and check connections for leaks







WERKZEUGE TOOLS



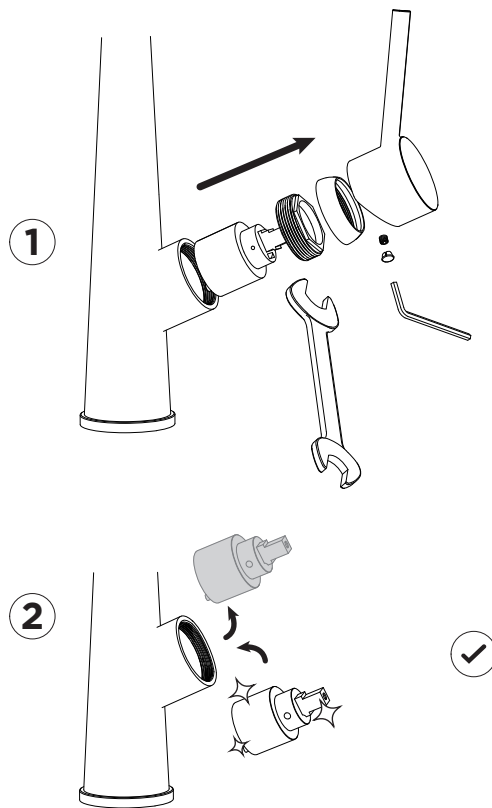
2,5 mm



30 mm



KARTUSCHENWECHSEL CHANGING THE CARTRIDGE





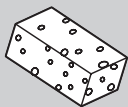
WEBSHOP



WWW.SCHOCK.DE/SHOP

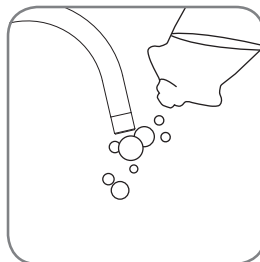


PFLEGEPRODUKTE
CARE PRODUCTS

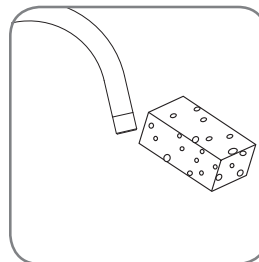


PFLEGEHINWEISE
CARE INSTRUCTIONS

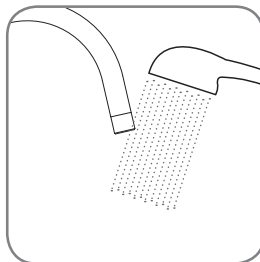
1.



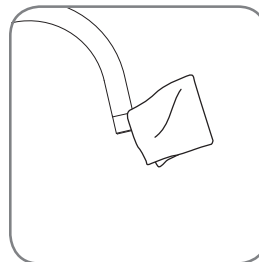
2.



3.



4.



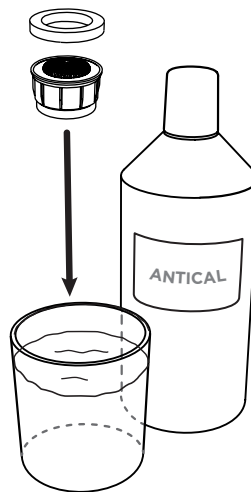
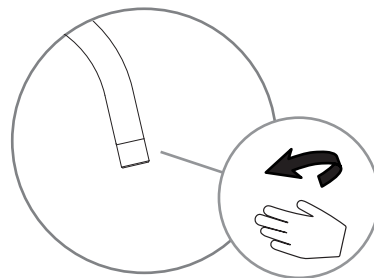


WERKZEUGE TOOLS

Kein Werkzeug benötigt
No tools needed



PERLATORREINIGUNG CLEANING THE AERATOR



60 min



ERSATZTEILE SPARE PARTS

1 628741/1

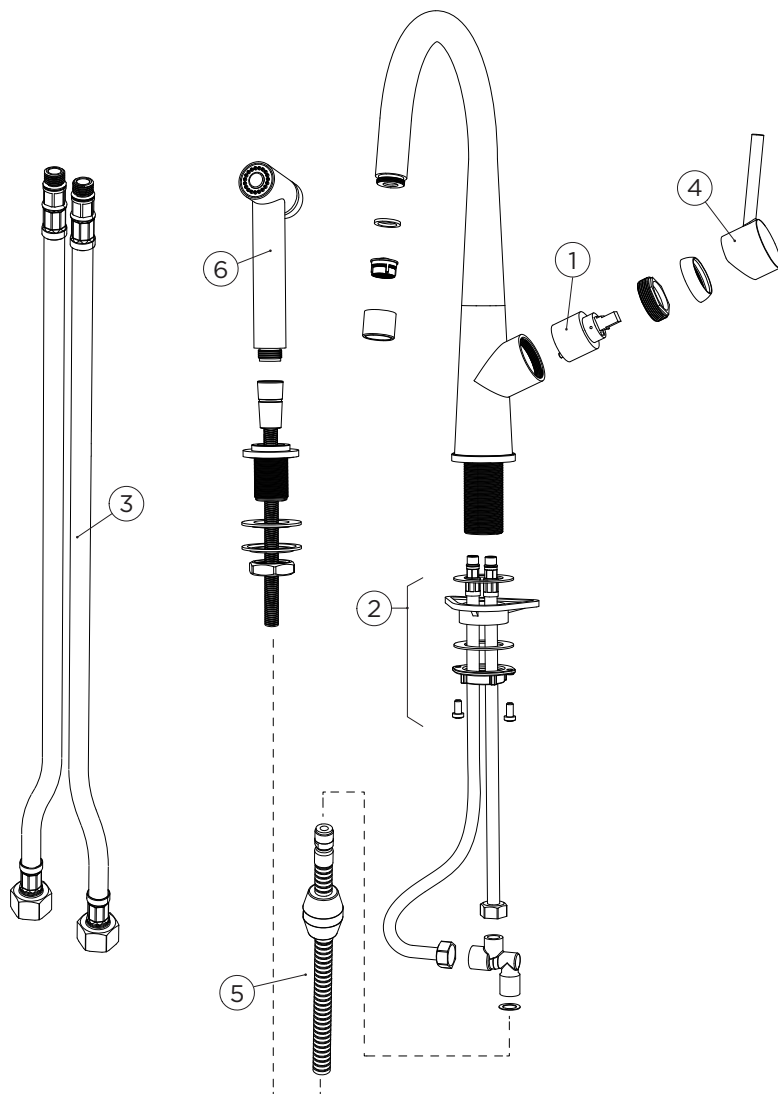
2 628740/2

3 628740/3

4 628783EDM

5 628740/5

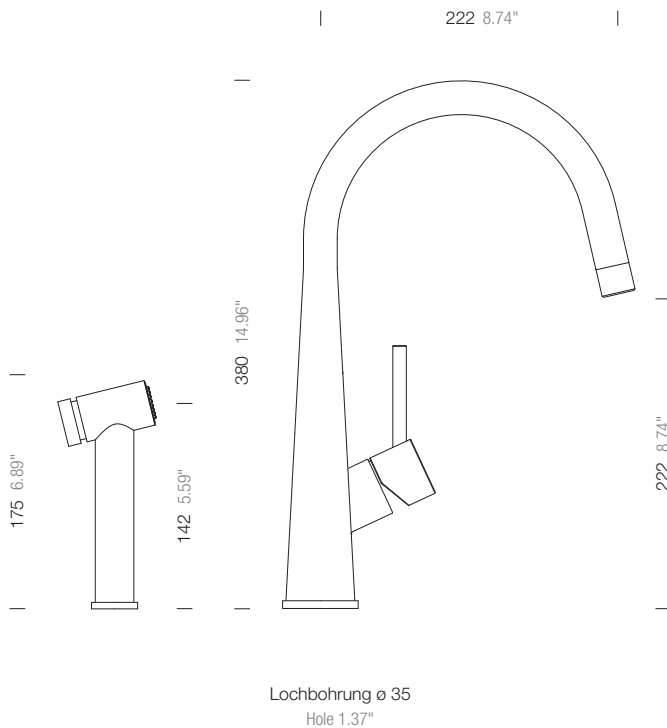
6 628740/3





MASSE
MEASUREMENTS

SCHOCK





www.schock.de/en/service



www.schock.de/en/shop

SCHOCK GmbH • Hofbauerstr. 1 • D-94209 Regen
Telefon: +49-9921-600-0 • Fax: +49-9921-600-253

Email: info@schock.de • www.schock.de