

**AXOR Showers/Front**  
**Overhead shower 240 2jet with ceiling connector**  
 Surfaces: **Chrome**    Article Number: **26022000**

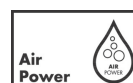


## Description

### product features

- shower head size: 279 mm
- overhead shower angle adjustable
- spray type: Rain, RainAir
- maximum flow rate at 0.3 MPa: 17 l/min
- flow rate Rain spray (at 0.3 MPa): 17 l/min
- flow rate RainAir spray (at 0.3 MPa): 16 l/min
- Select button on overhead shower
- fully chrome-plated spray disc
- material spray disc: metal
- spray disc removable for cleaning
- brass ceiling connector
- ceiling connection length: 280 mm
- installation: ceiling
- connection thread G ½
- connection dimension: DN15
- suitable for continuous flow water heaters with an output of 18 kW
- ACS 18 ACC LY 731, valide jusqu'au 02.07.2023
- WRAS 1609078

## Technology



## Design awards



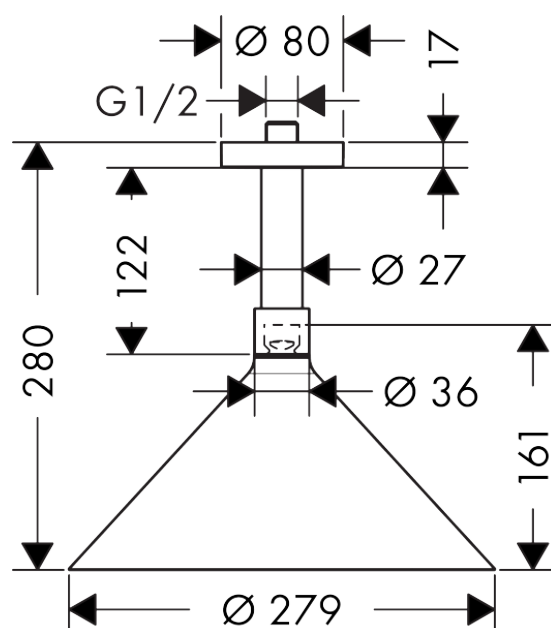
**AXOR Showers/Front**  
**Overhead shower 240 2jet with ceiling connector**  
 Surfaces: **Chrome** Article Number: **26022000**



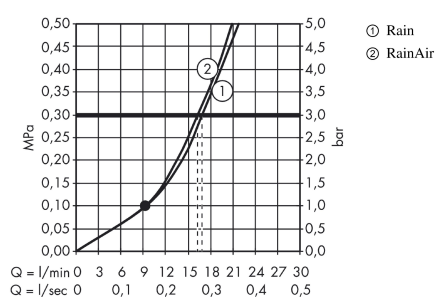
## Product image



## Scale drawing



## Flowchart



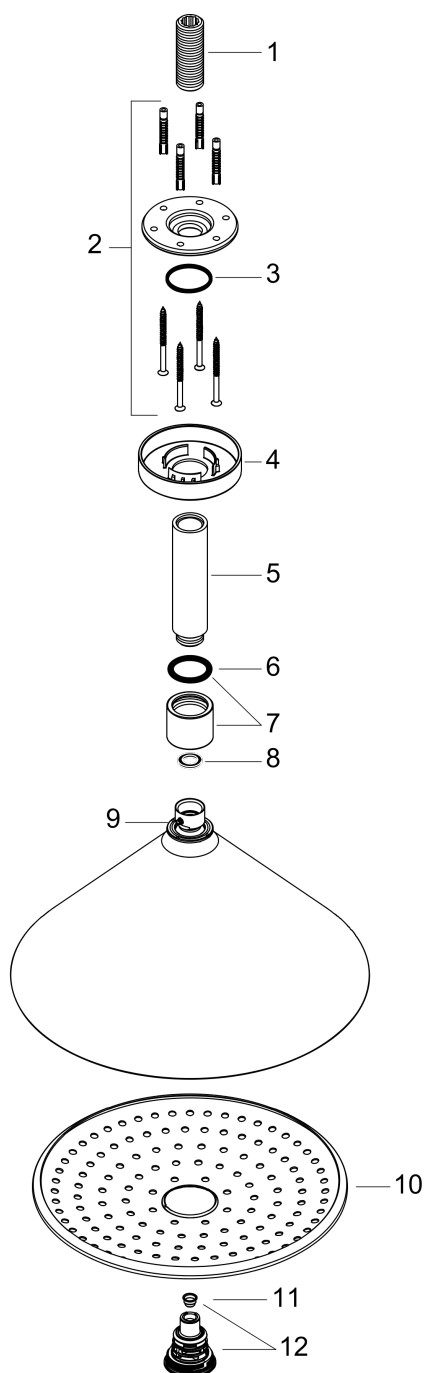
The consumption was measured in combination with the appropriate fittings (thermostat/mixer/in-wall valve) to reflect actual application in practice.

**AXOR Showers/Front**  
**Overhead shower 240 2jet with ceiling connector**  
 Surfaces: **Chrome**    Article Number: **26022000**



## Exploded Drawing

Year of production: >01/13



**AXOR Showers/Front**  
**Overhead shower 240 2jet with ceiling connector**  
 Surfaces: **Chrome**    Article Number: **26022000**



## Spare part list

Year of production: >01/13

Pos.	Description	Article Number	PC	PU
1	connecting thread	95188000	0	1
2	mounting kit	95208000	0	1
3	O-ring 34x2	98383000	0	1
4	escutcheon Ø 80 mm	92122000	0	1
5	shower arm	27479000	0	1
6	O-ring 26x4	92191000	0	1
7	deco-ring	92203000	0	1
8	seal	98058000	0	1
9	hollow set screw M4x6	97767000	0	1
10	spray body	92192000	0	1
11	filter	97735000	0	1
12	selector assy	92387000	0	1