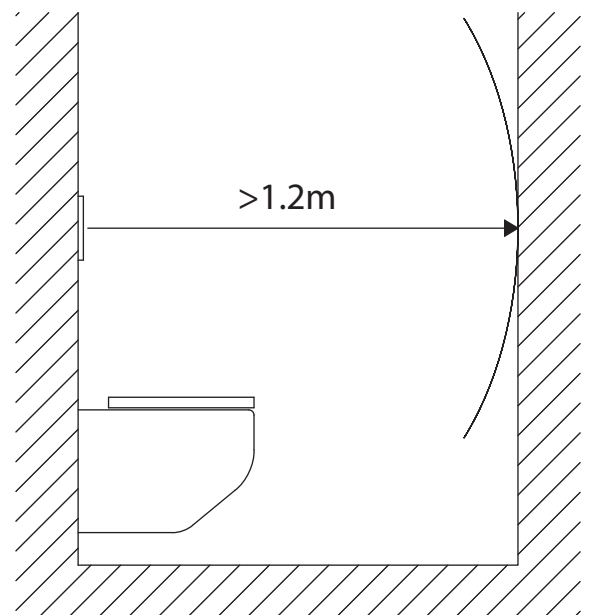
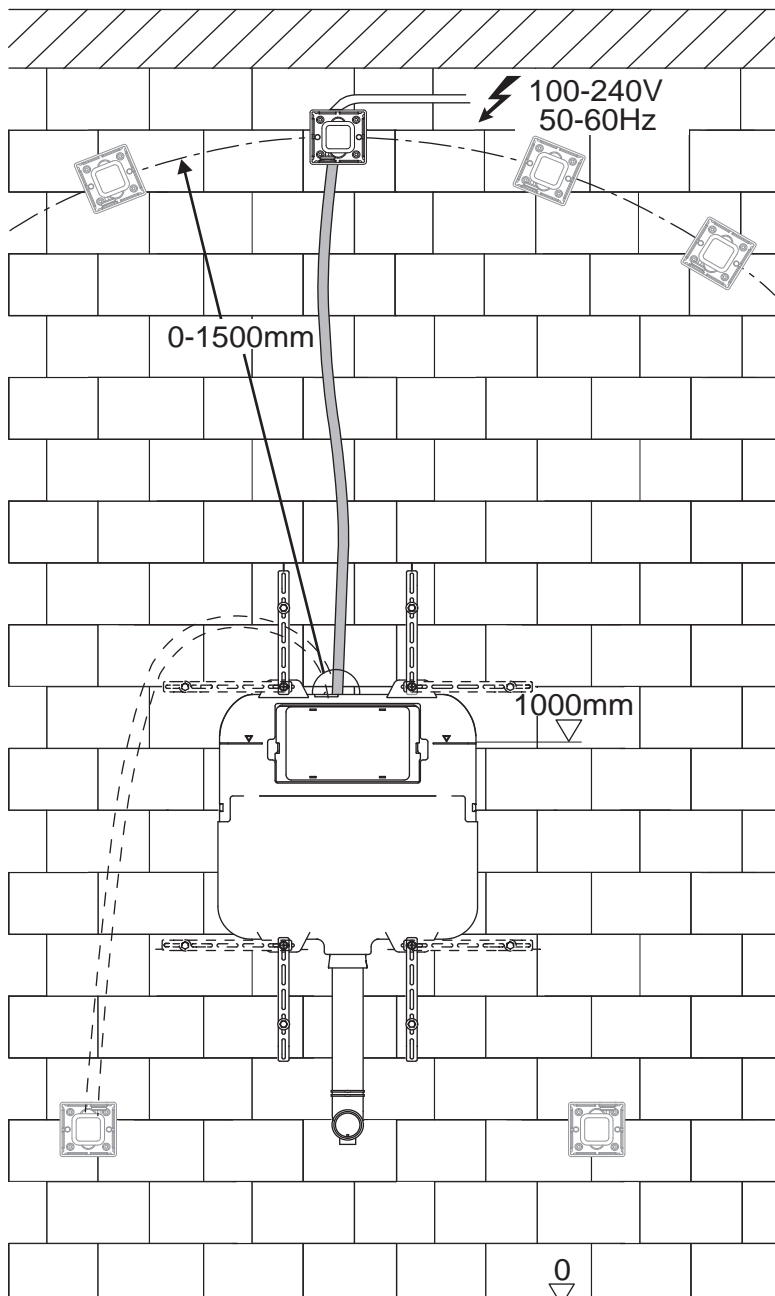
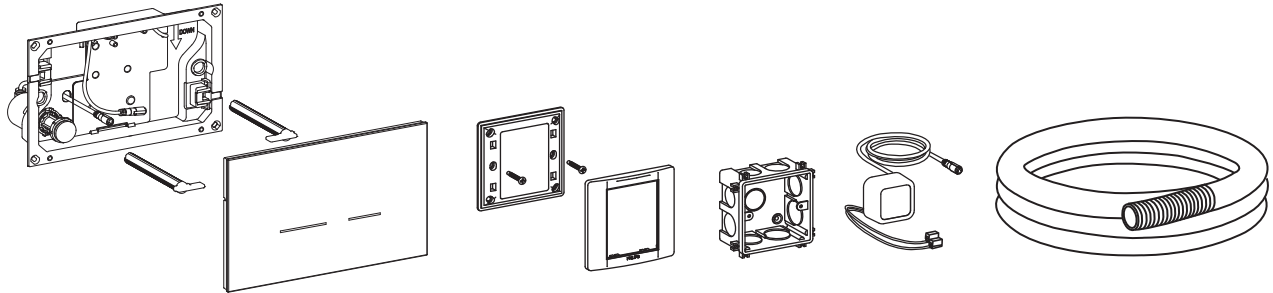


# PA270 Blade Sensor Function Flush Panel

PARISI

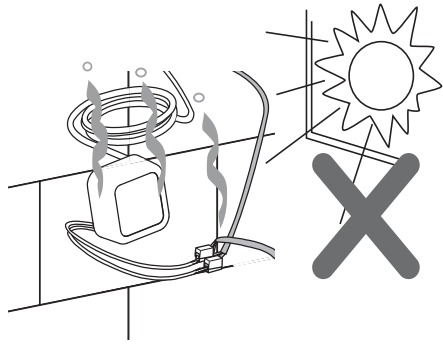
## Installation

NOTE: A housing for the transformer and a cover panel are provided to enable access for maintenance purposes. A 1500mm flexible conduit to run the 6V cable from the transformer to the sensor flush panel is also provided as shown. This may enable the transformer with cover panel to be located in a discrete location.

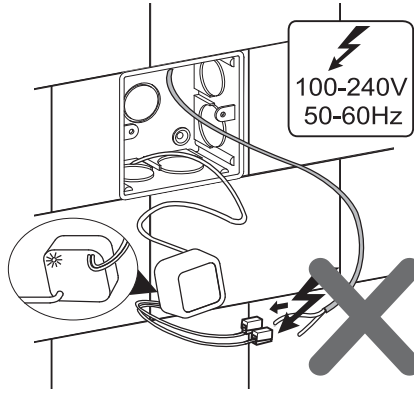


## Safety Instruction - During Installation

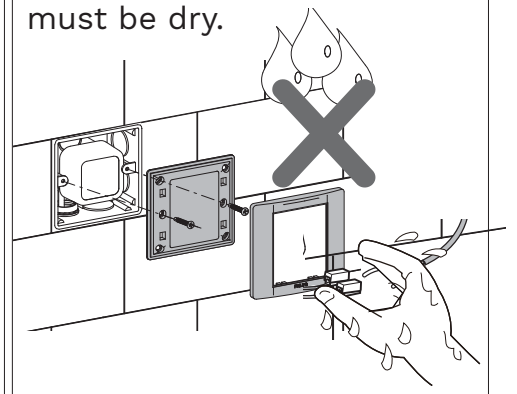
The adaptor must not be exposed to direct sunlight.



Power must be off.

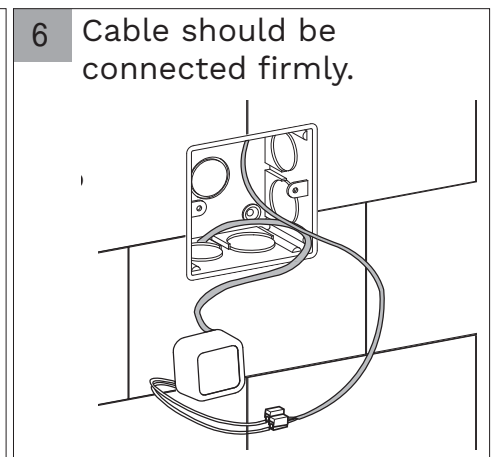
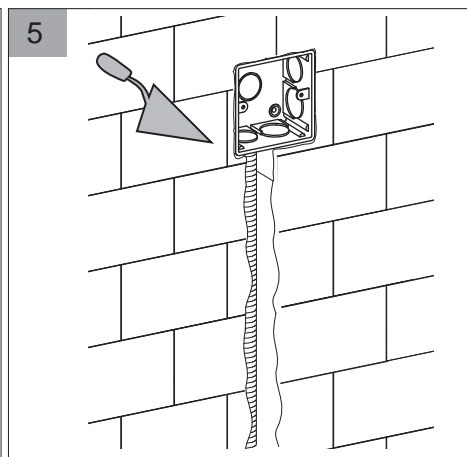
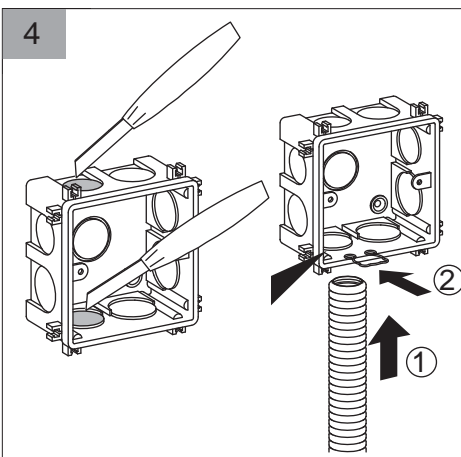
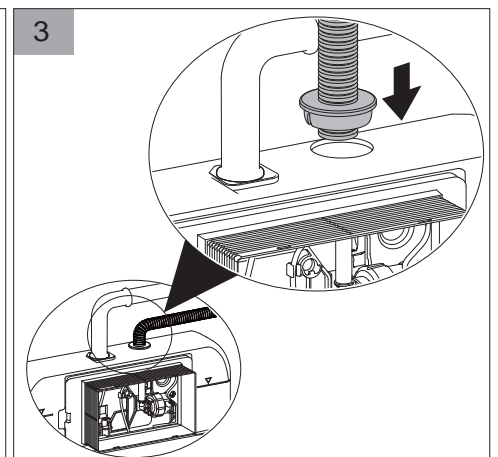
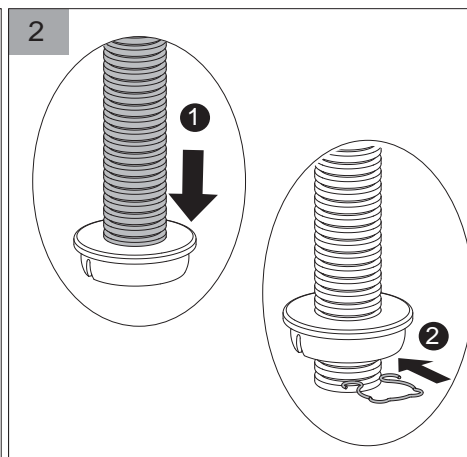
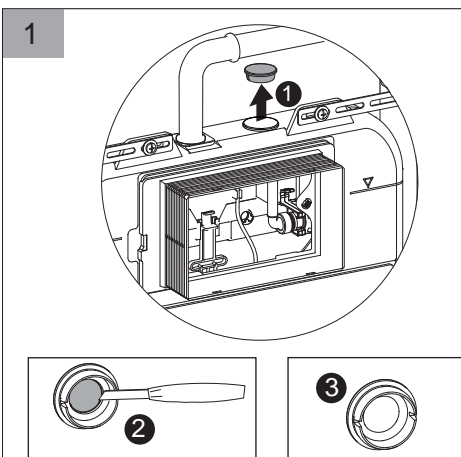


Hand and surroundings must be dry.

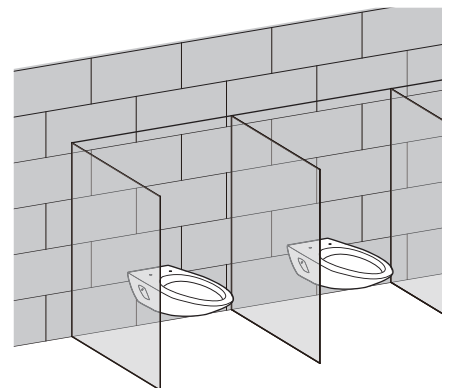
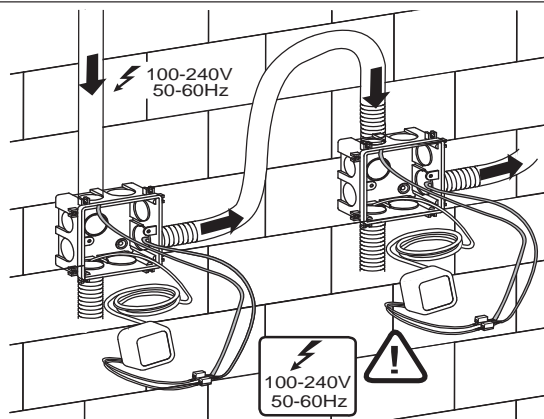


Do not disassemble mechanism.

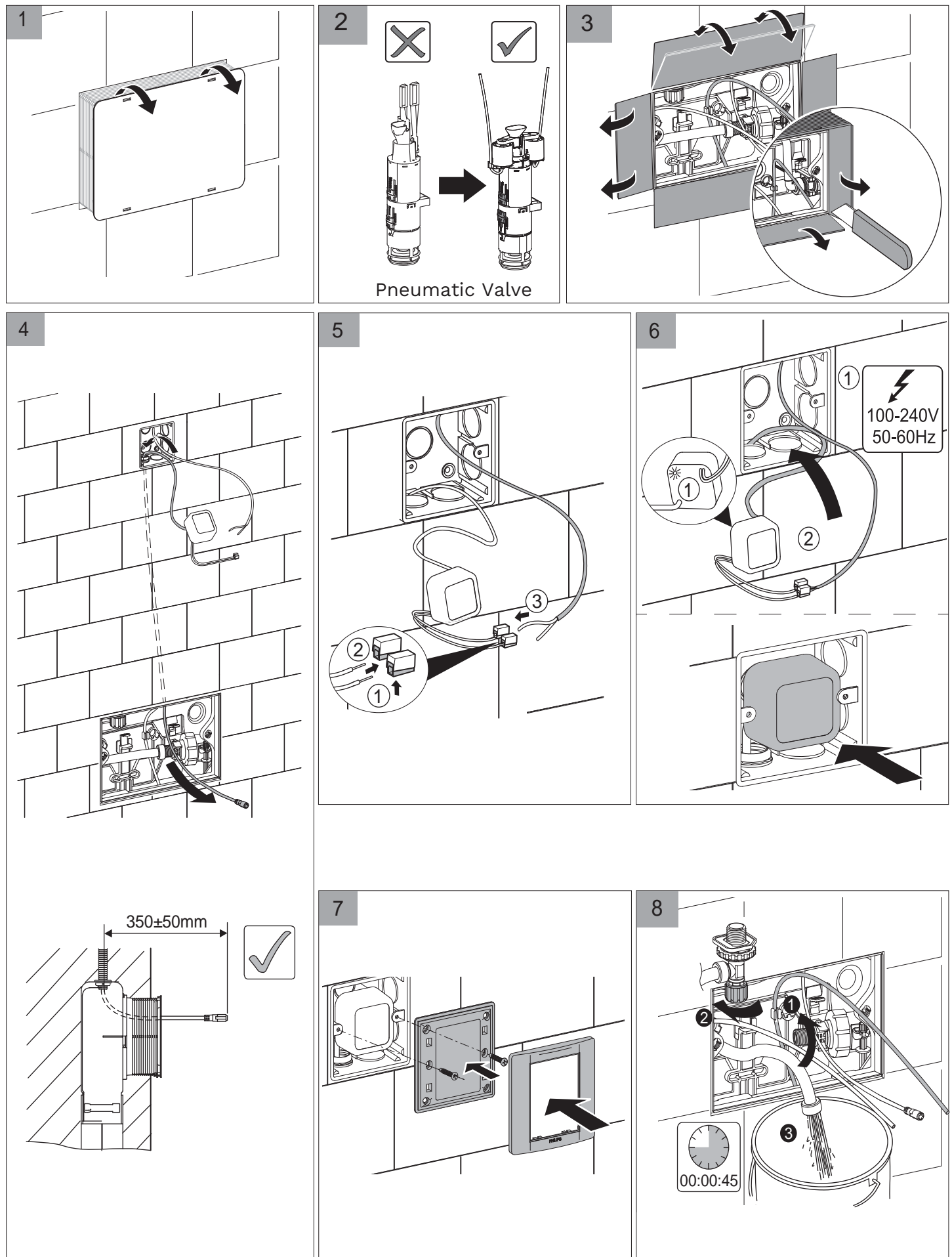
## Installation - Cable and Conduit



Transformers for Multiple Pans



# Installation - Compatible with PARISI Pneumatic Cisterns Only



## Installation - Securing Panel and Connecting to Cistern

