

**AXOR One**  
**Overhead shower 280 2jet with shower arm**  
 Finish: **Chrome** Article Number: **48492000**



### product features

- consists of: overhead shower, shower arm
- shower head size: 280 mm
- spray type: PowderRain, Rain
- material spray disc: metal
- shower arm length 389 mm
- maximum flow rate at 3 bar: 12 l/min
- flow rate PowderRain spray (at 3 bar): 7,2 l/min
- flow rate Rain spray (at 3 bar): 12 l/min
- function from: 6,7 l/min
- minimum flow pressure: 1,5 bar
- connection of overhead shower: bayonet fixation
- overhead shower removable for cleaning
- installation: wall
- connection dimension: DN15
- connection type: basic set
- suitable for continuous flow water heaters

### Technology



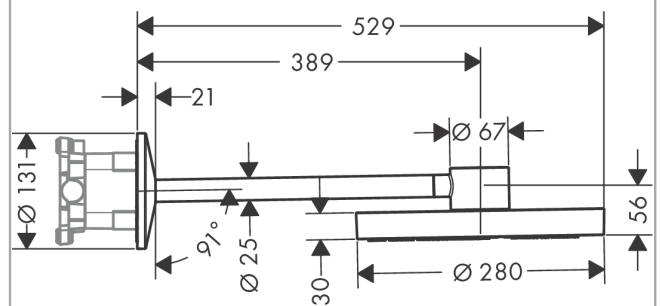
### Design awards



### Product image



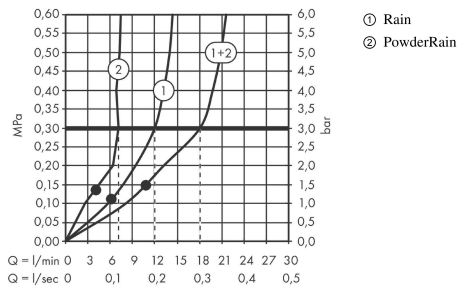
### Scale drawing



**AXOR One**  
**Overhead shower 280 2jet with shower arm**  
 Finish: **Chrome**    Article Number: **48492000**



## Flowchart



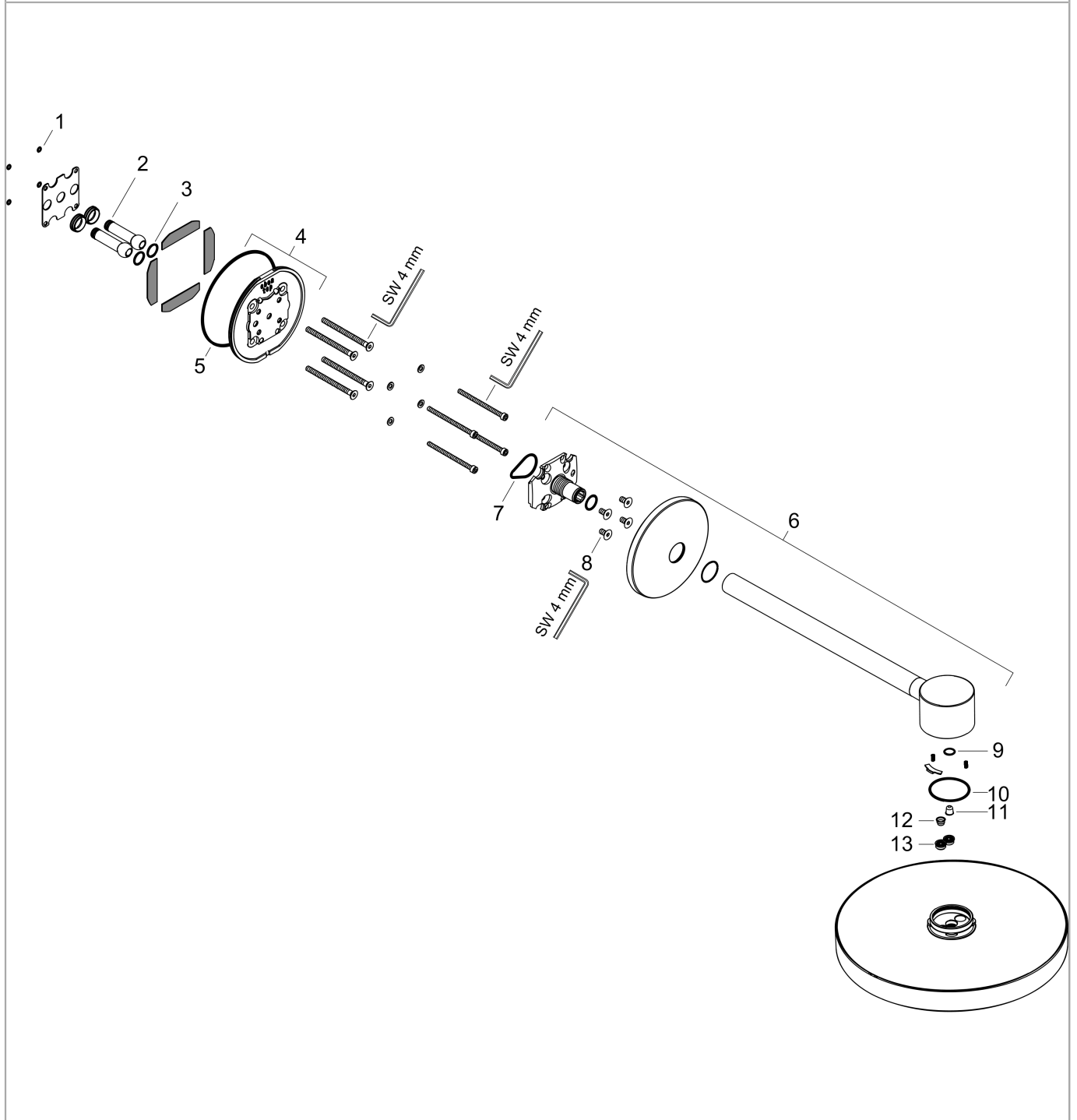
The consumption was measured in combination with the appropriate fittings (thermostat/mixer/in-wall valve) to reflect actual application in practice.

**AXOR One**  
**Overhead shower 280 2jet with shower arm**  
Finish: **Chrome** Article Number: **48492000**



## Exploded Drawing

Year of production: >04/21



**AXOR One**  
**Overhead shower 280 2jet with shower arm**  
 Finish: **Chrome** Article Number: **48492000**



## Spare part list

Year of production: >04/21

Pos.		Article Number	PC	PU
1	O-ring 4x1,5	93463000	1	1
2	O-ring 10x1,5	98123000	1	1
3	O-ring 14x2	98129000	1	1
4	wall flange	93462000	15	1
5	O-ring 120x2,5	93399000	2	1
6	shower arm	93966000	21	1
7	O-ring 33x2,5	92907000	1	1
8	screw	92137000	2	1
9	O-ring 11x1,5	98385000	1	1
10	O-ring 45x2,5	98432000	1	1
11	filter	93967000	1	1
12	filter	97735000	1	1
13	flow limiter (8 l/min)	13968000	3	1