

AXOR Citterio

Single lever basin mixer for concealed installation with spout 165 mm and plate wall-mounted

Surfaces: **Chrome** Article Number: **39112000**



Description

product features

- projection 160 mm
- normal spray
- flow rate at 3 bar: 5 l/min
- joystick ceramic cartridge
- suitable for continuous flow water heaters
- non-closing flush grated valve
- connection dimension: DN15
- handle can be positioned on the right or left, depends on the basic set installation

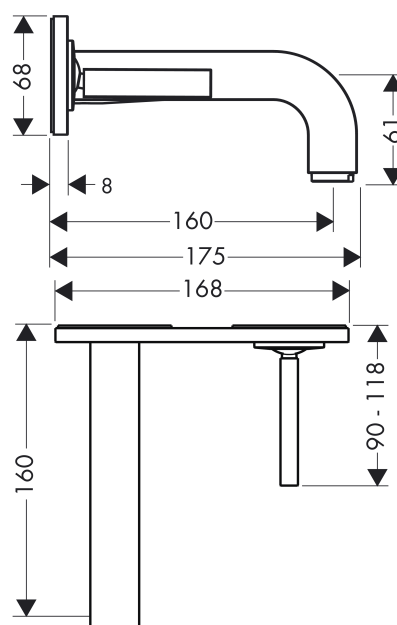
Technology



Product image



Scale drawing



AXOR Citterio

Single lever basin mixer for concealed installation with spout 165 mm and plate wall-mounted

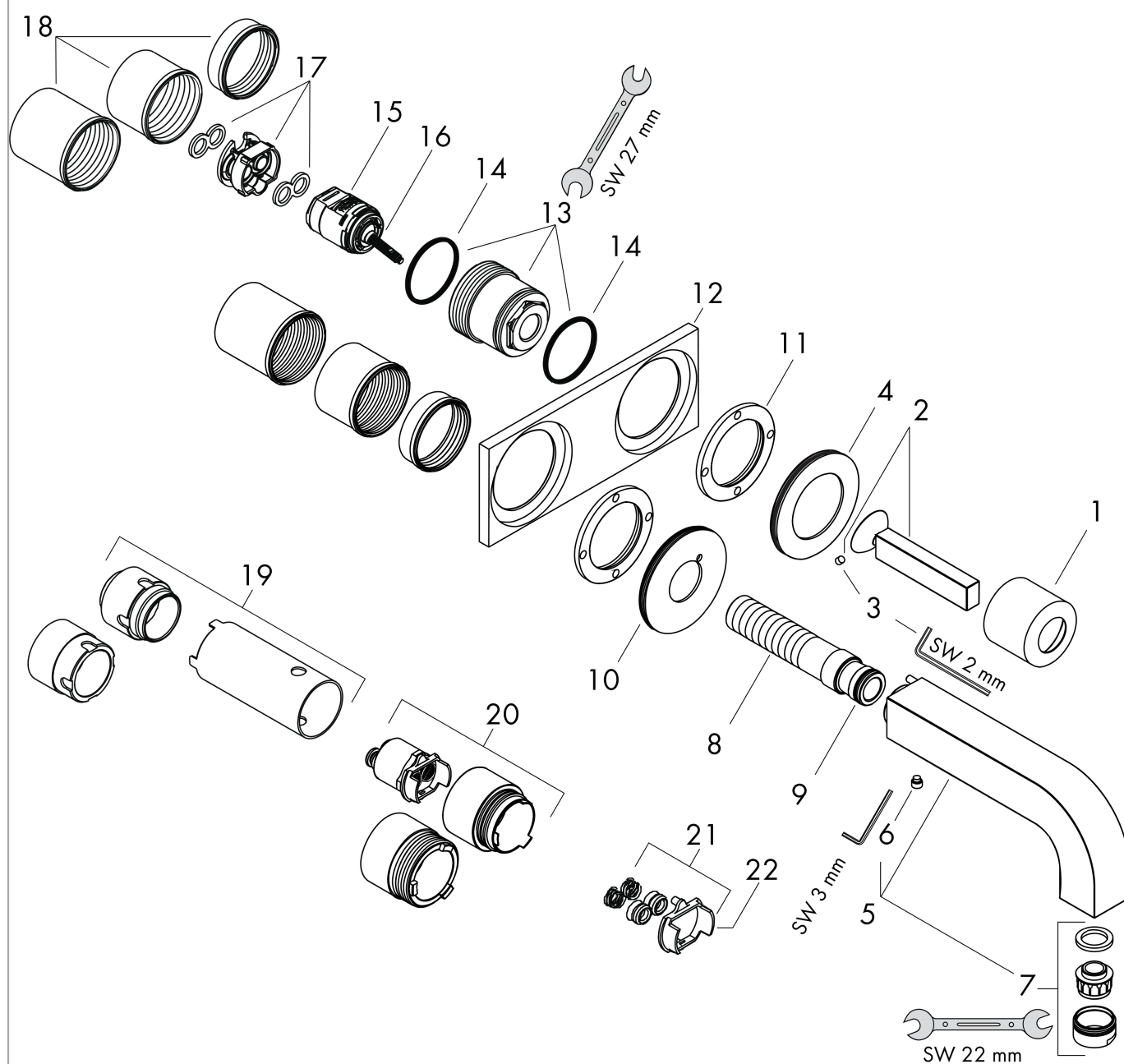
Surfaces: **Chrome**

Article Number: **39112000**



Exploded Drawing

Year of production: >01/10



AXOR Citterio

Single lever basin mixer for concealed installation with spout 165 mm and plate wall-mounted

Surfaces: **Chrome** Article Number: **39112000**



Spare part list

Year of production: >01/10

Pos.	Description	Article Number	PC	PU
1	flange	96908000	0	1
2	handle	39092000	0	1
3	hollow set screw M4x6	97767000	0	1
4	escutcheon for handle	96912000	0	1
5	spout 160 mm	97238000	0	1
6	hollow set screw M6x6	97660000	0	1
7	aerator M24x1 (5 l/min)	13185000	0	1
8	connecting thread G½	97228000	0	1
9	O-ring 16x2,5	98134000	0	1
10	escutcheon for spout	97695000	0	1
11	nut	97601000	0	1
12	escutcheon	96914000	0	1
13	nut	95645000	0	1
14	O-ring 34x2	98383000	0	1
15	cartridge, assy	96339000	0	1
16	O-ring 21,95x1,78	95169000	0	1
17	adapter for cartridge	95644000	0	1
18	fixing set	97971000	0	1
19	extension set 25 mm for 13622180	31971000	0	1
20	extension set for 38111180	38982000	0	1
21	conversion kit	95643000	0	1
22	adapter for cartridge	97280000	0	1
a	pop up waste	50001000	0	1
b	base body	13622180	0	1
c	concealed item	38111180	0	1
d	service tool for disassembling the handle	92124000	0	1