

TECHNICAL CHARACTERISTICS OF THE CERAMIC DISCS:

Material:	AL₂O₃
Surface roughness Ra:	0.2 μm
Contact surface area:	50-80%

TECHNICAL CHARACTERISTICS OF THE CARTRIDGE:

Opening angle:	25°
Mixing angle:	90°
Max temperature:	90°C/194°F

Recommended tightening torque:

12-13 Nm / 106-115 lbf·in

Pressure test:

Pneumatic:	6 bar / 87 psi
Hydraulic:	35 bar / 500 psi

Flow rate:

(3 bar / 45 psi, test faucet, EN 817)

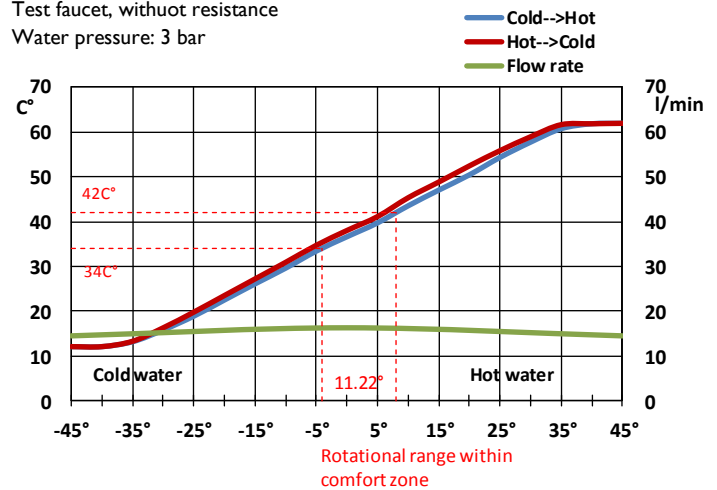
16.3 l/min / 4.3 gpm without resistance

Endurance test:

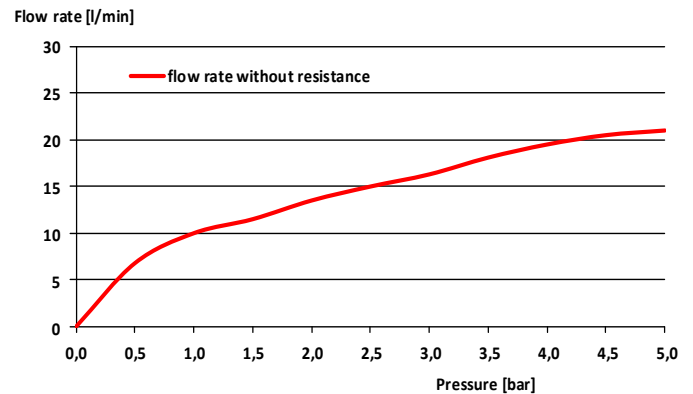
EN 817	70 000 cycles
ASME A 112.18.1	500 000 cycles

FLOW RATE & HYSTERESIS CURVES

Test faucet, without resistance
Water pressure: 3 bar



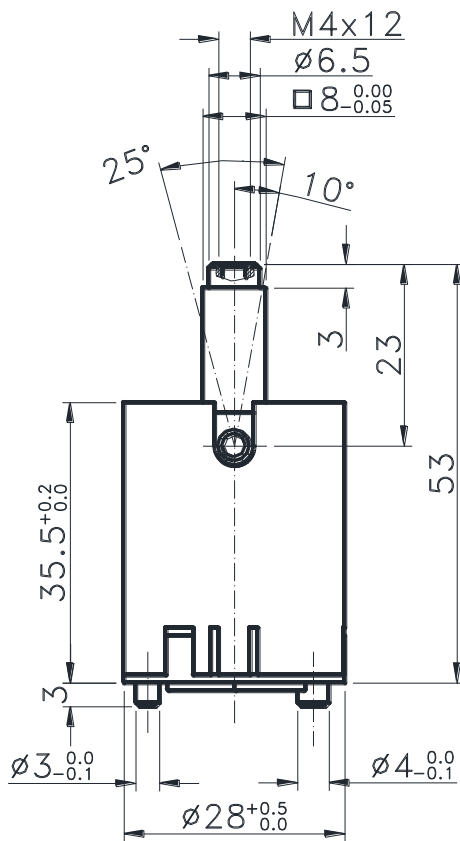
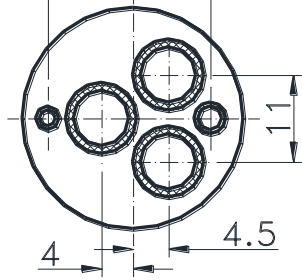
FLOW RATE CURVE



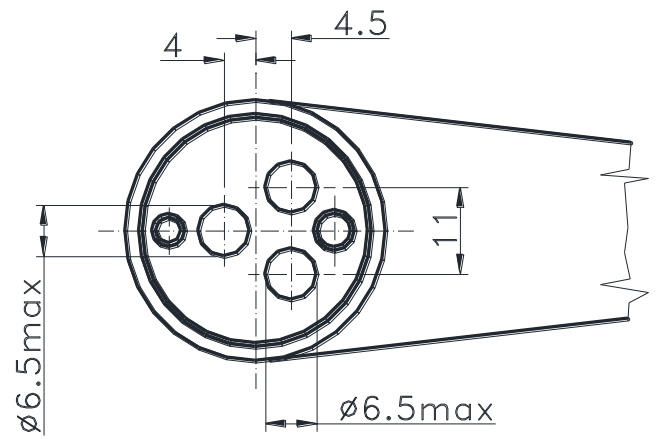
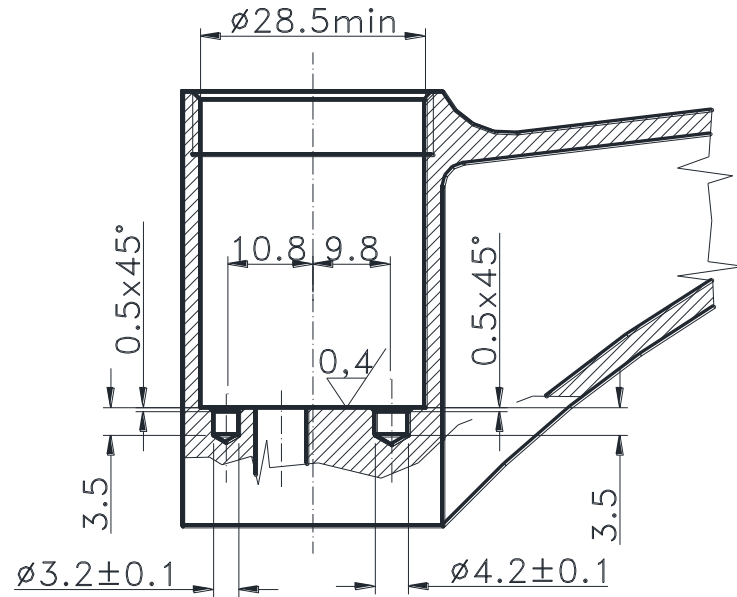
K-28

CARTRIDGE

10.8±0.1 9.8±0.1



Cartridge



Body