

## Tao 1350 Wall Mounted Cabinet with Multi-Layered Top

**Product Code: TA-1350-XX**

(See below for colour codes)

The sleek Tao 1350 Wall Mounted Cabinet requires both craftsmanship and new generation materials. The cabinetry and benchtop combine to form a T design. The push-to-open function ensures easy and efficient operation of the drawers.



Polaris



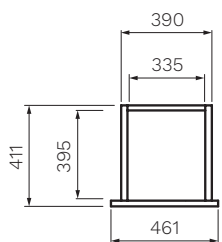
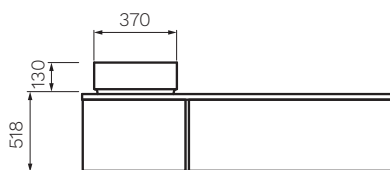
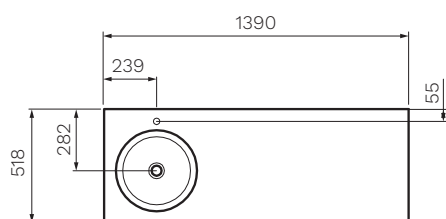
Noir



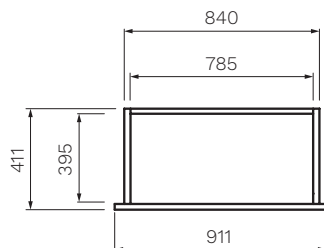
Gris  
Moyen



Betulla



LEFT DRAWER



RIGHT DRAWER



**Colour & Finish** — Polaris/Blanc Glacé (PO), Noir (NR), Gris Moyen/Blanc Glacé (GM), Betulla/Blanc Glacé (NO)

**Material** — Legno Veneer Multi-layered Birchwood Cabinetry, Polaris Benchtop

**Dimensions** — 1390 x 518 x 518mm

**Doors / Drawers** — 2 Drawers

**Tap Holes** — 0

**Overflow** — No

**Basin** — Bowl Optional Extra. Refer to Stocco Tao Basin

**Waste Outlet** — 32mm Universal Plug & Waste to be ordered separately (TA3240 or TA4032)

**Features** — Push-to-open Function Drawers with Glass Sides

**Internal** — Anthracite Finish

**Warranty** — 10 Years (Conditions Apply)

STOCCO



Note: Dimensions are in millimetres and nominal. They can vary according to material and manufacturing tolerances. Exact dimensions should be determined by measuring actual product. PARISI reserves the right to vary specifications without notice.

April 2019